

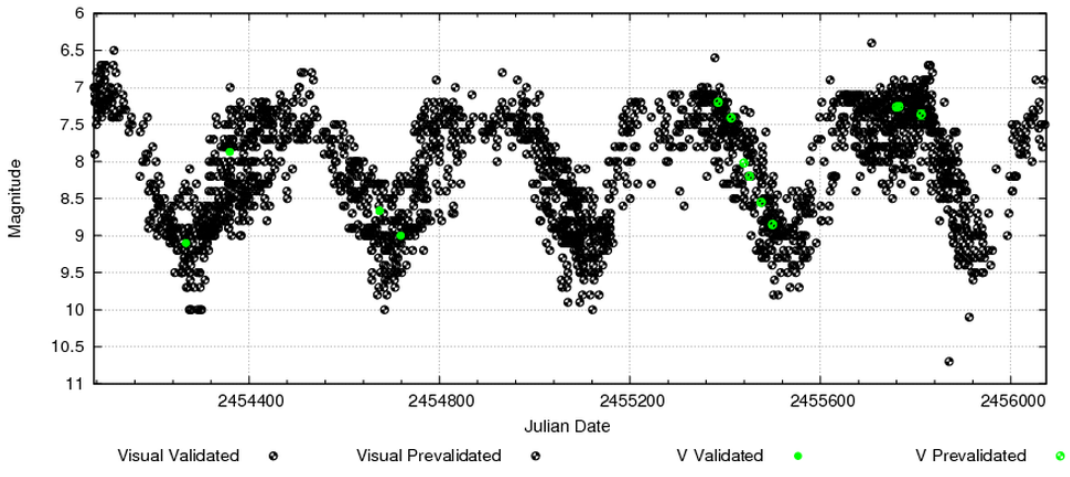
CHOICE- Variable Star Types and Light Curves VII- Final Exam

Name the type of variable star associated with each light curve. Be as specific as you can. For example, if it is an eclipsing binary- EA, EB or EW. If it is a dwarf nova- UG, UGSS, UGSU, UGWZ or UGZ and if it is a LPV, you have to narrow it down. LPV is not sufficiently specific.

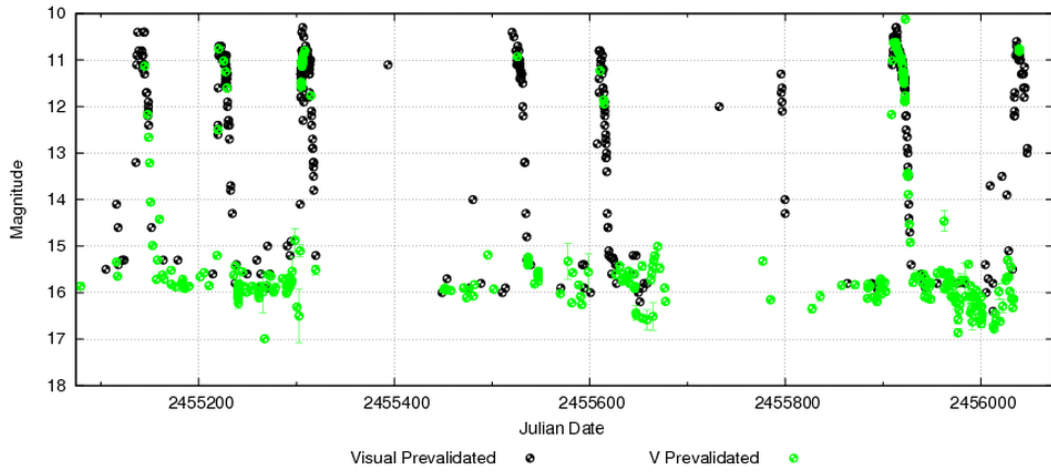
Clues are in the amplitude, period, magnitude range, overall shape of the curve, time span covered in the light curve plot. (Don't bother trying to use the ASAS designations to get types from their catalog or you will get them all wrong.)

Send an email to ptsouth97@gmail.com with the numbers and types listed 1-20 in the body or as a text attachment. Each question is worth 5 points. You need 75 to pass, or 15 out of 20.

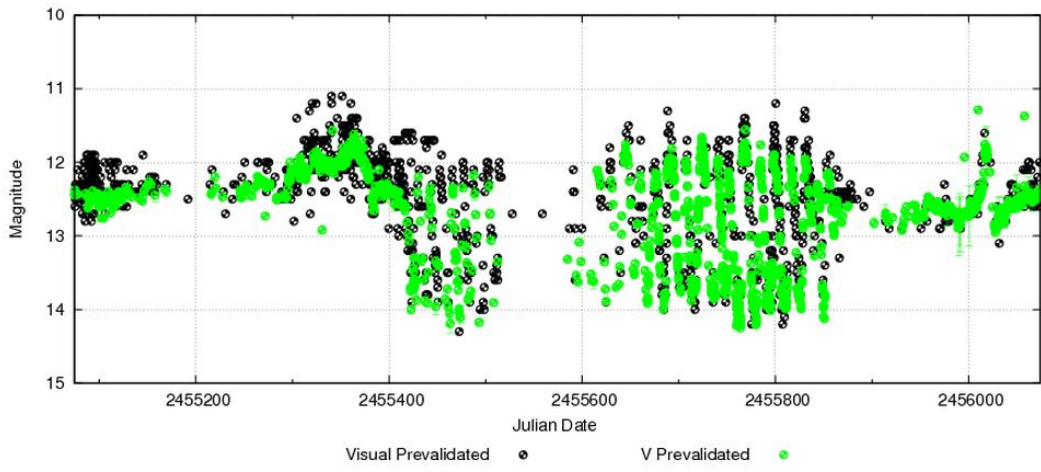
1.



2.

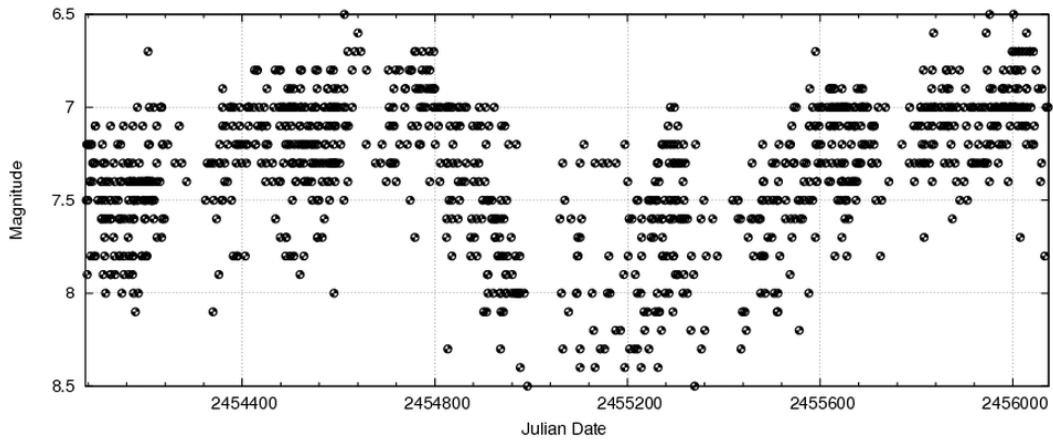


3.

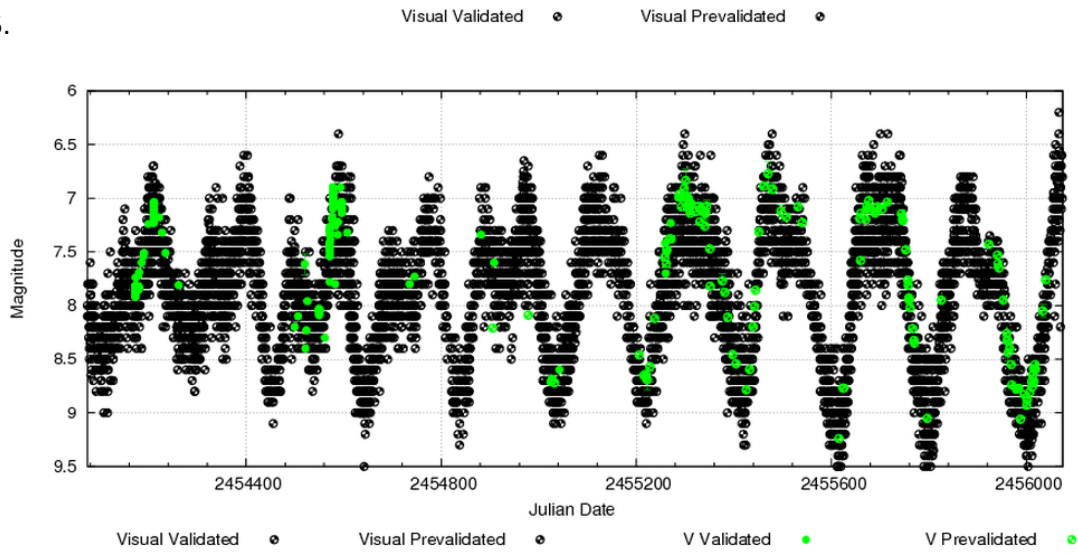


3.

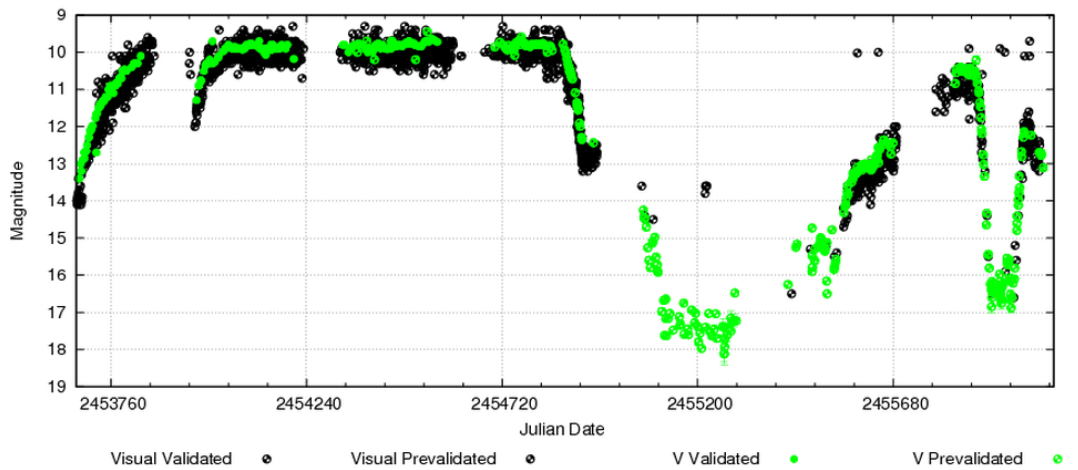
4.



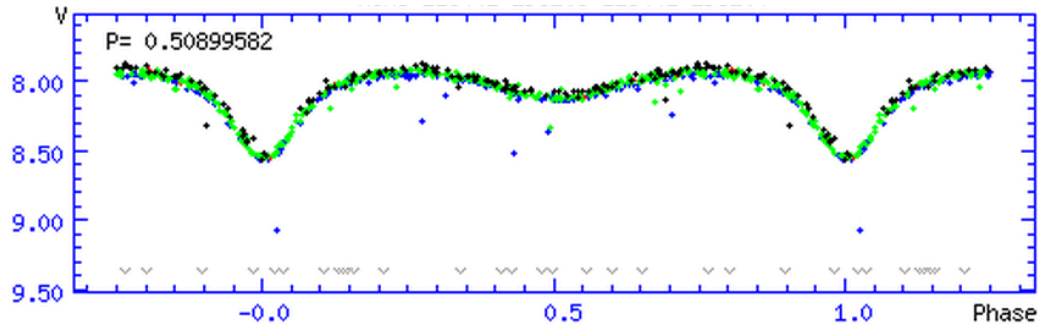
5.



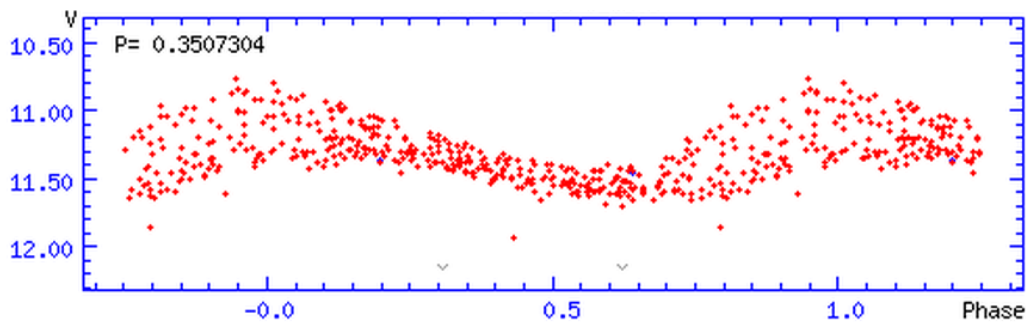
6.



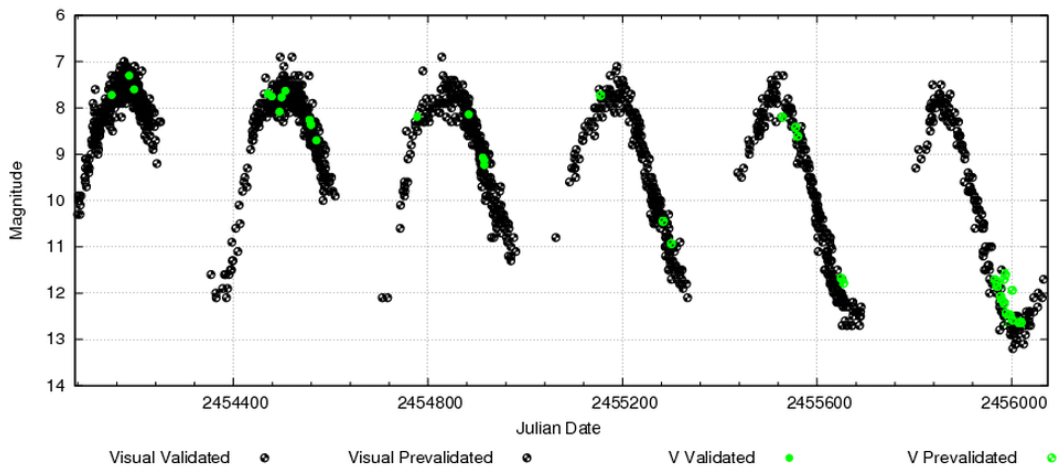
7.



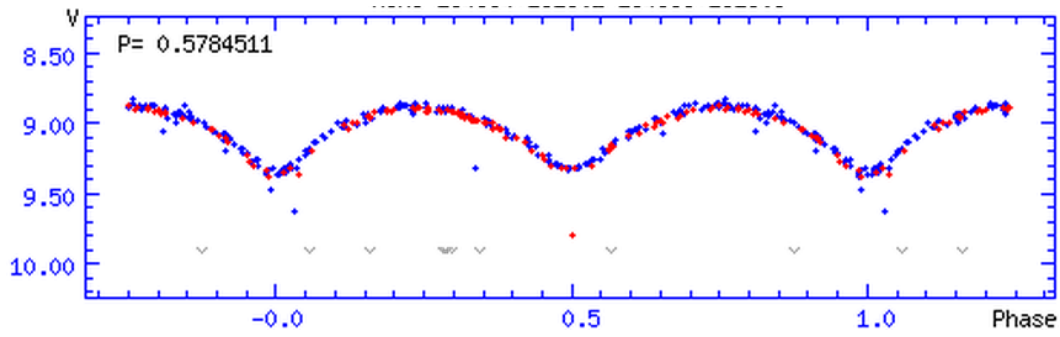
8.



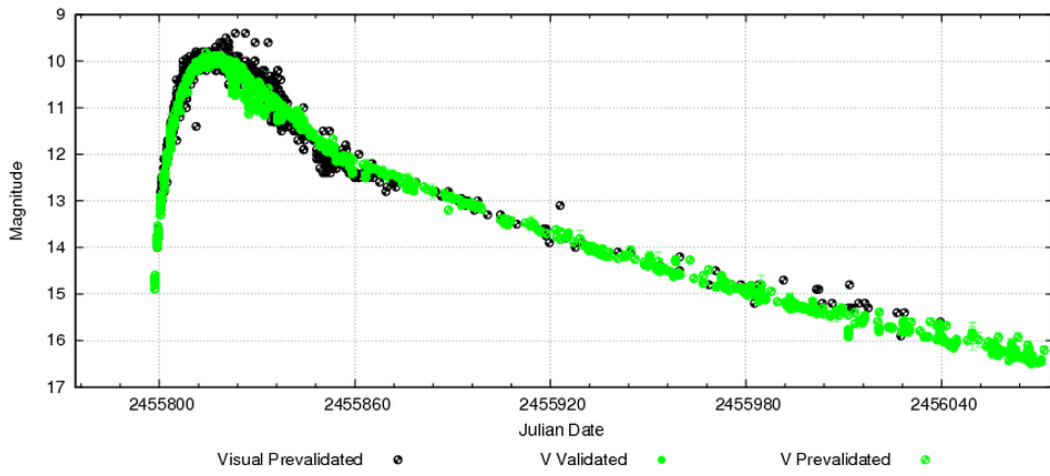
9.



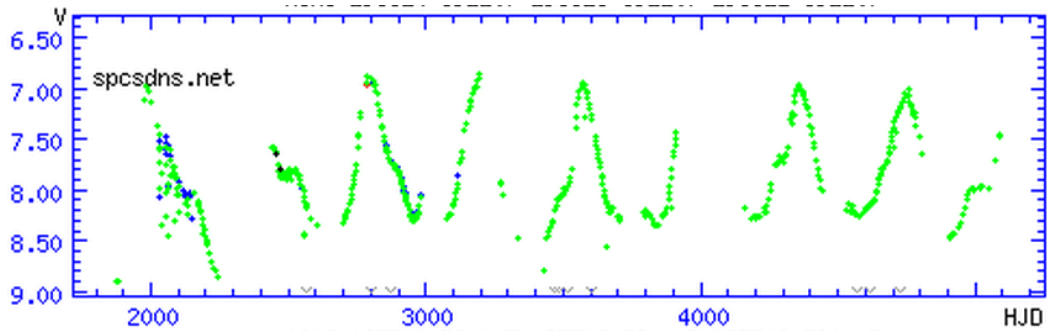
10.



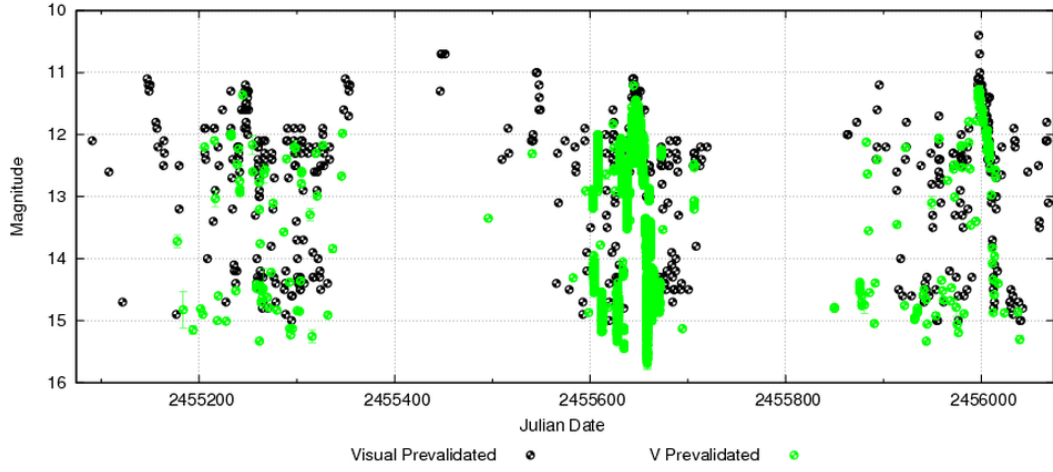
11.



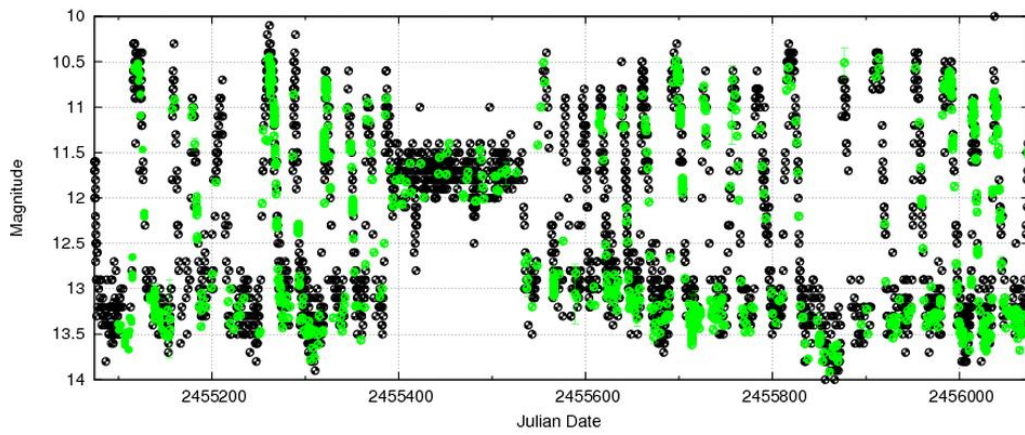
12.



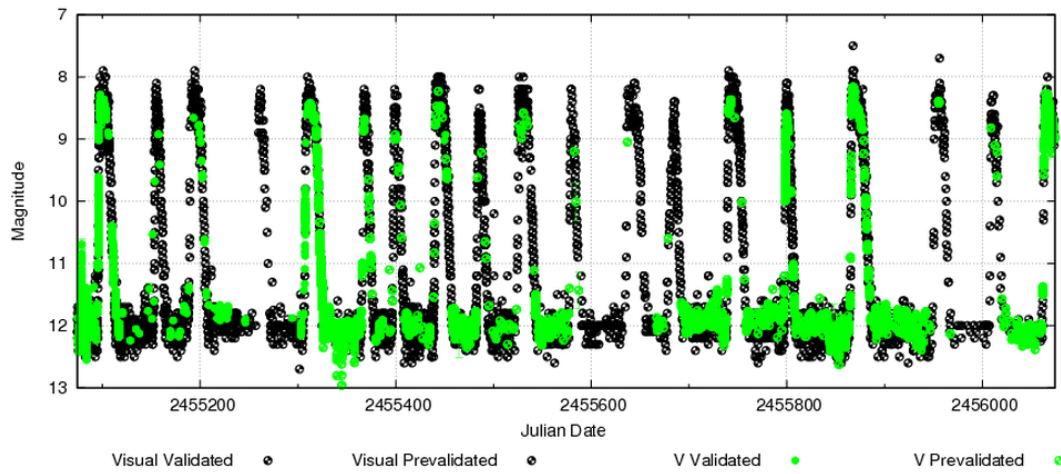
13.



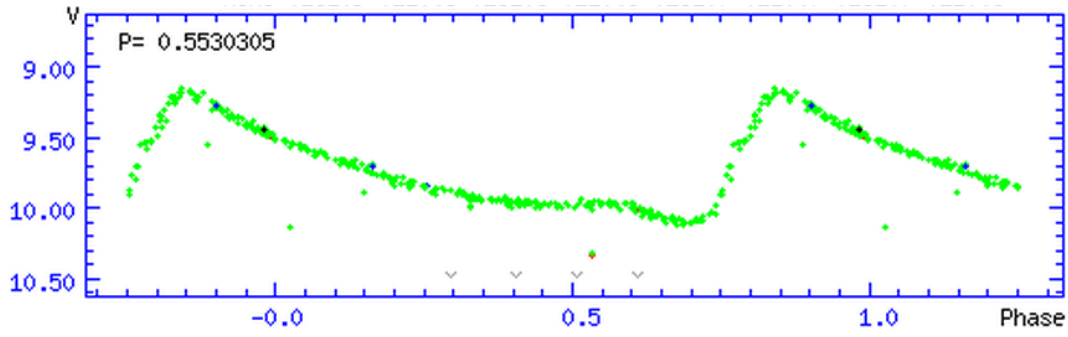
14.



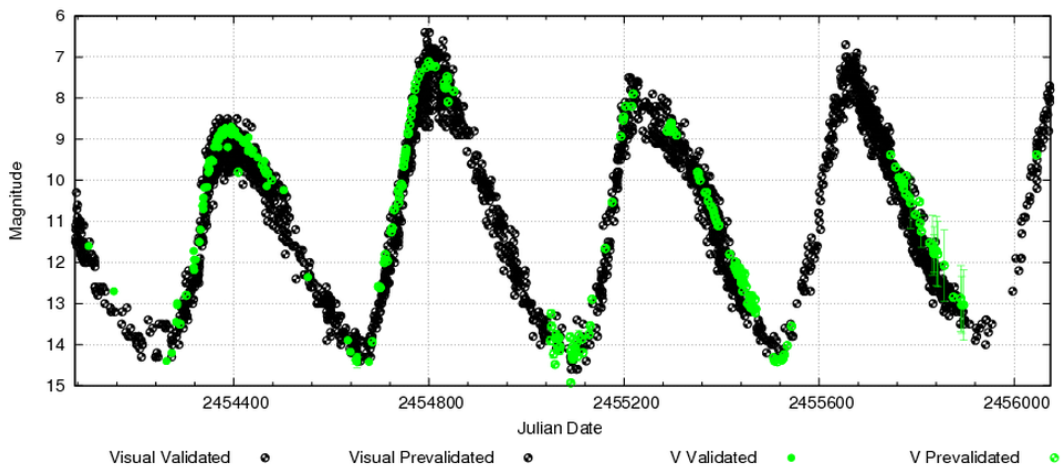
15.



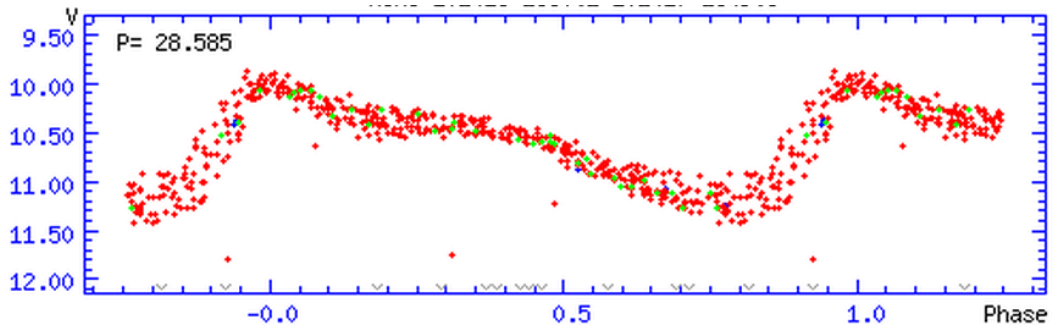
16.



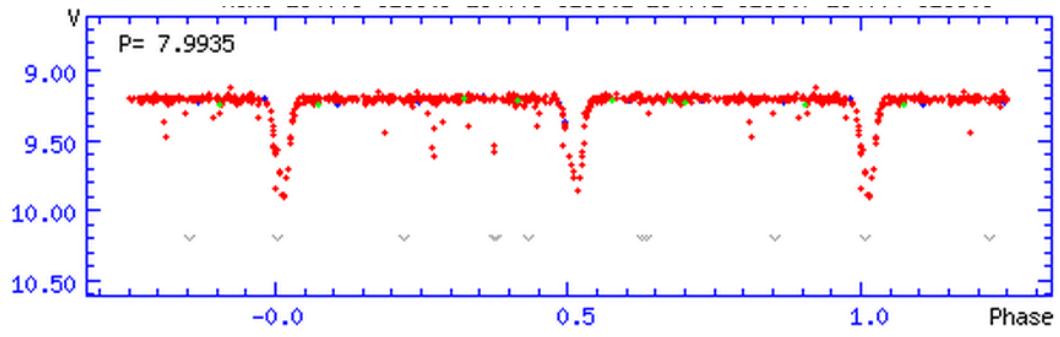
17.



18.



19.



20.

