

✓

15440-5802-

15 46

25

-58 07.5-

81

860

(Var)

3119

①

Ⓟ

→

Jun²

12.8 143^m

10.63 + 0.860 10 Aug

10.58 + 0.850 9 Sept

10.48 + 0.87 21 Aug

10.56: + 0.860
12.83 + 0.54 18 Aug 24

My unpaired
July

①

Ⓟ

12.64 + 0.622 18 Aug 24

1000

✓ 137-60 15 53 00 +14 00

139 15.9 m

3/28



GI37-60

1351 +1224 16 June 74

1351

168-14 ✓ 15 50 35 +29 35

3124 12.3-13.6 12-m



1122 +1165 15 Jan 79

16-11

✓ 15

48 35

+100 21.5

12.1 13.2 m

31223



11.89 + 1063 20 June 79

✓
15554-2457

16 01 10 -25 03

3147

12.6 141 m

①

11.86 + 1.140 21 July 79

15067-2217 ✓ 15 58 35 -22 22

314)

13.6 15.5 mm

h.

⊙

13.12 40.93521 July 74

137-71 ✓ 15 57 05 +20 39.5

3136

132 18.4 mm



1318 +1.171 16 Jan 79

168-32 ✓ 16 06 25 +26 53.5

12.3 14.0 m

3 315



G168-32

12-04 +1012 20/4/79

LPT 1246

16 04 12

-61 26

$14.5 \overline{) 0.65}$

1409 +1405 +11224mg

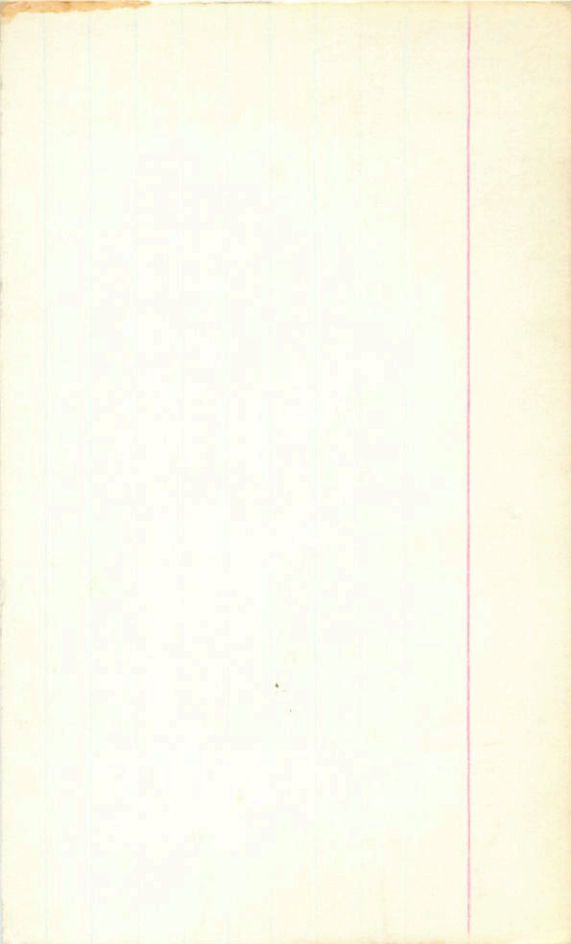
13.28

+0.69 23mg

$13.27 \overline{) 0.6525771}$

$13.28 \overline{) 0.67}$

ND



16-24 ✓

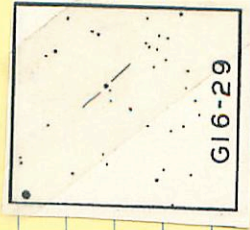
16 05 25 + 8 26.4

How old
we could be

10.8 12.8 m

3156

10.52 + 0.828 20.29



520 2250

✓ 16113-2823 16 13 10 -28 27.5

14.0 146 g

316 g

(F)

11.56 + 1.187 2149.74

11.67 + 1.172 1099.80

11.58 + 1.180

16 080 - 2001 16 11 05 - 20 06

.443 2050

13.9 15.2 hr-m

3167

dr

12.16 11.302 20 July 79

16088-4040 16 10 80 -40 45.5 - 145 -

~~1001~~ (3165) ⊕

1150 10850 05.11

2104852

16223-2149

16

24 00

-21

53.5

✓

9.7 11.0 h.m

3191

1/20

555

air

947 + 0.86 15 Jan 79

567
meters

211 hms - 344 IT C

16178-1732 16 19 30 -17 36

✓

3183

11.0 12.4 10⁴

⑥

10.67 40.507 15 June 24

11.0 12.4 10⁴
3183

3183

not 6

16152 +0144

161645

+0140

175

154

✓

3179

○

..

13.56 +1229 21/1/79

16270-4759 16 29 00 -42 03

① ✓ 144 157 h-m

3206

13.53 40.56521794

✓

16 289 -17 16 16 25 40 -17 20.5

3197

12.4 15.5 m

12.58

62 Profile 12414

Very ✓ 16 25 15 +02 13.5 10%

" { 10.07 + 96 + 71
8.6 } 17.0 18.5

3194



(A) 9.58 +0.4212 Aug 79

✓
16208-5329 16 33 10 53 33

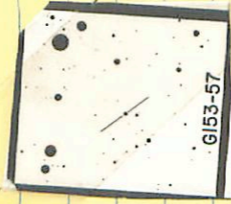
12.1 13.6 m

3216

17 10.78 +10.12 20.9079

153-57 ✓ 16 29 05 -14 32.5

3205 13.1 14.5 hr



OR 10.58 +1.08021479

✓ 16323-2711 16 34 10 -27 15.5

13.3 15.0 m

Slep

①

12.63 +1308 18 Aug 79

✓ 13843

176 3505

+08

51

13.3 14.5 m

3281



GI38-42,43

12.24 +1266 21 Aug 74