

✓✓

Abol(RI) ✓

9.36 +37-22

+2603578 19 31 31 +26 20

$$\begin{array}{r} 9.31 \\ 9.40 \\ \hline 9.31 \\ \hline \end{array}$$

$$\begin{array}{r} +0.155 \\ +0.175 \\ \hline +0.165 \end{array}$$

9.37 -394 +763-450 25 Aug 25
 9.37 -392 +773-435 28 Aug 25

$$\begin{array}{r} 9.37 \\ \hline -394 \\ \hline \end{array}$$

$$\begin{array}{r} +763 \\ \hline -442 \\ \hline -489 \end{array}$$

9.37 +373 +059-+394
 419

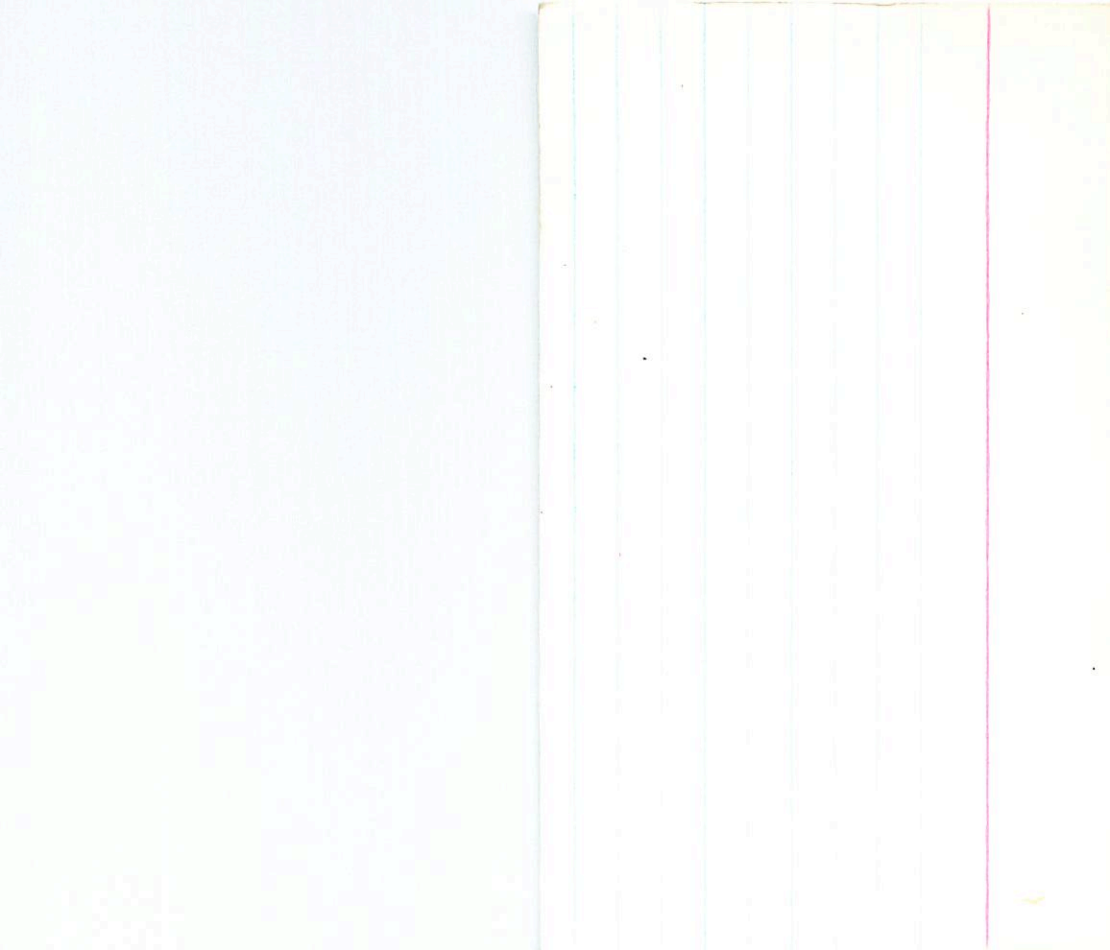
$\delta m = 0$
 7470 19 38 19 -23 28.5 624 AD

$$\begin{array}{r} 6.33 \\ 6.32 \\ \hline 6.32 \end{array} \begin{array}{r} -6.57 \\ -6.61 \\ \hline -6.60 \end{array} \begin{array}{r} +9.82 \\ +9.02 \\ \hline +9.92 \end{array} \begin{array}{r} +0.68 \\ +0.85 \\ \hline +1.14 \end{array}$$

$$\begin{array}{r} 2364 \\ 2376 \\ \hline 2390 \end{array} \begin{array}{r} 14 \text{ Aug } 75 \\ 28 \text{ Aug } 75 \end{array}$$

~~6.32~~ 1037 157 92.5 2.905 ②

~~1.00~~
~~1.66~~
~~1.00~~



Am

7532 19 46 88 -13 45 6.12.20

6.09 -558 950 -60 2.345 21A7274

6.02 -616 +993 +028 2.354 2470078

246

^{*}6.02 077 264 861 2.977

6.06-6.07 992 -053 2350(2)

$$\begin{array}{r}
 x \\
 21 \\
 2 \\
 \hline
 41 \\
 42 \\
 \hline
 83
 \end{array}$$

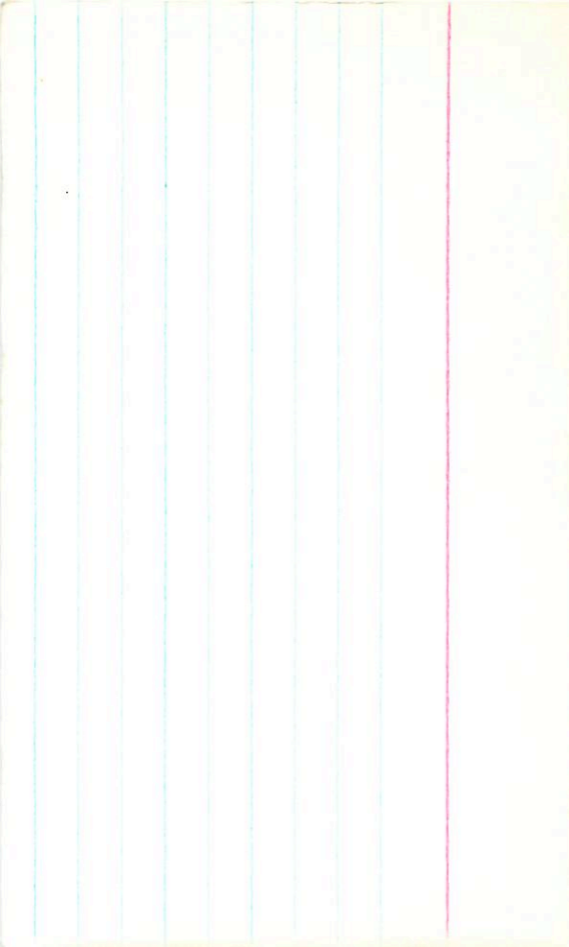
7491 15 41 57 -37 35.5 6.16 B5

$$\begin{array}{r}
 6.14 - 6.22 + 7.58 - 0.96 \\
 \hline
 6.11 - 6.33 + 7.89 - 1.26 \\
 \hline
 6.14 - 6.14 + 7.44 - 0.89 \\
 \hline
 6.14 - 6.29 + 7.64 - 1.00
 \end{array}$$

$$\begin{array}{r}
 2.232 \text{ 18 Aug 75} \\
 2.224 \text{ 14 Aug 75} \\
 \hline
 2.228
 \end{array}$$

~~6.15 + 6.69 0.43 7.26 2.724~~ (3)

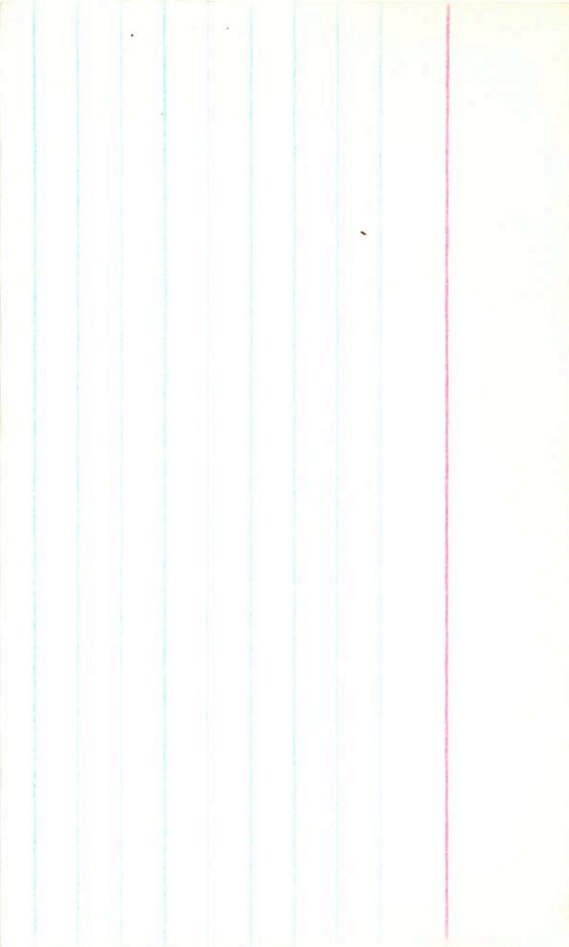
6.9



7567 19 44 26 -31 58.5 5.56 BF

5.50 -641 +797 -203 2.214 17 Aug 75
5.51 -618 +796 -178 2.216 18.
5.50 -630 +791 -190 2.215
5.50 ~~462~~ ~~066~~ ~~131~~ 2.708

-1.2



Adv. P.I. ✓
~~Site Study~~

188510 ✓

14 53 58

+10 40

G-143-17

v

11 8.23 + 58 + 11

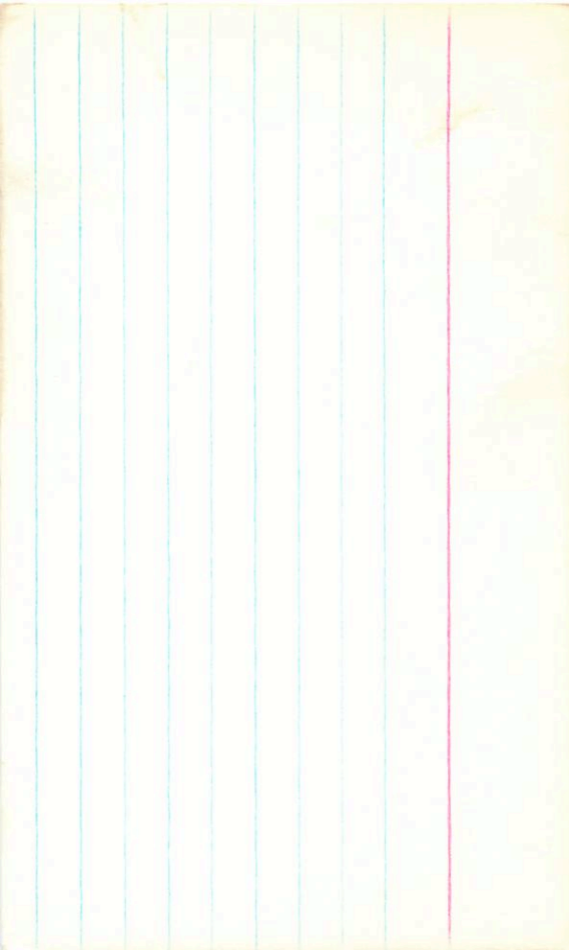


1/2

886 250 + 910 - 652 = 248
888 - 252 + 824 - 638 = 258
888 - 251 + 820 - 622 = 255
888 - 251 + 818 - 634 = 251

886 + 424 + 101 + 135

8.63 + 0.25 = 18 Sept 75
8.64 + 0.24 = 17 Oct 75
8.64 + 0.24 = 17 Oct 75



189558 19 59 18

-12 20

Anderson 77

R 7.72 + 0.52 - 0.02

7.70 + 0.58 - 0.11 19 May 72

7.72 + 0.58 - 0.135 24 Jun 72

7.71 1.47 + 0.58 - 0.125

2.72 + 0.57 - 0.07 6 Aug

2.48 + 0.22 18 Oct 72

2.49 + 0.23 21 May 72

2.55 + 0.24 27 Jun 72

2.52 2.52 + 0.235

7.54 + 0.24 5 Sept 72
2.55 + 0.24 27 Jun 72

$$\begin{aligned} & (7.71 + 70 + 29) \\ & (8.00 + 1.8 + 25.5) \end{aligned}$$

TR ~~12~~ 73" 706 30.5

$$\begin{aligned} 192344 & \sqrt{} \\ 152343 & \phantom{\sqrt{}} \end{aligned}$$

$$\begin{aligned} 7.56 & + 0.245 \text{ 10 July 77} \\ 7.58 & + 0.24 \text{ 13 July 77} \\ \hline 7.57 & \end{aligned}$$

10 June 77 16" 756 + 0.245

$$\begin{aligned} 7.72 & - 274 \text{ 924} - 352 \\ 7.70 & - 274 \text{ 925} - 354 \end{aligned}$$

$$\begin{aligned} 7.88 & + 0.235 \text{ 12 July 77} \\ 7.90 & + 0.23 \text{ 18 July 77} \\ \hline 7.89 & \end{aligned}$$

12 June 77 16" 706 - 400

$$\begin{aligned} 8.00 & - 282 \text{ 919} - 412 \\ 7.99 & - 286 \text{ 922} - 406 \end{aligned}$$

7728

20

15

00

-12

25.5

641 B9

$$\begin{array}{r}
 102 \quad 508 \\
 204 \\
 \hline
 1112
 \end{array}$$

$$\begin{array}{r}
 14^m 27^s \\
 6-32+01
 \end{array}$$

6.29 -661 +828 +654 2.322 17 Aug 75

6.32 -637 +790 +089 2.319 18

6.30 -649 +809 +071.7 2.320

~~6.30 +043 080 903 2.834~~

129

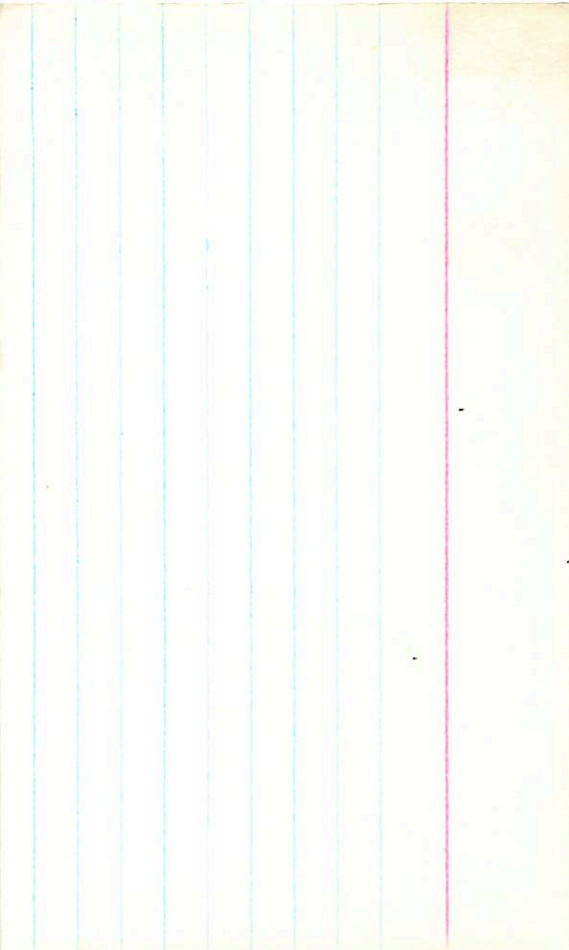
93

894

106

$$\begin{array}{r}
 106 \\
 \hline
 11090
 \end{array}$$

106



✓ ✓ Sho PI only →

R

10.82 + 39 - 245

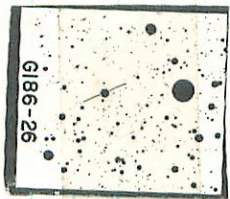
Wilson 12754 20-2341 +2458

R-186-26 10.74 +0.155 28 Oct 75
10.82 +0.185 3 mg 77

1759

10.85 -355 +789 -508 28 Aug 75
10.81 -422 +794 -455 13 Oct 75
10.90 -427 787 -495 17 Oct 75
10.82 -415 0084 -490⁵ 240

~~10.82 +245 082 303~~ (3)



G186-26

✓ JJ sub. l. 14 Also (R) (no) (X)

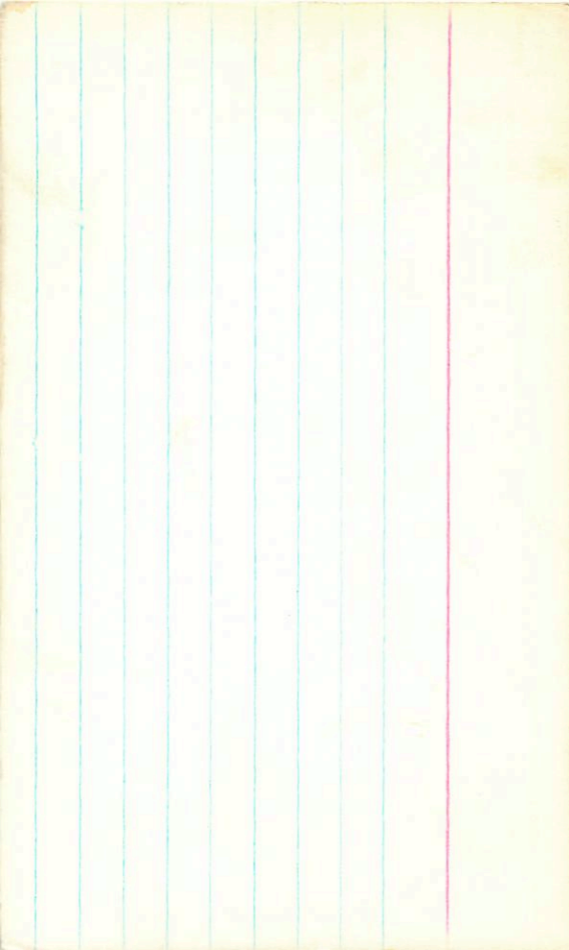
9.54 + 65.00

195636 20 31 27 -09 26

29

9.53	(-211)	(642)	-345	29 Aug 75
9.56	-248	+749	-349	18 Oct 75
9.55	-251	+742	-321	31 Oct 75
9.54	-248	+734	-314	1 Nov 75
9.54	-249	+743	-382	
			1362	

9.33 + 0.30 45476
~~9.32 - 10.30 43114~~
9.32 + 0.30 (2)



11-509

7817 20 27 10 -35 41 6.22 to

6.08 -706 +794 -257⁵⁴ 2.211 28 Aug 75

6.14 -650 +782 -271 2.208 18 Aug 75

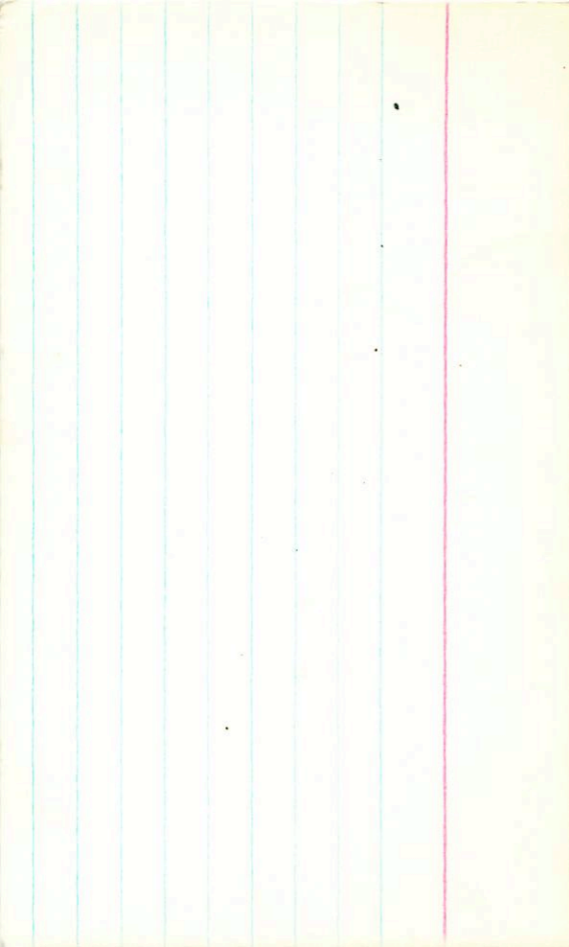
6.11 -703 +799 -282 2.207 14 Aug 75

6.12 -700 +790 -270⁵⁴ 2.209

6.12 -011 661 542 2.701 (3)

2.3 1555 14

2.12



9th 4th

7914 20 26 64 -18 17 5.10 -07

¹⁷⁹
2.297 2120075
2.279 1711978

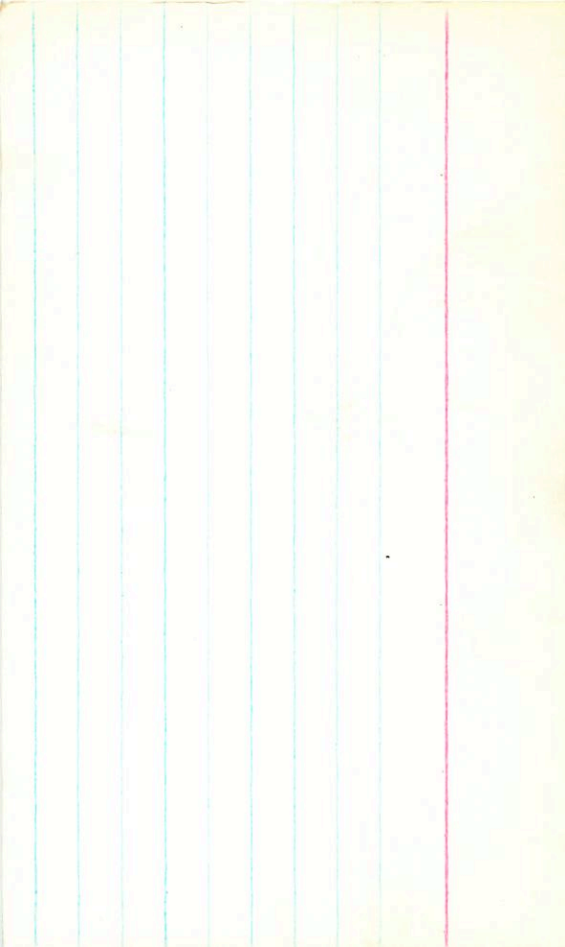
5.08 -695
+802 -798

5.10 -690
5.09 -692
5.10 -690
5.09 -692
5.10 -690
5.09 -692
5.10 -690
5.09 -692
5.10 -690
5.09 -692

~~5.09 -003 073 627 2244~~
+0.85

072 622
144

627 766



Master ✓ TR ✓ ✓ Selam

+2603943 20 37 52 +26 37 90 658

220

9.80 265 950-450 10 July 77
8.81 260 931-415 16 July 77

8.77 +0.245 12 July 77
8.72 +0.225 13 July 77
8.72 +0.235 14 July 77

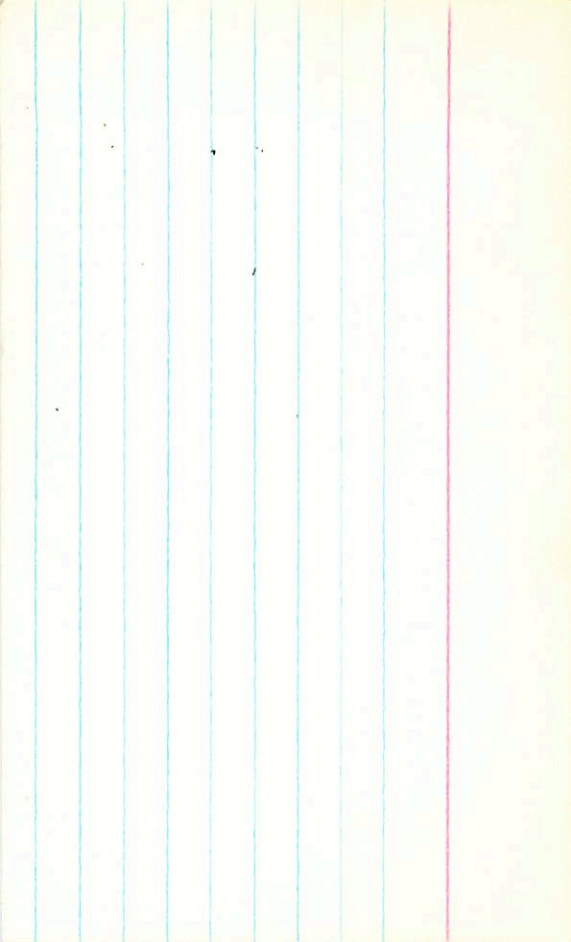
4

7856 20 33 14 -30 34 6.5289

6.50 -714 +838 -010 2.288 13 Aug 75
6.42 -724 +846 +008 2.307 17 Aug 75
6.46 -719 +840 -007 2.294

~~6.46 -031 103 827 2.803~~

+0.1



7881 20 39 41 -66 52 5.14-06

5.13-696 +794 +180 2.221 17 Aug 75
5.15-675 +751 +186 2.209 14 Aug 75

5.14-688 +768 +183 2.215 ✓
101

~~5.14 +003 043 1016 2.785~~

14 Aug 75
= 1.5

1016

24 51 26 33 44 20 34 6.52 189