

2537 ✓

83082 ✓

-61° 12' 53" 9 30 40 -61 52 9.84 +13

2.774

9.89	-585	+750	-473	2.208	10 Nov 76
9.58	-565	808	452	2.208	27 Apr 76
9.55	-580	796	546	2.208	

-3604326 1000 00- 254.1 -1.4

RS 20 8 11 42 -26 36 9.37+16-55

9.42 -511 +701 -676 2.111 17210776

9.37 -519 692 -664 2.094 210976

9.39 -509 701 -676 2.107 22...

9.36 -517 710 -672 2.103 23

9.38 -514 701 -673 2.104 (4)

X 1044 00 25-40 +0.3

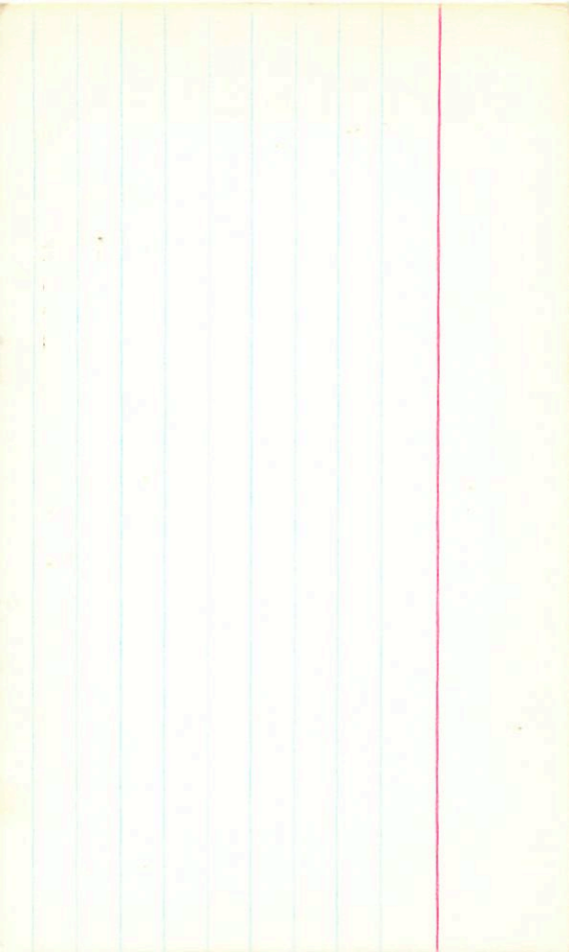
19 18 33 -35 32.5-1048 +0.2-0.1

5

10.44 -89662-675 2.085²³⁷⁶ W

10.54 -88613-577 2.092244m

①

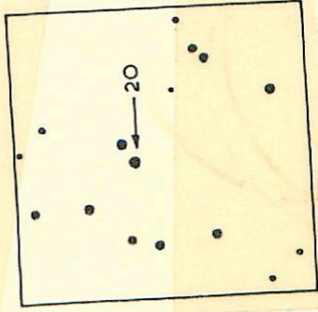


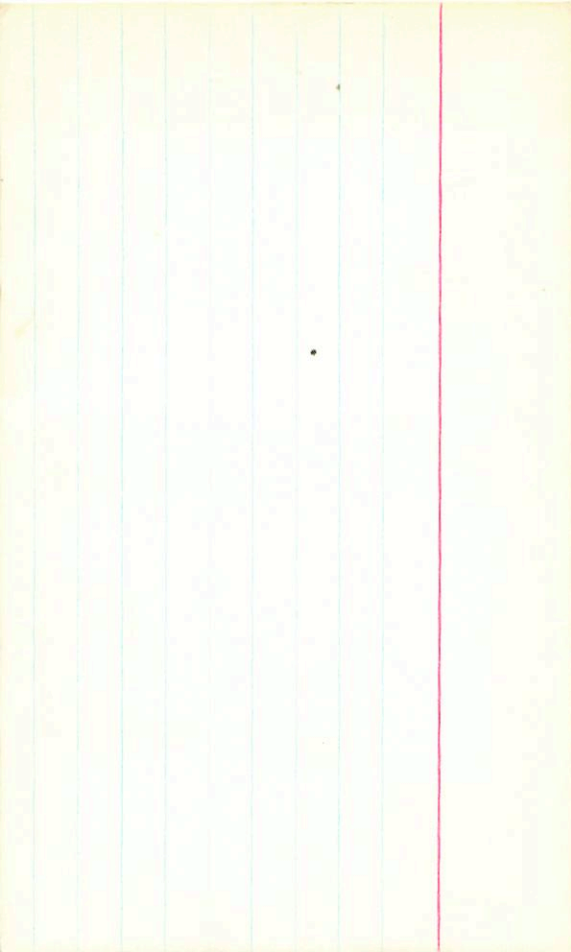
20 8 ~~11~~ 42 ~~+~~

36 9.37 + 16 - 55

-36

21 Apr
9.37 - 56 692 - 664 2.094 76
9.29 - 509 701 - 676 2.107 22 Apr
9.36 - 525 710 - 672 2.103 23 Apr
9.38 - 517 701 - 671 2.108
2.101 (3)





RS 27 8 14 27 -36 00.5 1115-01-47

-607 4764 -~~367~~⁴⁴⁰ 2247

11.18 -663.7778-422 2356 26p 75

30.5 $\frac{1}{2}$ -7 -0.064

26 8 13 08 -36 52.15 7.14-09-92

53 14 12

+07 -67 -105 2.58

7.11 -676 +676 -897 2.103 26 June 15
7.17 -708 +708 -991 2.105 28 June 75
7.14 -692 +708 -894 2.104

→ 7.14 +047 -010 -060 2.592

17 104 -0.06

$B_1(8.2) = -70.17 V_0 = 6.4$

Bo. 5 II

RS -3404359 7014 0B 2545 1.3

26 8 13 05 -86 525 7.14-09-52

7.11-0626 + 675-897 2.103 26 Jan 76

7.17-708 + 240 + 800 - 11.2

7.11-620 + 661 - 852 2.094

7.17-642 + 726 - 846 2.096

7.18-657 + 727 - 971 1.508

7.15-640 + 726 - 940 2.094 (3)

1007 CD - 3404494 OB + 2524 EO

1068 8 12 85 -84 24 9.32+25-64

9.31

9.31-434 +718 -546 2.072 26 Jun 75

→ 9.01-393 +704 -987. 2.063
2997.

9.32-383 +711 -583 2.075 17 Mar 76

9.32-383 +708 -540 2.069 (2)

E 446 733
6.56

11.10 + 18 - 55

28 24

9.32 + 38 - 64

34 24

9.57
2.9
11.00

12 34 - 34

12 38 34 24

1473

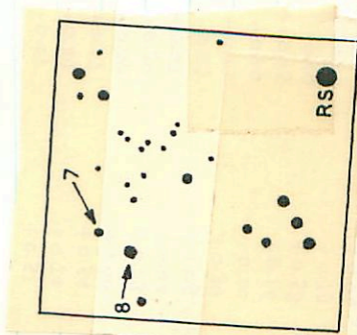
11.12 - 509 + 715 - 742 - 2.137 26 Jan
11.12 - 453 + 701 - 787 2.128

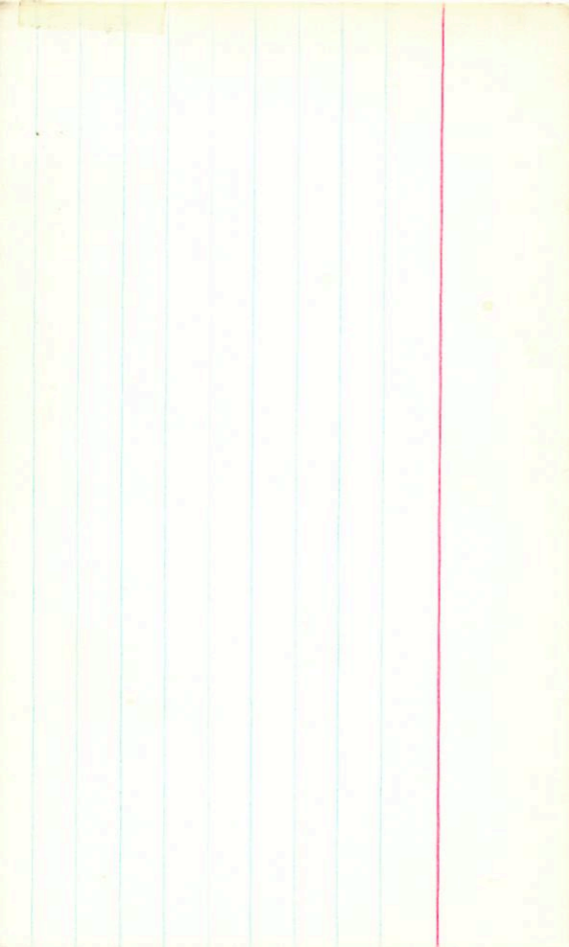
11.04 - 511 + 743 - 461 2.129 31 Apr 76
11.01 - 474 + 721 - 817 2.135 22 Apr 76
8106 - 481 + 788 - 790 2.130 (3)

9.31 - 439 + 718 - 996 2.072 26 Jan 75
- 373 904 2.003

9.31 + 820 + 005 - 190 2.544

8.101 2.244





250.5 - 0.3

PS1 8 06 35 -82 59.5 1005 + 45 - 4

+ 445 - 063 + 132

$$\begin{array}{r} -279 \quad +644 \quad -767 \quad 2097 \\ 10.03 \quad -385 \quad +658 \quad -779 \quad 2.106 \quad 26 \text{ Jan } 75 \\ 10.01 \quad -305 \quad 664 \quad -814 \quad 2.135 \quad 21 \text{ Apr } 76 \\ \hline 10.02 \quad -292 \quad 654 \quad -792 \quad 2.118 \quad \textcircled{2} \end{array}$$

R 512 4 13 06 -35 26 10.25 +24-63

(528) +668 ~~324~~ 2123

10.21 594 +682-824 2102 26 Jan 75

10.22 5160 +651-856 2114 24 Apr 76

10.22 5164 +711-924 2119 22 Apr 76

10.22 5160 +650-905 2119 ③

TX Mud -7

12 8 13 06

-35 26 10.25 +24 -63

26 p 75

10.21-484 +682-884 2132

20.70

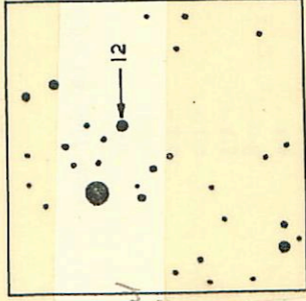
→ 10.21-428 +668-870 2123 ^{21 p 20}

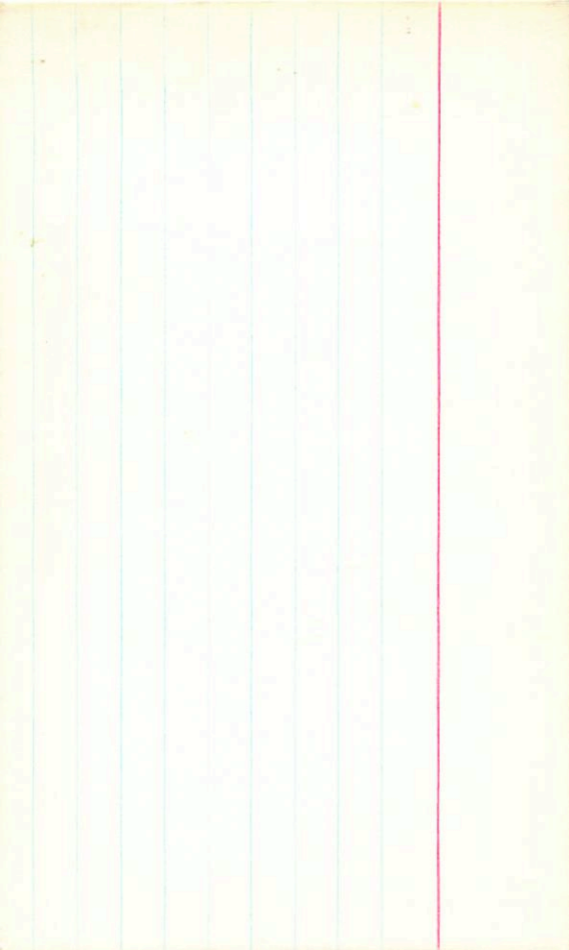
10.22-460 +691-896 2114 ^{21 p 16}

10.22-464 +711-925 2118 ^{22"}

10.22-460 +690-898 2118 ③

E +40 9.5
-3.5
11.9



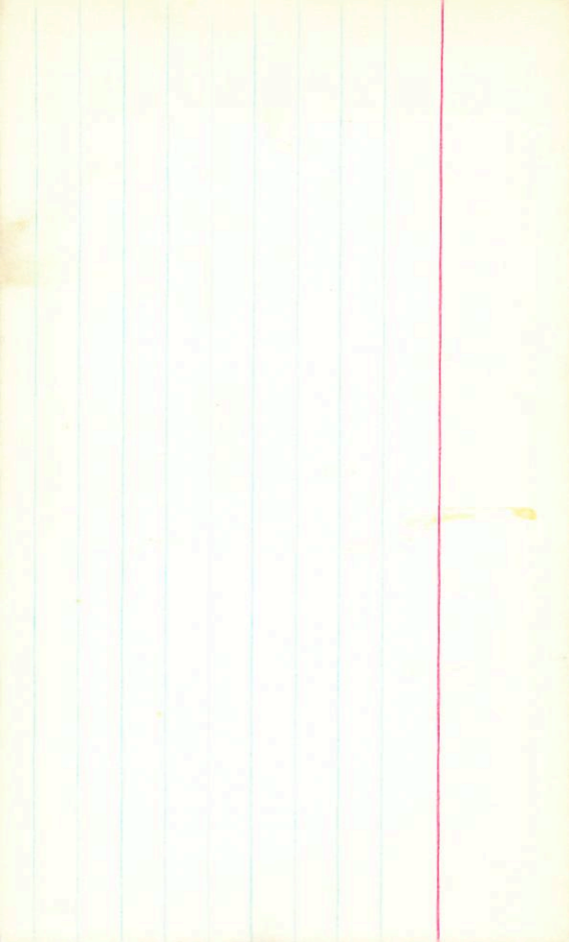


1017 08 252.9 0.0

9 ~~08~~ 8 14 06 -34 45.5 11.54+16 -49

S

W
G...;



993 OB ce 251.7 +0.1

NS3 8 11 23 -33 45 11.18 +99 -55

-257 +611 -1042
~~-1009~~

2-003

11.15 -313 +625 -1054

2-012

26 Jun 75

+56 -187
2.575

E(40.55)

68

Done 8 17 20

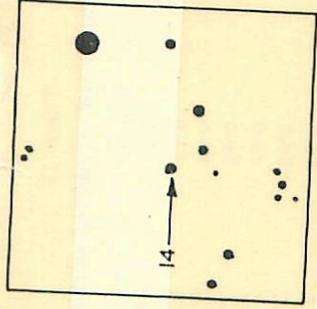
-85 35.5 9.21 + 45 - 54

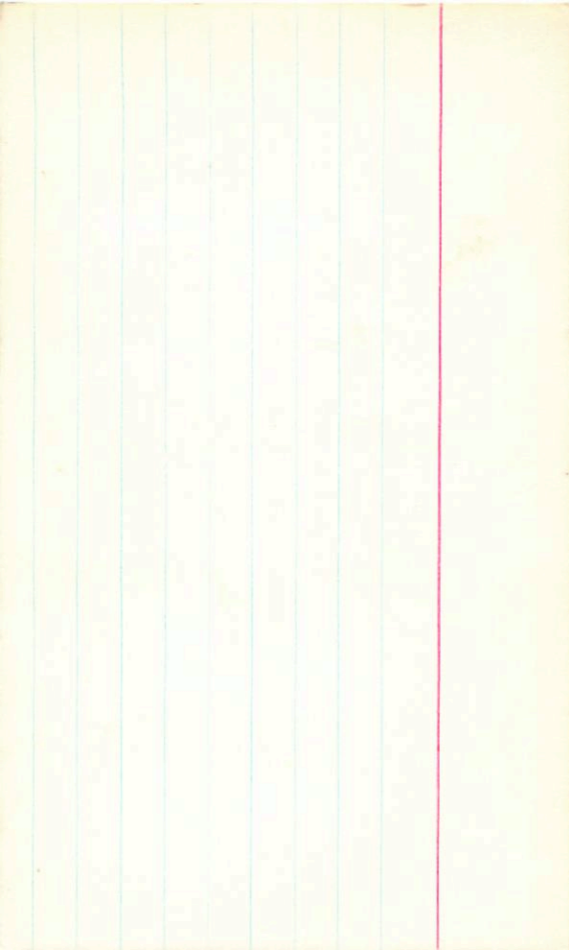
-103 103

442 -11 -16 26p275

9.17 - 346 + 633 - 4720 2.101

→ 9.17 + 421 - 070 - 103 2.579





10.20 -3504384 08 253.6 -0.4

RS 14 8 14 20 -35 85.5 5.21 HS-54

9.17 -376 +633 -920 2.101 26 Jan 75

9.17 -250 +619 -875 2.092
-910

9.22-303 +637 -925 2.105 17 Mar 76

9.20 -296 628 -919 2.098 (2)

28

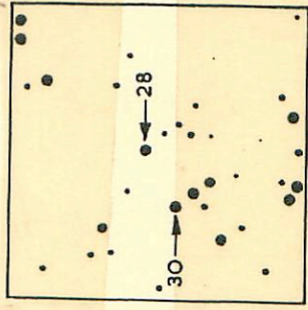
17 58
17 60

-36 03 10.19+29-66

30

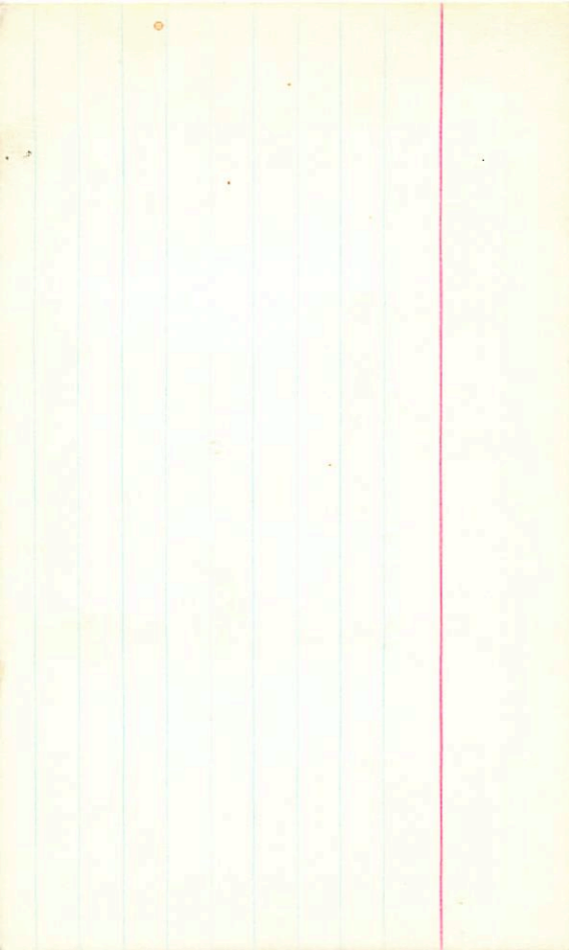
8 18 07

-36 07 9.17+32-67



11. 19. 19. 19.

19. 19. 19.



380/

395

40460

5

58

~~88~~
85

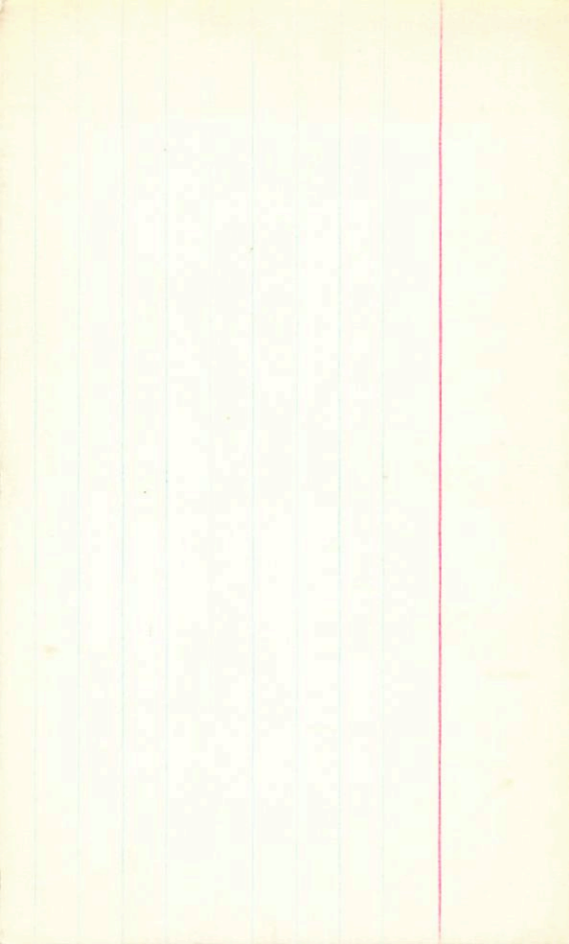
+27

16

7.9 NOV

+103.5

Done



0270

6.21-90 820-304	408-028 05-12.9	⑤
6.24-79 814-267	618 64-12.9	⑤
6.19-90 817-307	498 16-27.7	⑤
6.20-78 822-329	86-06-17	⑤
6.20-91 823-264	152-28-16	⑤
6.19-90 829-305	20-20-17	⑤
6.19-83 820-330	21-21-14	⑤

0418

X 966 05
-3204976

① 8 06 35

-32 55.0 10.05 + 45 - 41

E 156

7.6
4.15
11.75



26 June 75

10.03-335 4658-779 2.106

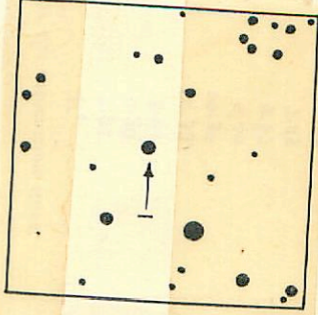
→ 10.03+432-646+802-2.545

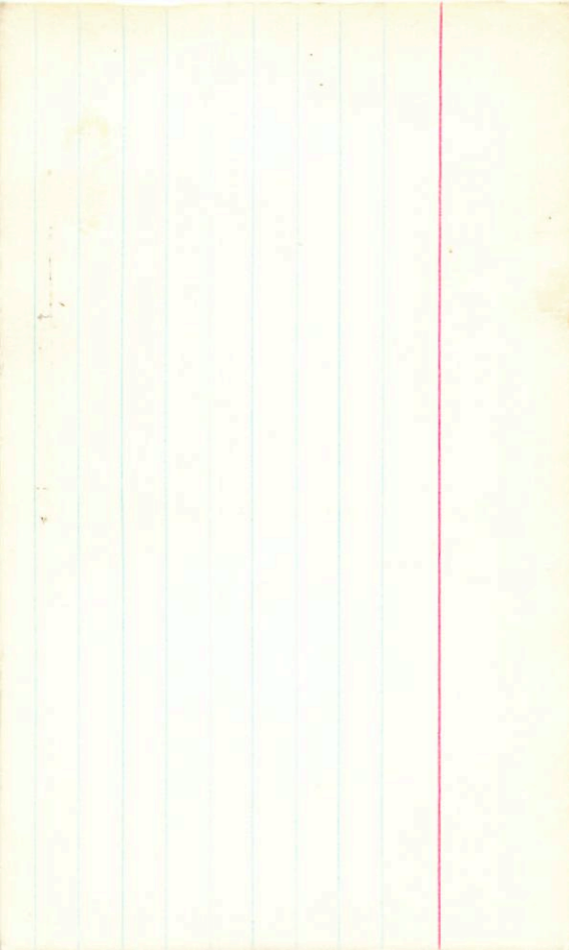
↓ 966 464 -507 E

10.03-279 644 -784 2.097

1001-305 664-814 2.138

10.02-292 654-792 2.118(2)





B12 - 3604390 1021

810028

14 35

+050 +010 (4110) E +245 V₀
8.15
2.5

9.07+17-77

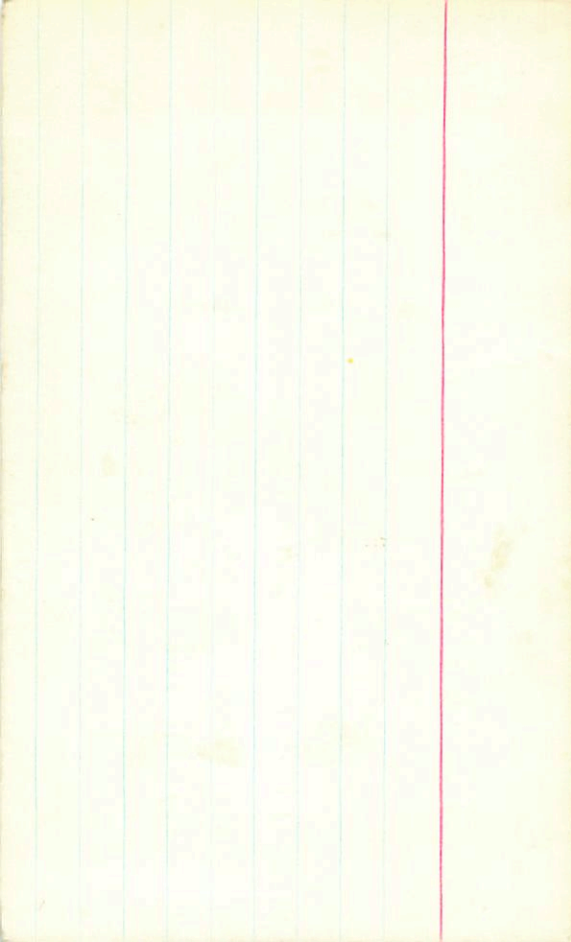
(9.19-619 +731 -802-2.115 26 Jan 75

-9.25

-9.19-563 +717 -757 2.106

9.28-588 742-810 2.126 17 Mar 76

9.24-574 +730-817 2.116 (2)



8.1.0409-06

~~2.323 \$1000~~

2.345 7mg 78

2.325 9"

2.335 (2)

EV 2000

VV 830

MV 1035

(-0.65 dm)

7.95

85 up

6281-6

8.66 - 624 868 +3

8.66 - 619 835 +15

8.66 - 621 851 +9

20 180 920 [1220]

8.66 070 130 935 2.835 (2)

PH 8.83 - 575 810 +107 2.323 4ent 87

HMS 120 090 1081 2.523

7.95

202789
21 17 55
24 00

9.0

X X X

4 8 89 14 08

11.14

-33 57.05

11.11+09-48

11.14-523750-518

11.15-576771-545

11.16-568750-524

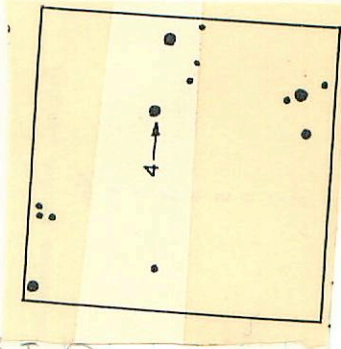
11.15-573957-530

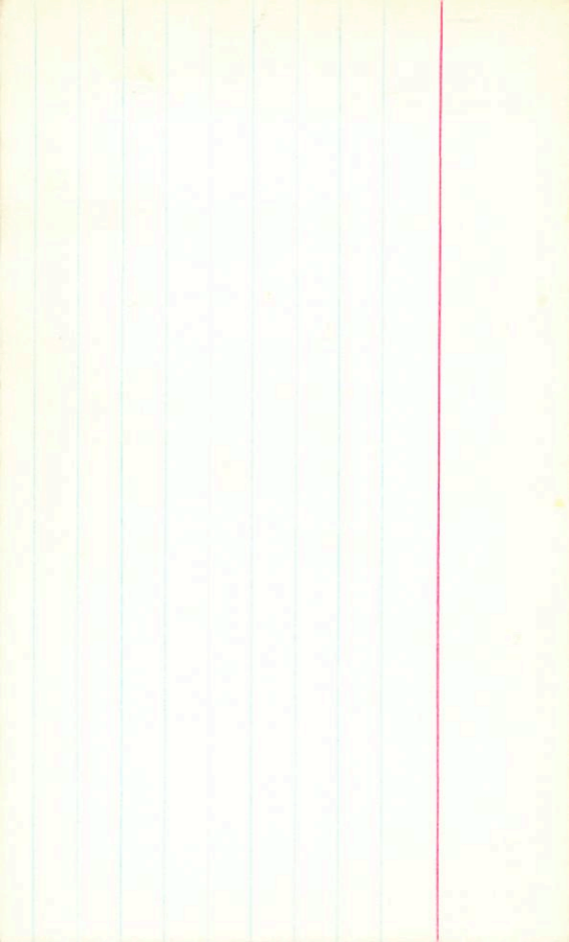
(2.165) 20A726

2126 20

3.123 24

2126 20





Emmission

993 251.7
10.1

E + 605 955

3

8

11 23

08 $\frac{4}{3}$

-33

45

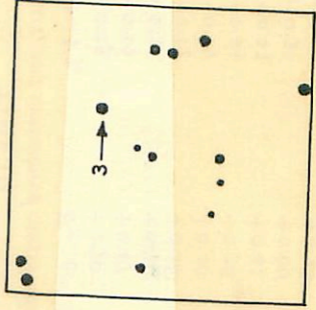
11.18 70.49 -0.55

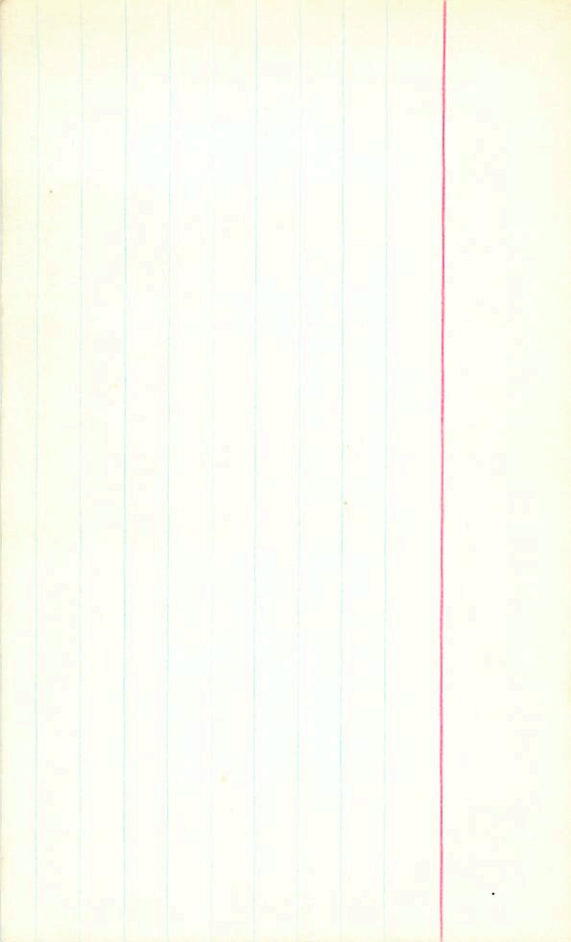
11.15 -313 11.25 70.54 2012 26 Jun

→

11.15 7456 -076 -246 2483

10.8 701 2524
2115





X X X

S 8 15 07

-33 39

1108+07-52

467 (52 23Apr)

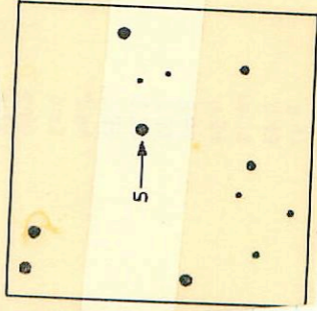
1103-555 753-620 2.152 76

1103-575 751-695 2.122 23Apr

1109-555 764-672 2.126 22

1105-542 757-670 2.128 (3)

1/2



Plan

80436

2140

61° 12' 4 9 16 16 -62 20 8.86-05

-886	189	795	-493	199	2.159	1022076
			448			
8.87	-693	773	- 266		2.164	152476
			163			
8.86	-693	791	- 248		2.189	162676
			163			
8.86	-696	901	-486		2.158	1022076
<hr/>						
8.86	-690	790	-478		2.160	1022076

000 672 +430 2.142 (4)

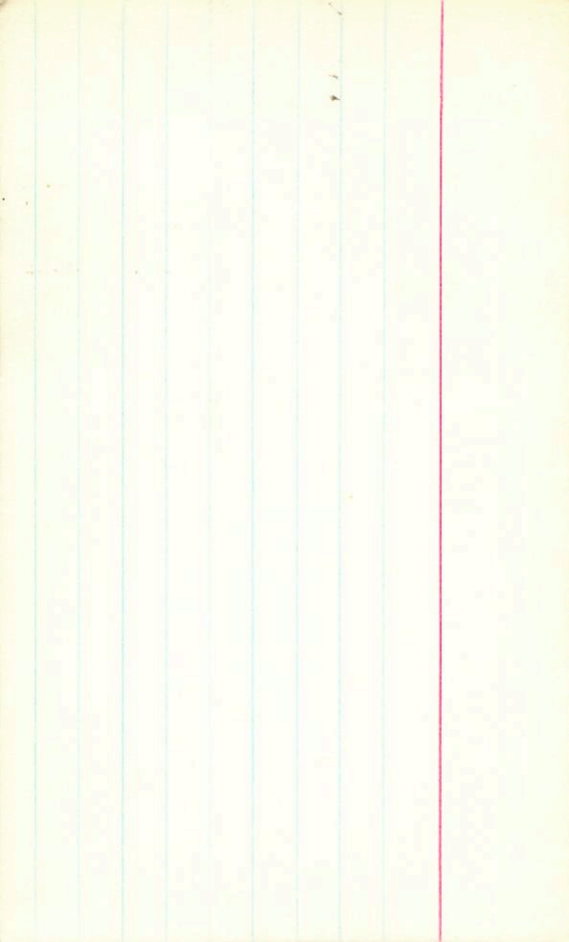
4 ~~Ar~~ 98Y OB. 252.1 -0.7

6 8 10 19 -34 21 10.63+14 -60④

S

W ⊙ ∴

10.68-589 735-733 2.110 24 Apr 76



135697 Pa 15 15 05 +13 33 207 +81

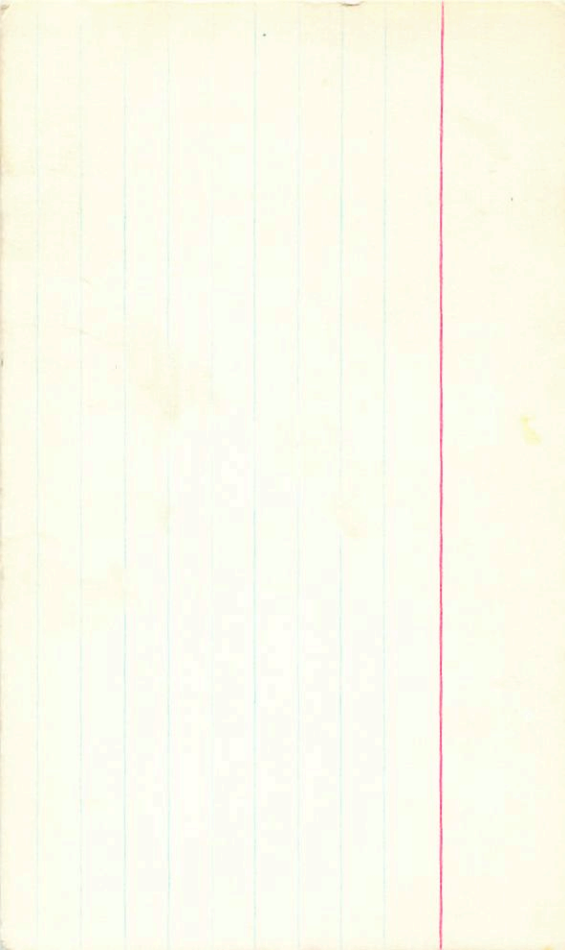
R. I. Day

X X X

15 8 14 51 -35 42 10.85 427 -62

S
.
O
.
.

1085 -417 656 -917 2.105 22 Apr 76
1084 -440 704 -943 2.104 23 Apr 76
1081 -416 654 -906 2.087 24
1085 -428 667 -918 2.100



RS 7 8 12 34 -34 23 11.10 +18 -55

-453 +201 ~~-741~~ -737 2.128

11.12 -~~589~~ +715 -~~782~~ 2.127 26 Jan 75

11.04 -511 +783 -861 2.129 21 Apr 76

11.01 -479 +731 -917 2.135 22

11.06 -481 +789 -740 2.130 (3)

