

20427-2935 ✓ 20 44 35 -29 32

12.6 14.1 am

① .

3580

1159 411.5 217.79
6.8 g/l

20518-6007 20 54 10 -60 00

✓ 11.5 B.D. mm

3600

10.47 +0.257 15 June 74

144-40

20 48 15

+16 01

3589

13.1 14.2 m



12.47 +0.543 14 Aug 74

✓
20444 25 58 20 46 10 25 51.5

12.6.14.1 m

①: ~~3585~~

12.14 + 10558 20.26

-46013670

20894-4655

21

07 30

-46

48

11.6 13.0 14.2

✓ 3623

1460

107304

107304

107304

107304

10.16

10.592 15 June 79

107304

107304

107304

20593-0627 21 00 55 -06 19.5

✓

11.0 12.8 M3

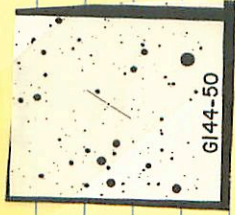
3612

10.04 +1.026 15 June 74

✓ 144-50 21 00 30 +20 39

3670

13.8 18.2 m



12.70 +1202 19 Aug 79

21007-1044 ✓ 21 02 20 -10 37

3617 14.3 15.8 m

0

1365 +1270 20/2/79

✓
21000-3032 gm (21 01 50 -30 26)
21003-3034 (21 02 05 -30 27) 203" 115-0

12.3 13.5 m

13.1 14.8 m

3614/6

1153 T0.950 20 July 74

12.45 11071 20 July 74

/

20597-5034 21 01 50 -50 27.5

①

3615

12.9 14.4 m

~ r

11.70 4/17/2009

✓ 144-60 27 04 10 +14 30.5

144-62 → 27 04 25 +14 27.5 ←

3621(B)

128 141 h.m

112 125 h

+105

1175 +0.871 15 Aug 79

984 +0.463 15 Aug 79





144-61 ✓ 21 04 15 +19 31.5

3122 N. 9 12.2 to-m



10.10 +0.562 19.12.73

21026-1117 ✓ 21 04 15 -11 09.5

2623

12.7 14.0 km

• (•) ,

12.14 + 0.871 209274

145-35 ↓

21 17 50 +22 59

13.0 14.1 R

3651



1169 +0.6.07 19/12/29

3654

21 19 10

-62

335 M. 15.6

m

Ⓟ

14.23

10.503 11/20

✓ 145-23 21 11 20 +17 28.5

133 14.9 m

3241



12.87 + 0.865 (4 Aug 29)

2/20/22-2822 ✓

~~2/20/22~~

21 21 55 -28 15

14.3 16.0 m

Colby Sted

Wright m

1392 +1315 20/24

3/1/22

2176-4105 21 19 55 -60 57

012 on
11 Aug 11

13.5 15.0 m red

John King
John King

John King
John King
John King

3659

X

13.24 40.44 10.44
13.21 40.46 11.11
13.25 40.48 11.11

187-39 ✓ 2, 18 20 +28 27

13.0 14.8 m

3650



12.51 15.89 +

21222-4440 ✓ 21 24 05 -44 32.5

3671 124 14.2 m

[Handwritten signature]

⊙

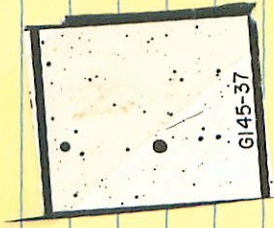
12.45 + 0.848 11A₂75

145-37 ✓ 21 23 25 +13 13

12.5 13.8 km

3667

1202 +0672 19 Aug 79



✓ 21211-3050 21 22 55 -30 42

① . . . 132 15.0 m

3665

13.18 + 1.0602076