

✓ ✓ (P#) ✓ ✓

11.32 + 0.74 + 0.15

Run 693 8 49 08 + 07 43.5

6-76-5 104 97 99

11.26 - 230⁴⁶ 920⁵⁷ - 595 17 Jun 76

11.23 - 228 + 900 - 642 11 Jun 76 (11.01 + 0.31 16 Apr 76)

11.25 - 246 921 - 600 12 Jun 76 11.06 + 0.28 18 Apr 76

11.20 (4172) 926 - 642 15 " " 11.03 + 0.27 21 Jun 76

11.24 (235) 920 - 620 (4) (10.92 + 0.34) 17 Jun 76

477 141 284

10.97 ~~10.505~~
11.03 + 0.285 (3)

330

G 46-5



H075530

8 49 20 - 5 27.5

~~8 49 20~~ ~~05 27~~ 9.18 +74 +22 ^(R)

2085

4

8.60	270	23 ^{rw}	9.20	+72	+21
8.52	+0.275	⁶⁴ 17m 20	9.19	+73	+215
8.98	+0.285	16 26 69			
8.94	+0.27	15 " 4			
	+0.275				

13

8.86	+0.257	9 Jun 81
8.87	+0.266	19 Jul 82
<u>8.86</u>	<u>+0.262</u>	

2109



-1402759

9

07

30

-15

03.18

21-7.5

60

233-318 897 -507 2.120 6 Jan 91

234-321 890 -514 2.116 27 Jan 91

234-320 884 -512 2.118

76096
3650
10 55 +15 06 6.50+76

0.0 0.1

2114

93036
3650

6.45-278 970 -547³² 16 Jun 77 6.22 2.57
 6.46-263 946 -522 2 Jan 77 6.16 2.44
 6.44-276 972 -547 6 " " 6.20 2.50
 6.45-271 985 -516 12 Jun 77 6.29 +0.27 2.77
 6.45-272 975 ~~524~~ +0.255 June 2.77

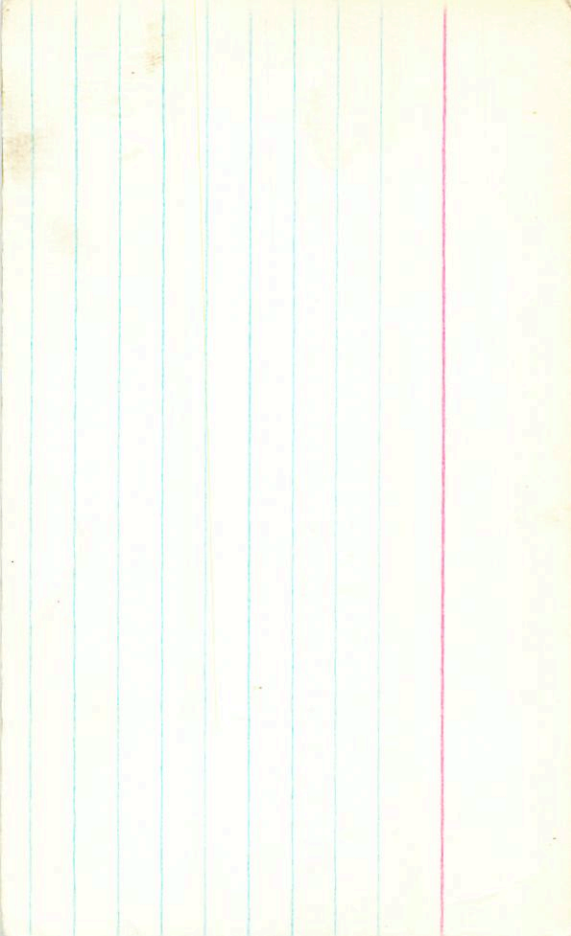
PTD

(X)

(4)

6.20 270 →
 6.18 241
2.57

8.10 +0.322 13 Jun
~~8.58 +0.248 9 Mar 73~~
 8.58 +0.316 17 Mar 73



3650

9 11 15 +15 05 650 d67

$\Delta m = 0$
0.1

6.51 -276 986 -542 14 Jan 77

6.415 -271 985 (-516) 12 Jan 77

6.44 -276 972 -547 6 Jan 77

6.46 -263 (946) -522 2 Jan 77

6.45 -278 970 -547 16 Jan 77

6.47 -275 978 -540 (5)

(P-I)

17 (195)

8.25 - 10.35 (3) 57 8.96 - 7.95 + 36

81044 95 9 21 20 -32 03.5
 995 -234 992 -478 12 21 8
 888 -218 975 -477 9 Apr 77
 8.61 -229 1001 -499 11 Apr 77 6.2 77
 8.89 -230 1003 -313 7 Jan 77 8.56 + 0.325 12m
 7.87 -198 975 -462 13 May 77 8.61 + 0.30 (2.1916)
 8.87 -223 989 -516 10 Apr 77 8.45 + 0.305 12 Apr 77
 8.89 -229 989 -488 (5) 8.54 + 0.31 (4)

2130

more [8.58 + 0.325] 22 Dec 81
 260 260
 195 (X)

VHS 2197

9 28 40

+05 43.5

7082106

~~9 28 48~~

~~+05 48~~

7.23 +1.02

7.19 -147 1225 -510 4883

7.21 -135 1223 -506 4873

7.20 -141 1224 -523

6.65

~~6.70~~

6.65

~~6.69~~

+0.365 132870

+0.39 167469

+0.36

+0.37

5 5 41 314

Repeating

(*)

(*)

(213)

+368 copy

RR

Wm

665

37

629

9 21 17 - 32° 03.5

AD 81044

9 8.20 58 - 32 0.6 8.84 + 79
8.37 +0.345 7 AM '70
8.28 +0.33 4 AM '70

9 56 +0.325 rem⁷⁷

8.61 +0.30 ②

8.58 +0.31

8.16 +0.365 12 Mar '70

8.57 +0.295 29 Jan '69

8.65 +0.305 15 Dec '69

8.61 +0.30

8.22 +0.30

23 Nov 8.87 +0.80 +0.35

3 Dec⁶⁹ 885 +0.79 +0.37

886 +0.745 +0.36

8.25 +0.35 ③



~ 30

648-21

69 36 00 +02 23.5

11.3 11.9

60"



11.558-71 1348-551 29.8

2161

11.55-80 1348-560 29.8

11.556-76 1348-556 (2)



G48-21

10.50 +0.431 20.2879

11.00 +0.434 18.9272

10.95 +0.434

LHS 2150 9 30 15 - 47 18

H1082516

(H)

~~9 29 44 - 47 13 8.49 + 91~~

7.90 + 0.38 RMar 70

2150

(H)

otr

~~8.10 + 0.30 26 Jan 69~~

~~8.20 + 0.29 15 Feb 69~~

8.15 + 0.295

~~7.90 + 0.38 1 Mar 70~~

~~7.73 + 0.37 2 Mar 70~~

~~7.82 + 0.375~~

(2)

8.15 + 0.297 3 Feb 81

8.15 + 0.295 @ 1969

3 Dec 69 8.53 + 0.89 + 0.64

30 Dec 69 8.53 + 0.88 + 0.60

8.53 + 0.885 + 0.62

LH62150

(X)

8.50

1192

1132

²³²

491

32484

8.52

197

1136

475

22 Jan 72

8.50

186

1119

464

182482

8.51

192

1130

477

(3)

-3805760 ✓ 09 37 50 -39 17 10.5 11.6 12

09367-3909

7827

~~10.49 -48 1378 -624~~

~~10.48 -32 1288 -545 20~~

~~10.47 -32 1276 -591 8~~

~~10.48 -32 1282 -543 2~~

1 mod

X

(2165)

9.81 10.460 8279

(20) 9.83 10.461 13 Jan 12

9.82 10.460

✓ Perf ✓ ~~also~~

10.50 + 38 - 19

N was 899 { 9 39 40 + 01 06 } ~~2119~~ ~~2119~~ ~~2119~~

~~2119~~ ~~2119~~ ~~2119~~

648-29 (2119) (2119)

1047-394 + 784 - 517 10 m 76

1047 = 416 + 701 - 516 11 m 76

1047 = 414 + 786 - 509 (2)

10.49 + 0.175 13 m 76

10.51 + 0.160 27 m 76

10.50 + 0.165 (2)

2.173 12 m 83

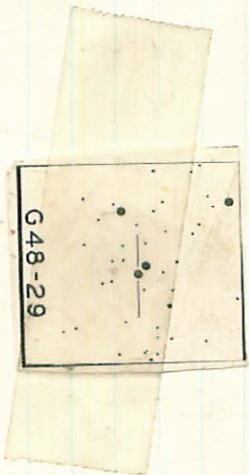
2.159 9 m 83

2.166

10.46 3.13 0.51 3.54

(600)

G48-29



09580 - 5830

09 53 55 - 58 38 9.3 104

-5830 (5830)

9.04 - 176 1170 505 - 505 162479

9.01 - 176 1170 505 - 505 162479

9.02 - 176 1170 505 - 505 162479

9.10 40.223 42479

8.55 - 8.55 1654

8.55 - 8.55 1654

104

-453 to 5 (3) August

-16.4 to 1.5 Aug 4

$\sqrt{2551} \text{ (A)}$ $\rho = -30\%$ above RT ✓
~~89499~~ $\sqrt{10 \ 08 \ 45} - 84 \ 5.9 \ 8.65 + 72$

D.S. Evans R.H. Stoy MNASSA 18,144 1959 very wide lines

8.65 -222 791 -571 20213

8.71 -200 792 -583 10 mar 76

8.66 -217 789 (54) 17 mar 76

8.66 -207 798 -566 22 mar 76

$\underline{8.69} \quad \underline{-212} \quad \underline{790} \quad \underline{-573} \quad \text{(A)}$
 1434

(1 + 110)

8.21 +0.337 17 jun 83

$\begin{matrix} 248 \\ 338 \\ \hline 340 \end{matrix}$
 $\text{(9.30)} \quad \text{(340)}$

8.39 +0.335 21 mar 76

8.44 +0.32 17 26 76

8.41 +0.33

8.68 505 095 325 1465 (2) 4 mar

8.68

10.2 - 24
24.30 - 24.30

6183 - 1327

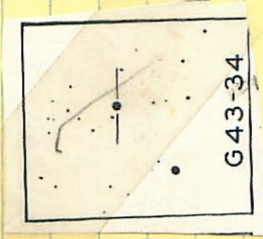
G-43-34

10 12 05
10 12 09

+09 42
+09 42

98 110 102

✓ (X) 1TR (X)
hsct

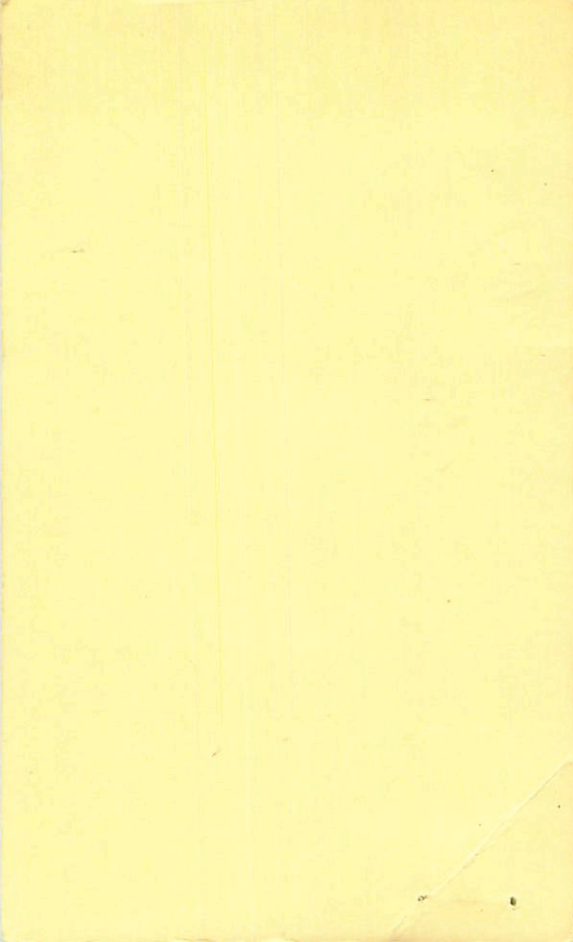


944 +0302 21474

312

320

314 (4)



Archives?

X 4 X

C 43-34

10 12 05 + 9 42.5

+ 10 21 22

9.52 + 89 + 56

9.44 + 10325

~~Handwritten scribble~~

(R)

N

982-195

1092-520 & 7mm D

986-202

1103-585 21 Aug 76

985-195

1094-510 22 "

987-202

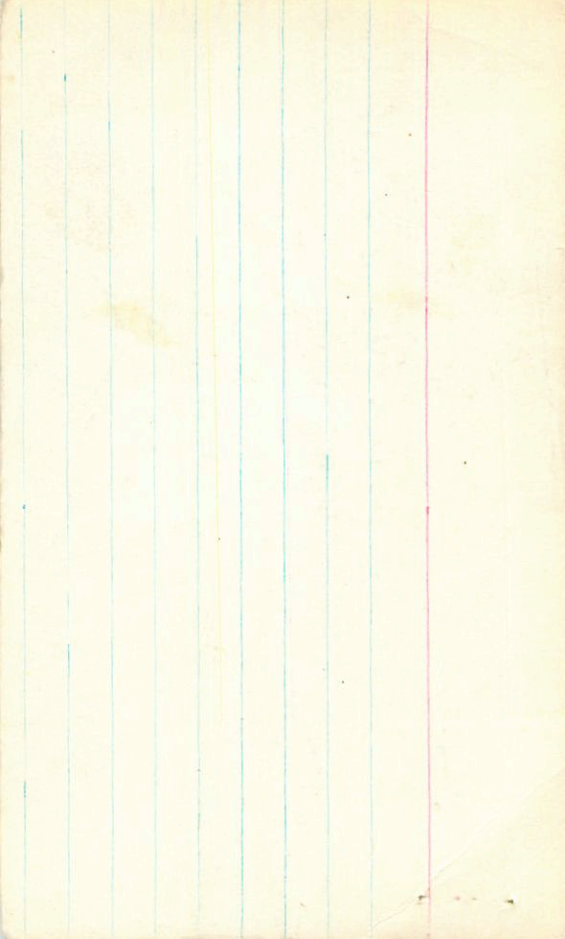
1093-505 23 "

988-202

1091-515

5004

4063 354 355



W6447 10 11 32 409 45 98 dms

992 + 90 + 58 11

17m 70 9.89 + 0.89 + 0.56

28m 70 9.94 + 0.87 + 0.55
9.92 + 89 + 56

3.6 4.234

9.44 + 0.302 4.46

18m 77 9.75 + 0.315 2.

27m 70 9.43 + 0.335

26m 70 9.46 + 0.315 9.55
9.55 + 0.322 3

9.10
9.45
9.45
9.15