

X

2 14 32 -3 87.5

70 97 G
702 99 LP

6-159-53

2 13.2 -4 045

159 43

702 | 700
2100 | +667
2.65 | -110

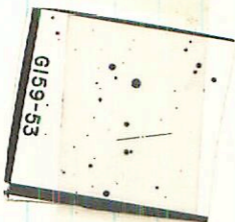
13.8 14.9 m

-2.9

12.95 +1.105 13 Dec 76
12.95 +1.125 23 Aug 77

12.95 +1.115 (2)

X



G159-53

2 22 16 -29 16.5 0.747118

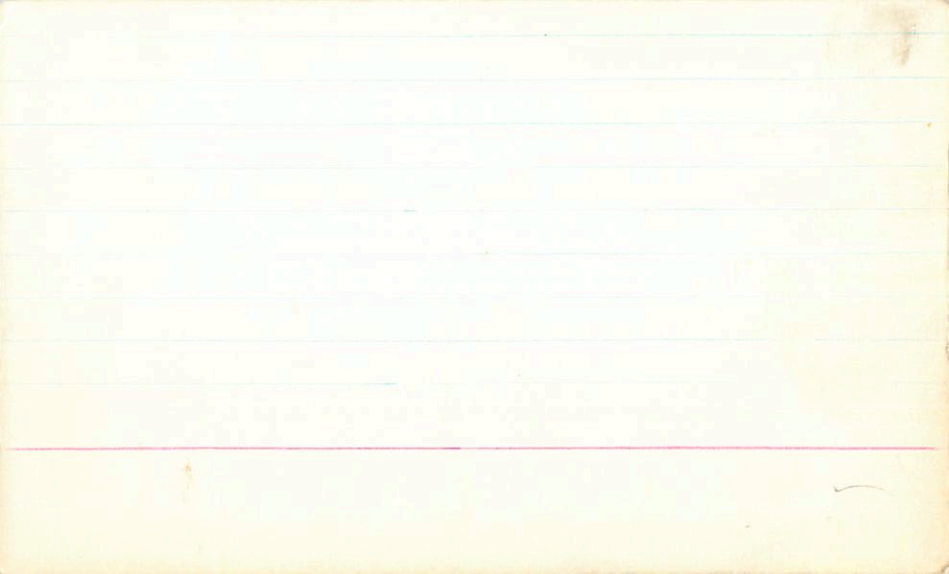
LP885-54 2 21 06 -29 23.0 13.857

2-m

815
260
405
4
756
0

14.04 +0.885 23.2477
14.12 +0.745 25"
14.18 +0.765 2

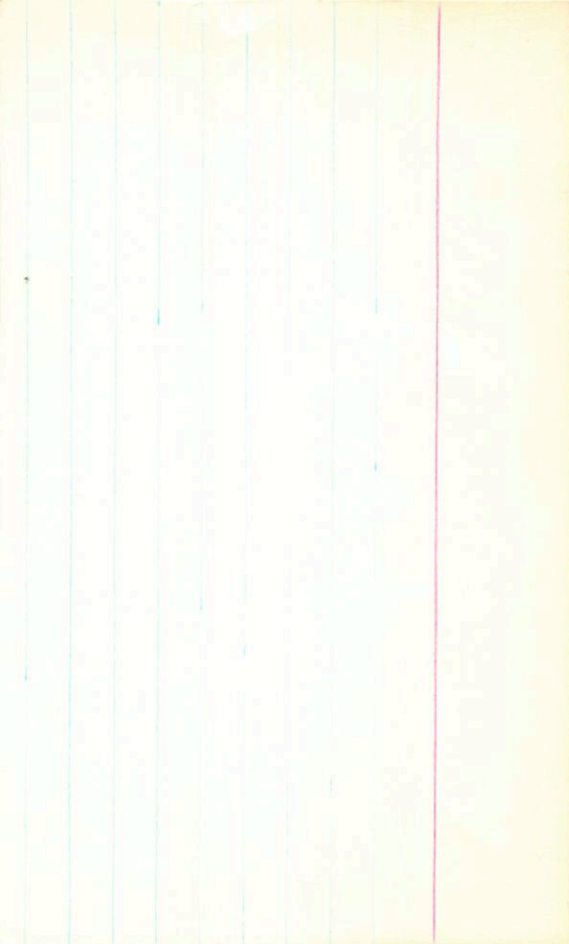
X



190 131 6

674-18/19 02 18.0 +36 40

32"



Row 19

LFT204

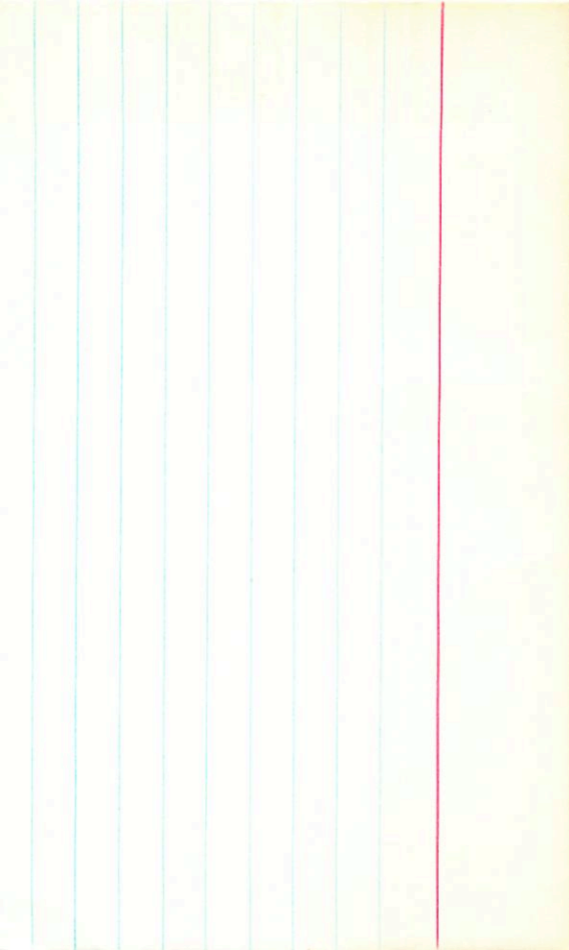
2

18.0

+35 OF

14.5 M4

G774-14



G-134-22

2 134

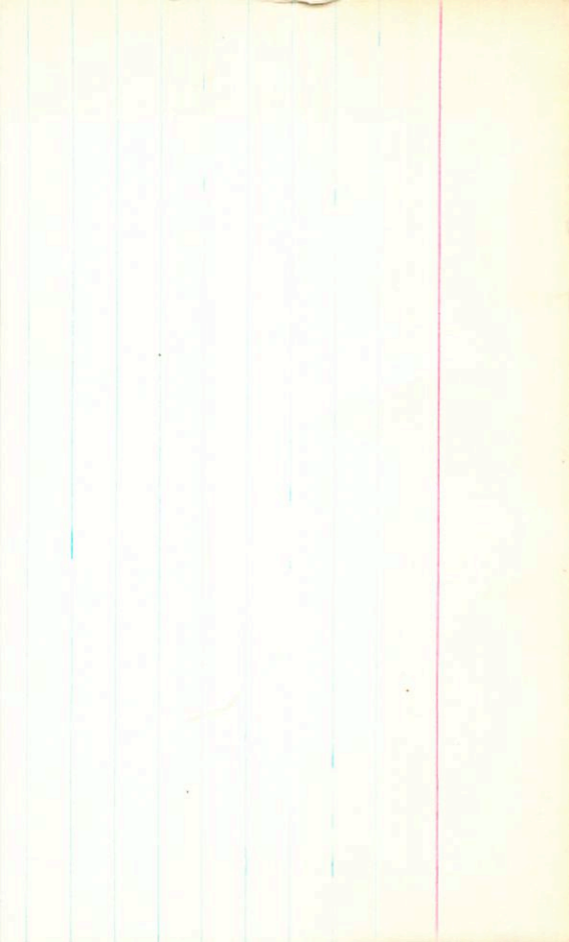
442

44

15

$$(16.23) + 0.73 - 10.02$$

NO



.715 1045 G
L 2

L^P30-180/203 2 28.7 +74 47 15.7 +3

G-221-1 16.0 +3

G-245-56

AP 37-180

chords

32 25
~~11~~ 25

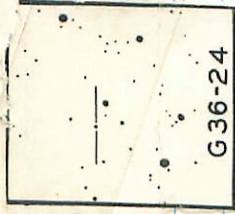
146

2 24 50.5 12.5 14.4

G-36-24

Q

(1417)



11.38

47.321 50.887

G36-24

Pass 556 ✓
LFT224 ✓

2 42 46 +25 25.5
2 41.3 +25 79

188 1156

12.0 0.4

63631

~~102~~

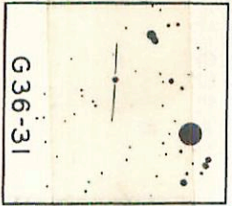
42296

9.44 +1.065 13.505
9.24 +1.074 10.314
9.36 +1.072 10.432
+1.067

9.36 +1.080 ③

+

G 36-31



Wdf 1132

WFT 225

2 41.4 -902

12.0 M ✓

607

$M_2 + 0.624$ ~~Algebra~~

-700

1.4

76

11.92 + 1.46 + 1.07 ①

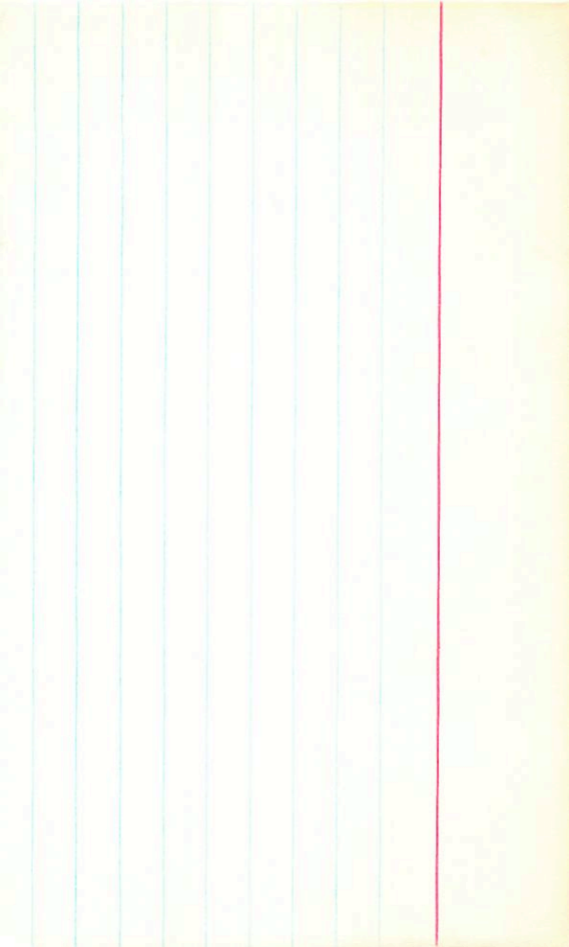
10.86 + 0.85 ②

v.0694 ± 005

+

~~WFT 225~~

.900 1420 Wdf
.963 142 LP

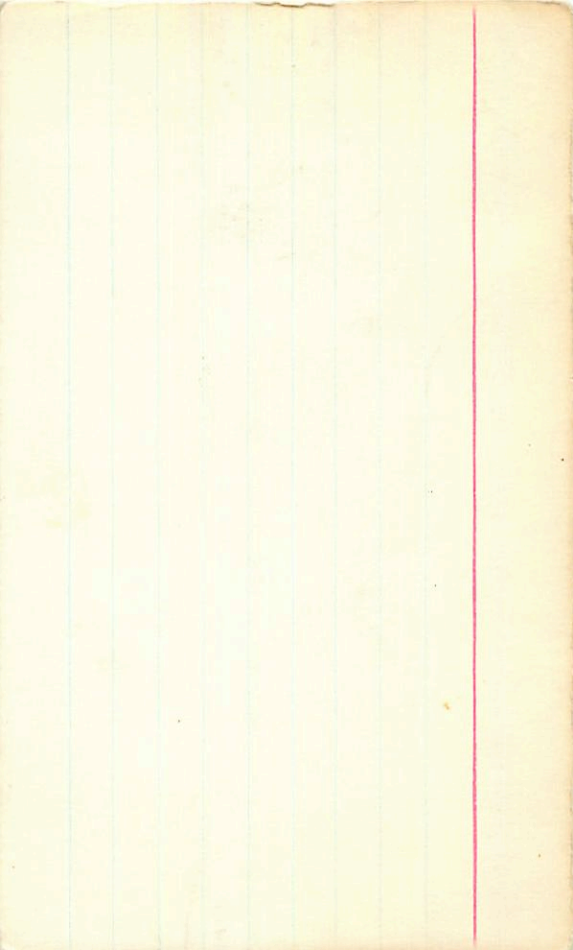


LFT 225 2 41.4 -9 01 12.0 M2 10:

W 1132

922
10.96 +0.87 27 Dec 68
10.76 +0.83 20 Sep 69
10.86 +0.85

11.92 +1.46 +1.07 7 Oct 70



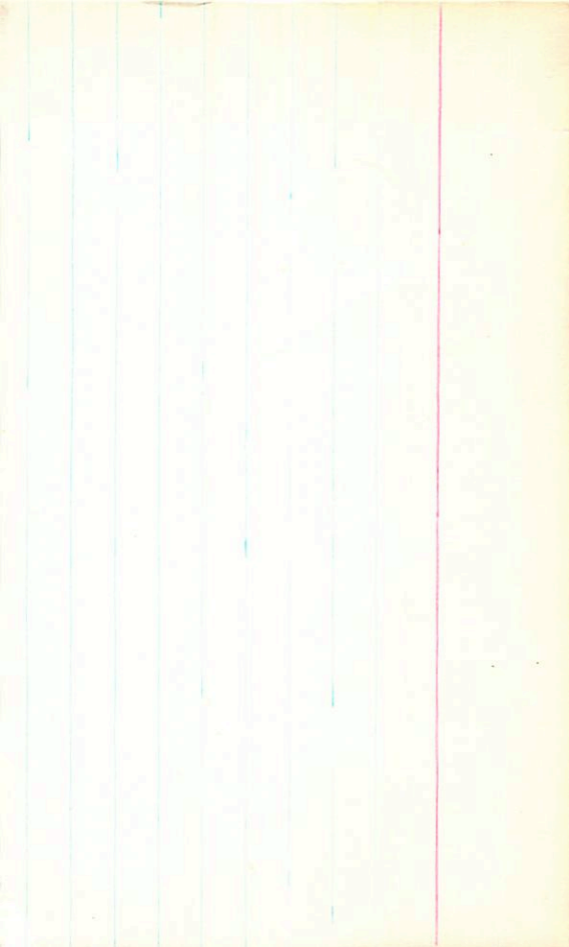
26 1946

G 74-43

2 45.5

241.32

15.5 x 3



BPM 47875 ✓
LFT 2285 ✓

L596-19

2 50 35 -26 07

2 49.5 -26 13

1821 1790 BPM
815 190 LP

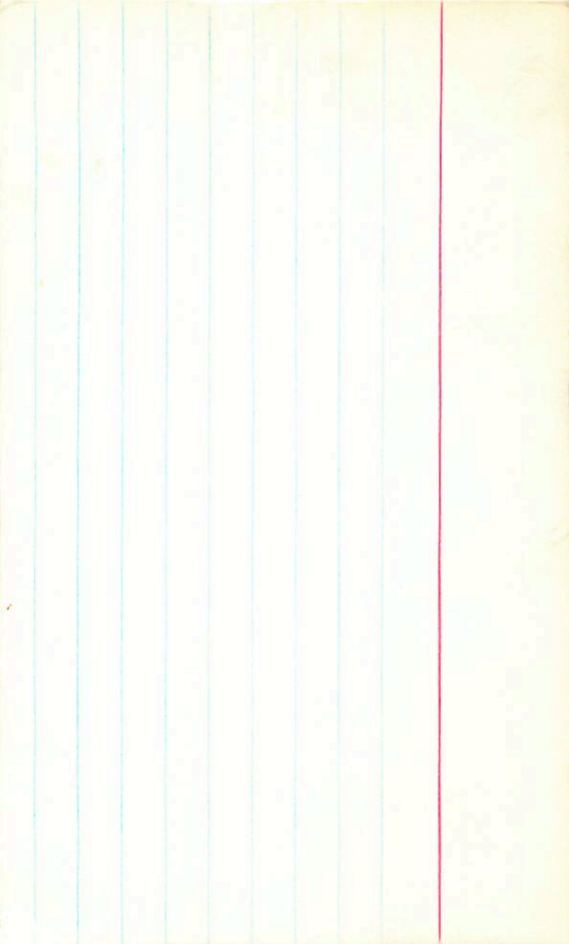
13.1 15.0 m

12.93 +0.87 20.80

12.95 +0.87 28.82

12.84 20.845 ②

X



X

LP771-35

2 51 44 -20 37.5

2 50.6 -20 43.5

13.0 15.3 m

0.706 36°

1981

13.12-70.91 27N174

13.11 40.95 28N177

13.12 40.93 (2)

+

LP 14-53

G-245-61

2 87.4 + 76 21

15.773

.78 120 G-
LP

GL3648

+725-680 GL

LFT 252/3

3

00.6

+61

33

+61⁰5B

4018757

VM

L.6.2+0.63+0.16 (2)

G246-22

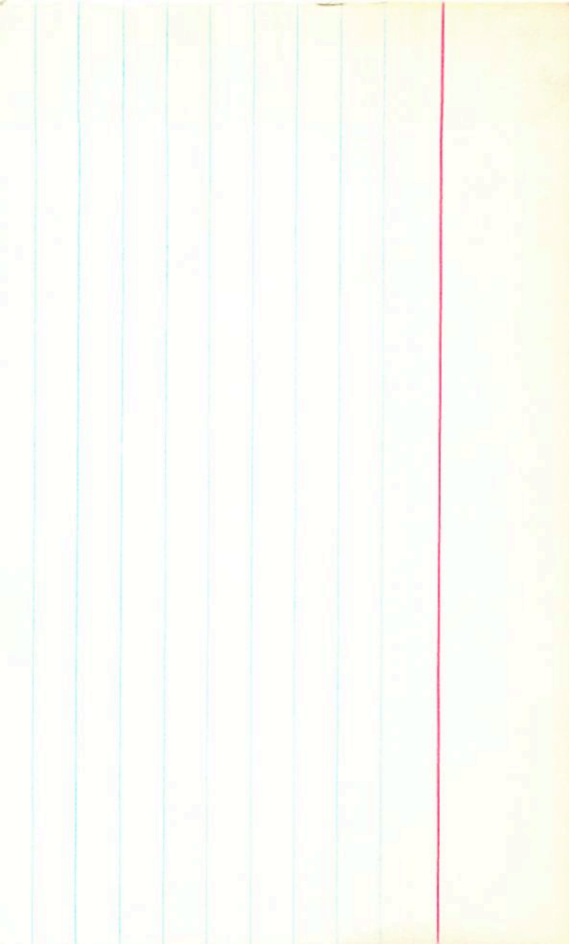
27

(35)

G4V -6.8

266''

13.3



R020364/365

LIT 240

2 52.6 + 55 14

11.8 MI

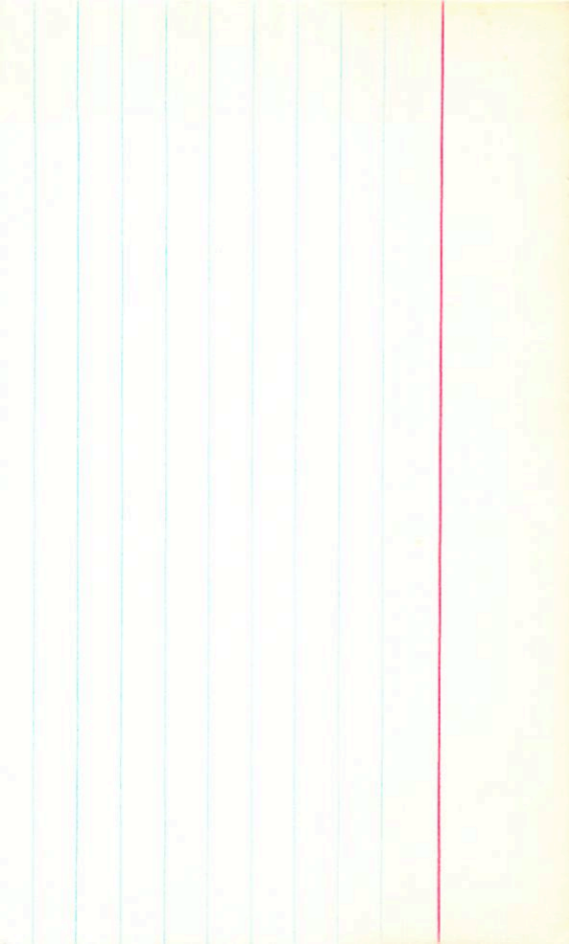
A364

12.3 }
15.5 }

(18")

G174-19/20

C.F.S 123



Pos 341

LFT 254

3 02.7

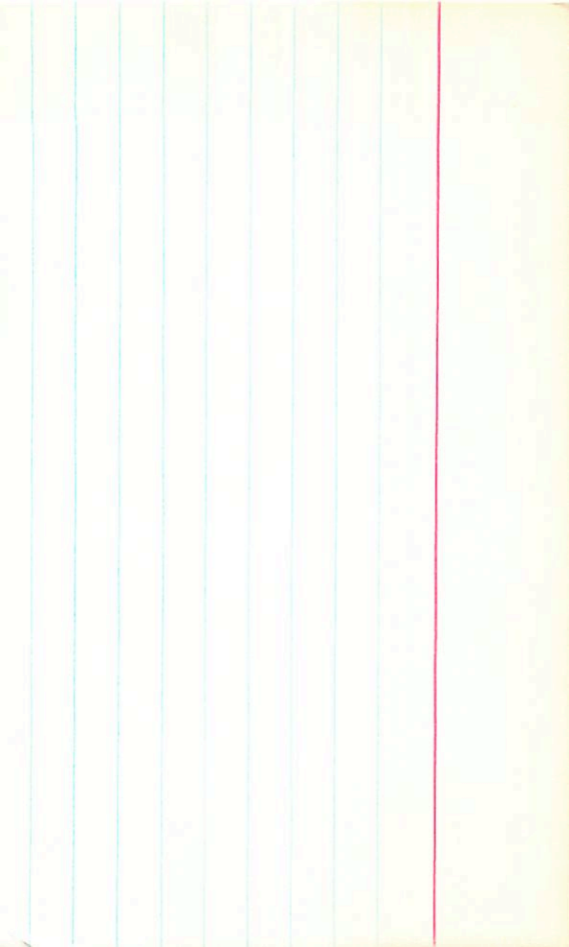
+ 50 52

14.2 +4

.94 128 G-

.90 126 Rom

6174-31



Cin 20-207

LFT255

3 03.F +1 47

+10543

1.605

V91

1235

~~MOY -300~~

9.10 +1.35 +1240

8.30 +0.625

.05436

of

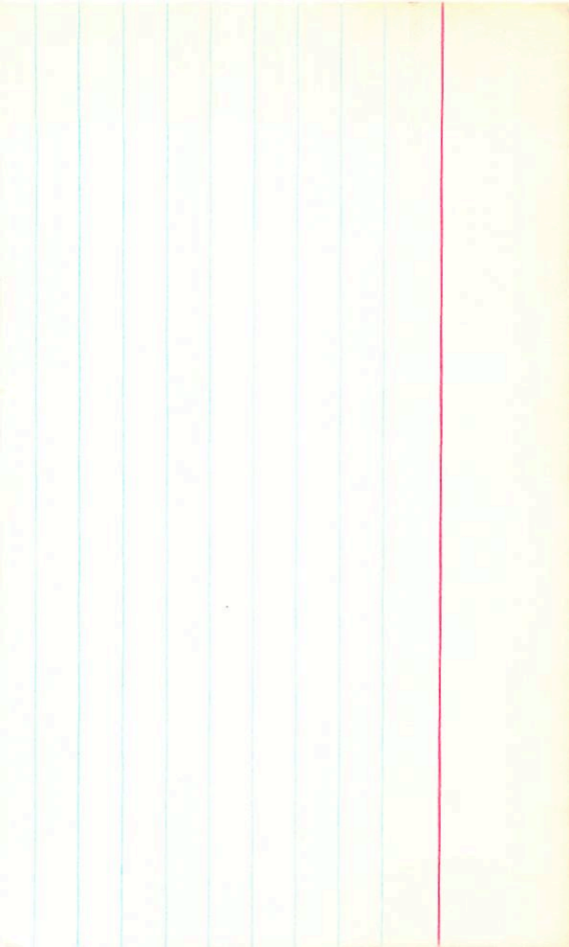
AD14305

X

+340-885 Cin

+400-950 G-

+340-980 Yale



GL3741

-200-755 GL

1.04 1980 C

LFT257

3 05.5 +26 09

+250495

8.10 +0.45 -0.24 (2)

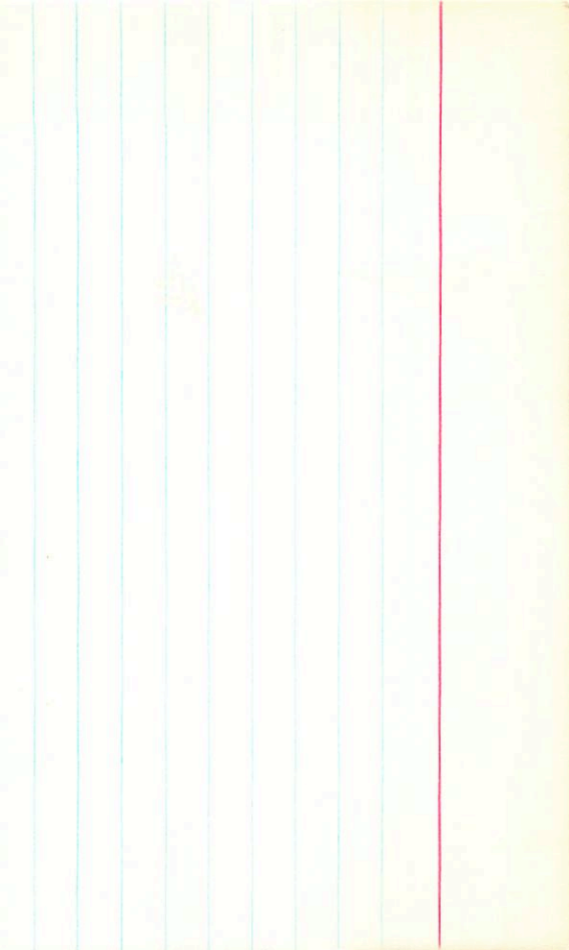
H019445

7.90 +0.22 (2)

.021 (29)

G3726

x



+1825-1055 G
+1835-1040 TT
LP

LP 31-60

3

05.4

+73 36

16.3 +13

G 221-5

1070 (20)