

$\rightarrow 12 \quad 31 \quad 08 \quad -26 \quad 01 \quad \approx \quad 0.98$
 853-5 12 29.8 -25 53 13.0 15.0 m

Done

○

1 mag 75^{40" CT} 1349 +1.64 +1.135

2573
 2573
 0.00

✓

12.30 +1.085^{40" CT} 25 Apr 75
 12.27 +1.03 26 Apr 75
12.26 +1.06

W 06/417
~~G 200713~~

LFT919

+402636

G12-39

.666 (23)

12 30 00 +9 57

12 29.8 +9 06

120.3

9:78 +1.40 +1.21 (2)

8.77 +0.715 (2)

8.00

7.28

(3) .93 225°
.84 231 (avg)

X

-712 +522 W

-450 M

βCD_m

-705 +285 βL

LFT 924

12 31.4 441 38

GL 17127

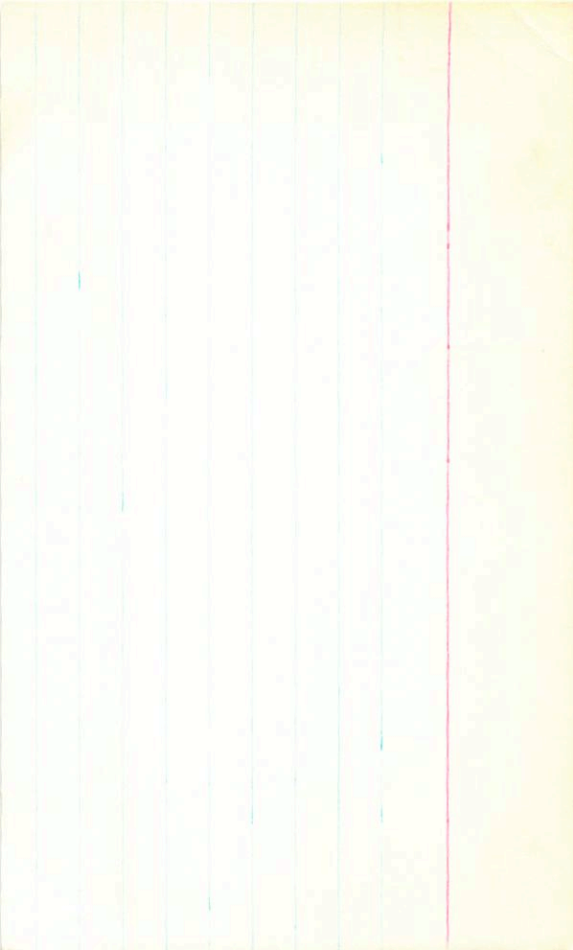
4.26 +0.59 +0.04 (2)

HR4745
10935

.109 (27)

60%

4.02 +0.21 std



Imms

.718 196 BPM

-60 -690 Imms
-110 -705 Cape
-25 -710 BPM

LFT926

12 33.3 -45 89

-4507972

6FS10125

BPM3051

071 (17)

-124
-207
0.95
+30

11.09 +1.44 +1.11 ①

10.06 +0.92 ③

2404 X -73 -704 CPT
-110 -705 CP8

175 277 6

G232-68

12

31.4

+73

00

15.2 +3

HP39-152

BMW765

.838 2650

LFT928

12 33.6 -76 41

L38-5

11.07
~~11.08~~ +126 +109 (2)

10.20 +0.60 (3)

-897 -099 CH

2605

-3400

-100

8.8

-106

✓

→ 12 36 36 -9 21 ~~5~~ 0.77

675-20 12 35.3 -9 13 13.8 15.3 mm

sy

25M

to

13.30 + 1215 18 July 77

s

✓

E (1)

0.812700

HP 995-245 12 38.9 +8 46 154m

195 2556

R199-35 12 41.7 +51 20 16.1 +2

LP 556-3

12

41.8

+4

38.1

14.1

15.7 m

0.740 120

NOTE

✓ 1 (RT) 12 37 33 -4 11

Q-13-51 12 36.2 -4 03 15.2 73

→ 1 2466

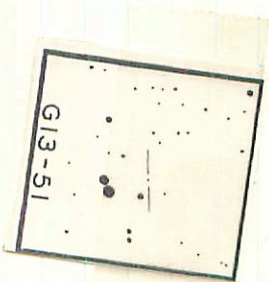
→ 09 -190 TT

³ 12.42 +1.59 +127①

0.049 (20) 400

12.18 +1.23 217476

S422-24



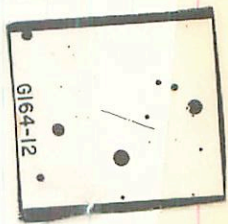
172 41 26 +33 50.5

12 40.2 +33 59 16.4 43

173 267 G

G164-12

LP 267-142



G164-12

171 2286

12 42 30 + 00 12

G-60-27

12 41.2 + 60 20 16.1 + 3

NO

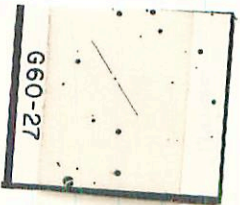
36" GT
NO 6m_{up} 75

13.59 + 0.59 - 0.045

13.22 + 1.555 18M_{up}

✓

~~6255-12~~ 124



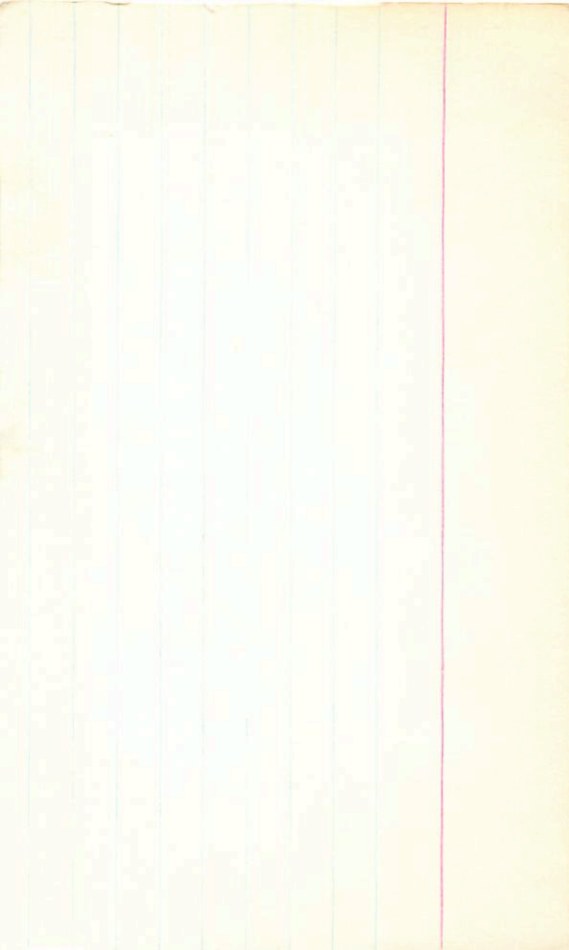
Nov 991
FF 991
G123-60

12 44.8 +46 54

.81 249 G
.70 257 000
13.7 43

174 3106

G199-420 12 47.4 +54 27 15.5 +3



Share #7

,821606

G177-4

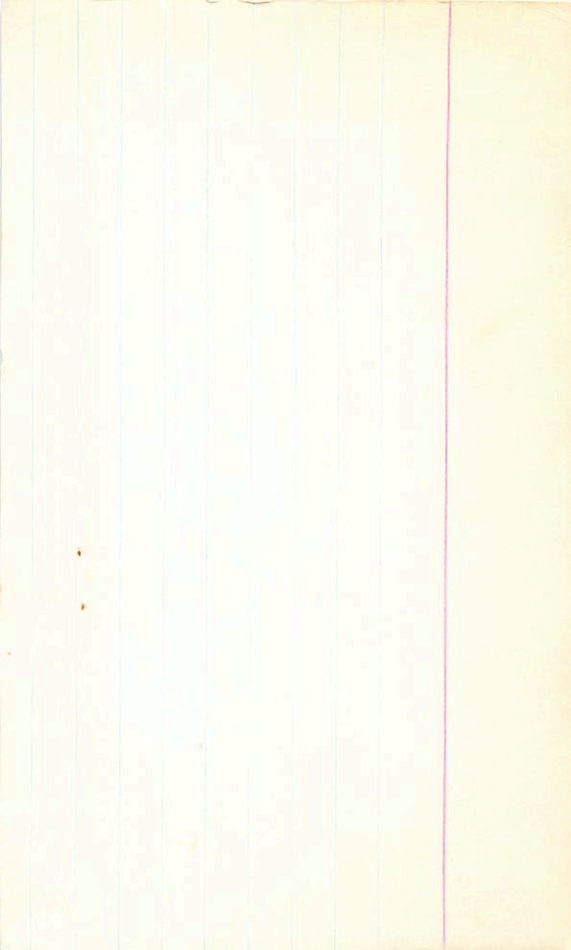
12

53.7

+51

12

16.0-73



Woynd

LIT 962

12 38.1 +5

-913 +234 Stem Woynd
 -920 +215 OPM
 -990 +320 G
 -920 +255 H

13.37 +175 +103 Stem

13.34 +173 +122 ①

11.80 +1435 ②

+234 H

-912

+234 H

-913

~~660-55~~

660-55

Van

.160 ⑩ tubes sp.0.

.121 ⑩ STAND

.105 5005 Spud

.130

X

W04938
LFT 548

RT 12 46 47 + 9 48.5

.712736
50270004

12 48.5 + 9 86 15.4 + 2

G60-33

-767 ~~188~~ π
0.027 ± 0.05 gms

13.96 + 1.58 - ①

12.75 + 1.165 21 Mar 76

✓
Dob

0.4



BPM3742

RF

13 08 19

-42

02

LF1973

13

06.9

-41

54

148 m

L400-35



.265 177 Bpm

12.76 1070 2mm76

100%

+

1205
1301



37421

PEEL

1
2
3
4
5
6
7
8
9
10