

QUMA

-950-54066

LFT659

9 29.5 +51 54

GCN157

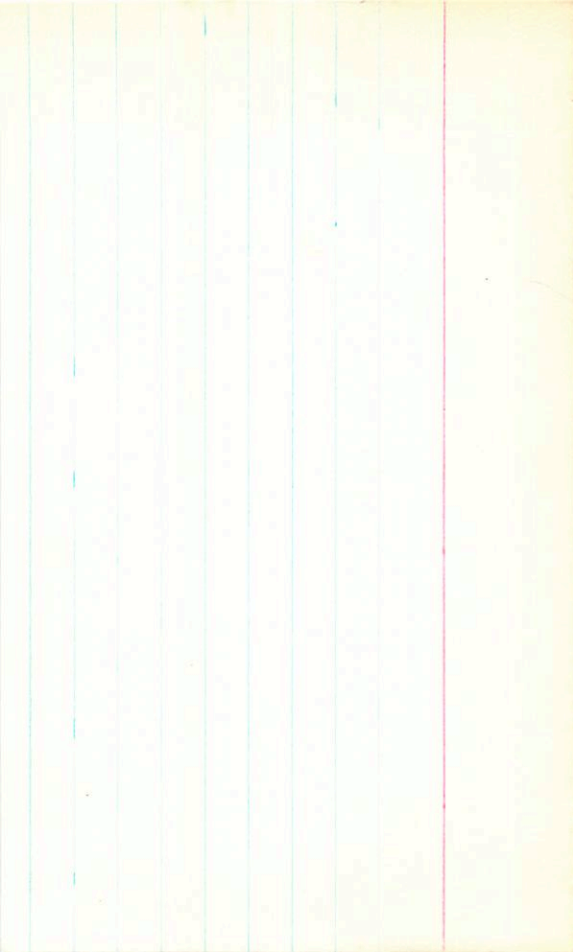
F6 R +15.4

3.18 +0.46 +0.02 (2)

3.05 +0.165 (2)

1052 (34)

(148)



BPMS2719

+155 -1050 RPM

LFT661

9 33.7

-21 2.5

L678-39

10.52 +1.58 +1.18 ①

F1

1457

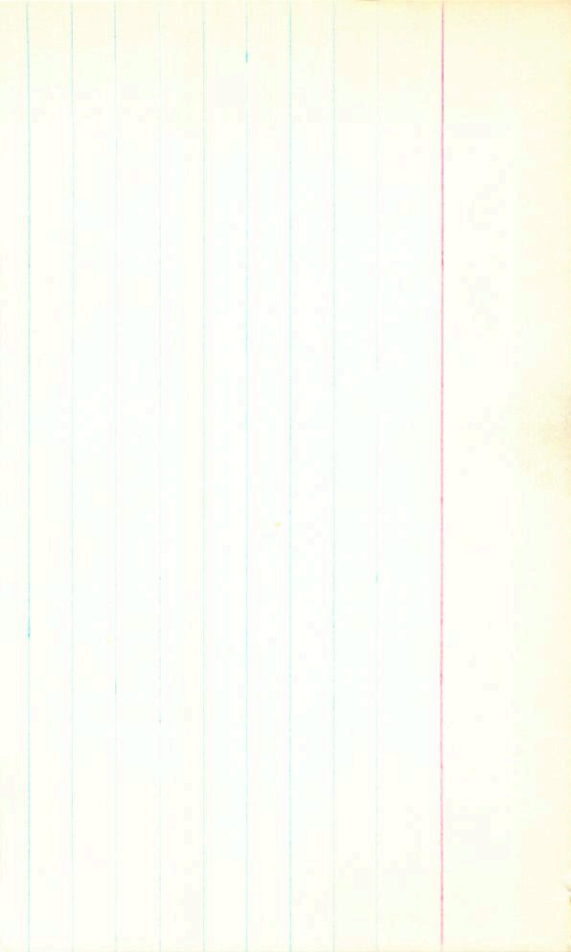
9.75 +1.00 ③

.117 ⑤

X

1.182

1457 -1050 RPM



BPM 73 594

-1410+250 RPM

L-FH-8

9

41.6

-17

35

L-74-051

L-750-42

13.15 - -

+52:

11.95 +0.98 (3)

150

→ 9 42 21 -17 39.5 1.43

LFT 678 9 41.6 -17 35 14.7 m

750-47
751-101

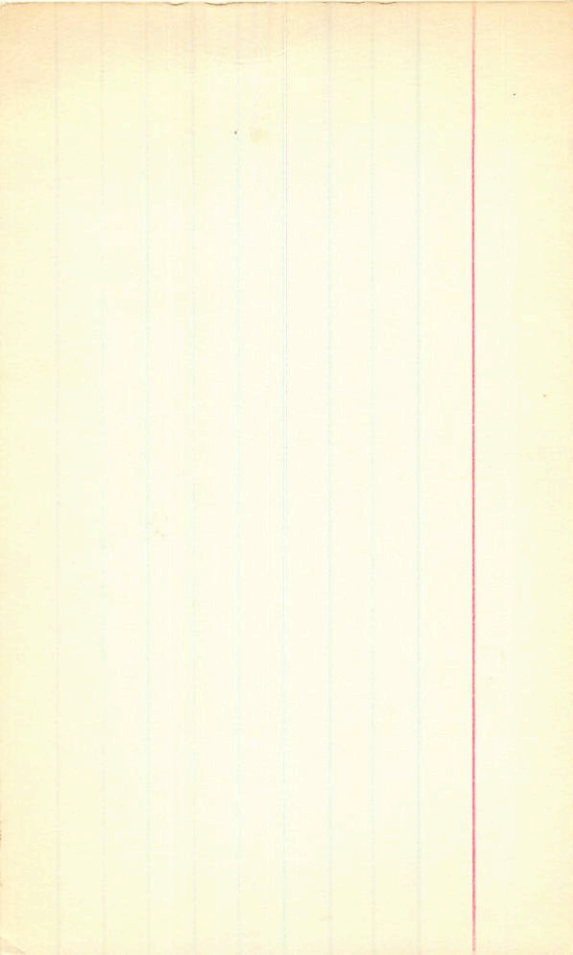
do ✓

~~→ 9 43 21 -18 04.5~~

~~9 42.6 -18 00 14.3 k 1.58~~

~~LFT 681
750-52
751-60~~

~~Done ✓ do~~



Gm 7603952

LFT 679

9 41.7 +76 17

+60 -985 Gm
+120 -995 -
+130 -1060 G-

G-252-44

10.60 +140 +1.10 ①

.040 ②

-3;

9.50 +0.865 ①

-1560 -150 BPM

LF4681

9 42.6 -18 00

✓ 25-0561

1260 +1.59 +1.28 (3)

+9:

1092 +1.27 (2)

(15)



BPM 5477

LFT 670

h.100-115

-60 +1110 BPM

9 42.0 -68 41

12.78 +173 +122 ①

11.10 +1415 ②

-21:

(46)

LFT681

9 43 04 = 18 04

14.3 k

"
k = 1.58

12.68 + 1.58 + 1.30 5 man

12.71 + 1.58 + 1.25 3 man

12.70 + 1.58 + 1.28

12.92 + 0.62 + 0.36 6 man

Red
Blue

10.94 + 1.26 16 man

Red ✓

LF T 681

L 750-52

2
E

Wolf 335

hFT641

G117-61

9 59 28 +32 26.5

9 57.9 +32 83

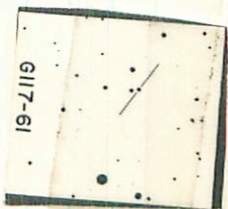
- 955-695 Wood
- 1025-665 G

1193+142 H.30①

1001 Ⓟ

153

61-7119



G-613557

L-FT685

-1102271

G-16180

.076 (35)

+1070-1440 GC

9 487 -12 05

10.10 +1.48 +1.15 ①

9.01 + 0.78 ③

+61

9.6
9.6

152

-1075 +670 BPM
-1050 +610 J

LRT664 9 55.1 -30 10

L535-3 11.43 +1.49 +1.08 0
068 (19) +60: 10.10 +1.07 2

154

G-13987

-1350 -515 GC

L-17696

10 09.3 +79 42

+8001725

6.60 + 1.38 + 1.28 sta

G-1964

AMO -27.0 5.74 + 0.60 sta

.222 40

150

Insulin

LFT 223

L1912-9

G-236-34

10

32.0

+69

43

13.3 +3

-1690 -615 Imp
-1715 -660 C

154

Longton

LFT 732

-1530	-140	Long
-1420	-340	G
1440	-360	11
388	+37	52
10		

1.47 256

L1545-14

1459-360 J

1295 + 168 + 118

G146-54

055 22

092 #4 Wick

159



BPM34864

-1040 + 420 BPM

LF707

10 12.9 -46 55

L820-124

1346 + 171 + 1340

12.00 + 1225 (4)

-1;

(157)

