

Abu (107) → 8.56 + 0.175 (1)

1364 ✓ ✓ ✓

14 31

-44 19.5

71 " 864 + 56 - 23 (4)

24916 (646)

1416 ~~Ch...~~

2157 56279
2143 6"
2149

13 B

478 + 0.39 (4)

477 + 0.39

concub 388

5.34 + 1.07 + 94

534 - 74 1191 424 - 424
537 - 78 1194 424 - 424
536 - 74 1193 424 - 424
536 - 74 1193 424 - 424

248274
25 " "
26 " "

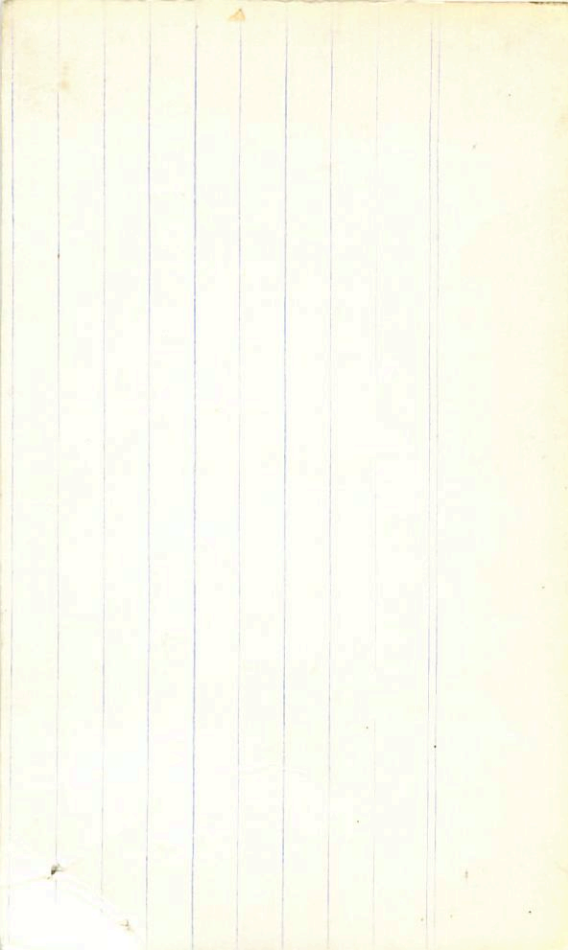
526 646 443 487 2641 (3)

871 - 363 508
870 - 385 485
470 - 352 118

248274
25 " "
26

856 + 0.175 (1)
853 + 0.175 (2)
854 + 0.175 (3)

870 354 147 147 147 (3)



27588 4 18 20 -44 20 5.1 N2

(1864)

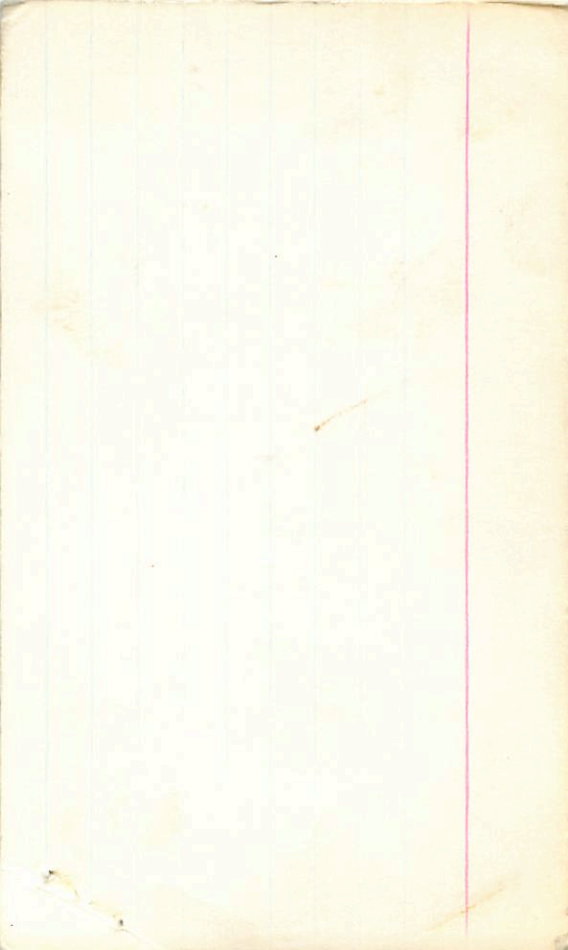
5.34 +1.07 +0.98 2 3/4
5.33 +1.08 +0.95 C
5.36 +1.065 +0.89 3 Jan 72
5.34 +1.075 +0.94

(477) 385 low
4.78 +0.39 20 Jan 75
4.75 +0.395 22 Mar 74
4.76 +0.38 30 Jun 74
4.81 +0.395 1 Dec 71
~~4.81~~ 20 Feb 71
4.78 +0.39

NLS 5.34

NLS

5.35
~~8.56~~
8.518
+0.175 22 Nov 74



343
243
143
510

B64B 04 18 40 -44

19 } 5.34
70" }
114" } 8.67

2227 REI

2.563

(B) 36 + 36 (B) of B

8.69-350 +892 -474 310075
8.70-349 +881 -422 1100075
8.71-369 +884 -424 1200075
9.70-356 985 -435 (B)

8.56
8.57
8.47
8.40
8.43
+0.17 - 220075
+0.16 - 270075
+0.21 - 360075
+0.18 - 300075
+0.18 4

No 45 in E2 (No 46 in E2 12.80 + 0.75 + 0.465)?

HR1364 4 17.7 -44 23 5.310

5.32 + 1.10 + 0.92 41 cent 77
5.34 + 1.08 + 0.95 9 cent ✓ 9.07 60

A 5.33 + 1.08 (2.16) large 5.33 + 1.08 + 0.95 1140 709

5.35 + 1.06 + 0.98 14 cent 66

5.33 + 1.08 + 0.92 16 cent

5.34 + 1.08 + 0.98

8.67 + 0.53 + 0.055 9 cent ✓

B 8.67 + 0.555 + 0.045 14 cent

8.67 + 0.55 + 0.04 16 ✓

8.67 + 0.55 + 0.05 S = +0.5

8.70 + 0.555 + 0.04 41 cent 24
23 24 44

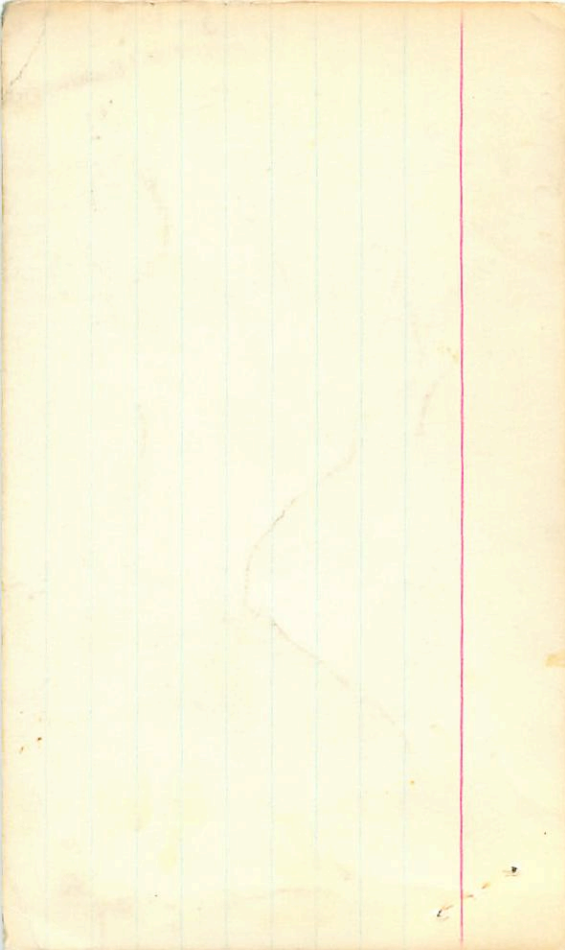
8.68 + 0.545 - 0.02

8.69 + 0.57 - 0.04 24 cent 67 ✓

8.64 + 0.57 - 0.10 30 cent 67

8.69 + 0.56 - 0.03

↑



1366 / 04 20 16 -00 09

5.77

6.08 112

5.85 + 132 400 art

13.7: +0.46: -0.02 (2)

~~13.7~~

-414 27 Dec 77

-411 25 "

-412

3

5.85 + 78 1401

5.85 + 80 1357

5.85 + 79 1359

7.52

7.49

7.52

5.16

5.20

5.18

⑧ 13.67 +0.435 -0.01 27 Jan 74

[13.50 +0.505 -0.03 25 Jan 74]

13.61 +0.165 3 Dec 73

12.95 + 3.10 5.18 4.37

5.11 4.34

5.18 +0.505 4 Jan 74

~~5.18 +0.50~~ (1)

5.20 +0.16, 3 Dec 73

~~5.20 +0.461 4 Jan 74~~

5.20 + 1.495 (3)

Star -07

1373

4 21 50 +17 29 376 H08

✓

210

3.76 131 1179 -482 14 Dec 79 29"

3.78 -125 1161 -452 16 Dec 79 29"

3.77 -130 1170 -474 27" " "

~~3.78 131 1179 -482~~

3.77 1170 1170 -470 12h

1373

3.77 1170 1170 -470 12h
3.78 1170 1170 -470 12h
3.79 1170 1170 -470 12h

3.78

1373

1373

1386

04 22 48 -35 36 6.35 65

✓
RR

6.39 +26 1353 -493 27 Nov 81

6.38 +25 1352 -503 27 Nov 77 40"

6.42 +32 1350 -478 30 " "

6.40 +26 1351 -498

8.22 +416 3283

753 ✓
584 400

②

5.79 +0408 6.27 77

5.50 +0408 16 Nov 78

5.85 +408

① ②

1395 04 21 36 -63 26 5.18 67 IV

✓

$$5.23 - 131 \quad 1115 - 460 \quad 9 \text{ Dec } 77$$

$$5.27 - 148 \quad 1118 - 457 \quad 10 \text{ "}$$

$$5.28 - 140 \quad 1116 - 458$$

577 372

$$4.86 + 300$$

$$4.75 + 325 \quad 30 \text{ Dec } 77$$

$$4.86 + 345 \quad 17 \text{ Dec } 77 \text{ Stubs}$$

$$4.84 + 308 \quad 26 \text{ Dec } 75$$

$$4.88 + 306 \text{ (2)}$$



$$\begin{array}{r} 4.86 + 301 \\ \hline 4.84 \quad 305 \text{ Dec } 78 \\ \hline 4.85 \quad 304 \text{ Dec } 72 \end{array}$$

$$5.25 + 045 + 0.635 \quad 3 \text{ Jan}$$

$$7.22 + 0.37 \quad 22 \text{ Dec } 77$$

$$4.86 \quad 301$$

1381 9581 ✓
04 25 18 414 40 481 68 III

469-123 1114-456 272620
470-126 1116-448 24 "
470-124 1115-452

373 1864

420 1338 A
340

1400 04 25 49 +02 03 6.24 NI II

✓ R

6.23 -57 1246 -481 27 Dec 77
 6.24 $\frac{60}{6.24} = 9.615$ 1246 -476 29 11
 6.24 $\frac{60}{6.24} = 9.615$ 1247 -476 19 8

8.05 +0.35 10 Jan 80

8.05 +0.35 19 Dec 82

8.08 +0.35 13 Jan 83

8.08 +0.35 19 3

19.3
6.4

570 370

574 380
540 345
510 325

5.80 +0.375 25 Dec 79

5.73 +0.365 30 Dec 71

5.16 +0.37 20 Jan 72

5.14 +0.343 14 Jan 79

5.14 +0.359 13

11/11/11

(R) (X)

1405 ✓

04 23 45 -57 07

6.237 " 60
6.1-37

R ✓

630 309 928 -474 2135 30 Dec 71
630 303 919 -465 2130 29 Dec 71

R

A8 630 309 929 -474 9 Dec 77
630 306 914 -472 10 "
630 307 923 -472 2132 (4)

901 193

5.55

+0.208 3 Jun 75

6.03

+0.799 26 Jun 75

6.00

+0.204

(2xP) (AD)

1407

(A)

04

27 07

+16

88

510

III

✓

$$\begin{array}{r}
 456 - 38 \\
 \hline
 418 \\
 456 - 38 \\
 \hline
 418 \\
 456 - 38 \\
 \hline
 418
 \end{array}$$

444 + 406 A
 733 + 41 256

ΣTan

1409 ✓ 4 27 25 +19 08 3.54 +1.02

70 ✓ 356 -125 1221 -130 142279 24"

3.55 703 1202 -455 162279 24"

3.56 -125 1224 -423 27" . . "

356 -114 1216 -483

604 484 456

1320 412 462

1421 04 27 35 -15 30 5.95 5.14

✓

✓ R NR

745 600 1441

136

246

5.55 + 13 1369 - 466 88027

5.55 + 284 1360 - 471 9" 5.39

5.45 + 220 1365 - 468 5.40

+374 20 Dec 78
Dec 77

+0.396 7 Dec 77

5.36 +0.415 30 Dec 71

5.43

+0.425 (29) 5 Dec 71

5.96 + 120 + 1.30 3 Jan 71

163

R

5.45 + 0.387 22 Jan 70 5.4

5.45 + 0.374 20 Dec 78

5.40 + 0.396 7 Dec 77 246

5.41 + 0.385 (3)

Q1T am

1411 ✓ 4 2.7 25 46 07 385 756

210

✓ 3.86 -152 1161 -480 17 Dec 79 244

3.87 -135 1140 -455 16 Dec 79 244

3.87 -150 1155 -425 20 " "

~~3.87 -745 1148 296~~

3.96 -117 1152 451

3.95 + 315

250

570 405 484

121 125 20

319

1413 / 04 26 50 - + 01 49 55 59 69 77

614 + 102 = 714

615 - 99 = 516
615 - 98 = 517

1137 - 462 = 675

1138 - 446 = 692

615 - 107 = 508

615 - 101 = 514

254 + 384 = 638

544 + 343 = 887
570 + 335 = 905
567 + 344 = 911

567 + 340 = 907

567 + 340 = 907

567 + 340 = 907

578 + 340 = 918

574 + 341 = 915

more

198

→

✓

✓ ✓

5.94 + 0.13

1418

4 26 22 47 00 1.09 F02

~~3058~~

2545c

12h 3h 1 10c 11h

2.44 ✓

450

6.6

6.09 - 355 981 - 426 716 76

6.09 - 388 881 - 446 12.1.5

6.09 - 352 881 - 426 ②

6.09

high 951 - 215
0.1

1425 04 28 46 +10 13 64068 III

$$6.50 + 1.03 + 0.80 \textcircled{2}$$

⑦ ✓ R/R

$$6.50 \quad 86$$

$$1168$$

$$-71$$

$$6.47$$

$$-84$$

$$6.48$$

$$-84$$

$$6.49$$

$$-446 \quad 3284$$

$$\textcircled{1129}$$

$$1144$$

$$-84$$

$$6.48$$

$$-84$$

$$6.49$$

$$-84$$

$$-451 \quad 272277$$

$$1157$$

$$-84$$

$$6.49$$

$$-84$$

$$6.49$$

$$-84$$

$$6.49$$

$$-455 \quad 29 \quad 9$$

$$516$$

$$-451$$

$$6.06 + 402$$

$$6.03 + 29.6$$

$$6.03 + 29.6$$

$$6.03 + 29.6$$

$$6.03 + 29.6$$

$$6.09 + 0.361 \quad 4 \text{ Jan } 78$$

$$1904 \quad 607$$

$$6.04 + 0.365 \quad 20 \text{ Dec } 72$$

$$6.00 + 0.36 \quad 20 \text{ Dec } 71$$

$$6.10 + 0.359 \quad 5 \text{ Dec } 77$$

$$6.06 + 0.361 \quad 4$$

$$6.06 + 0.361 \quad 4$$

$$6.06 + 0.361 \quad 4$$

323

365

810

200

200

200

200

200

1426 04 19 21 - 80 16 568 100 P

✓ R R

245
554

5.64 -201 1064 -413 10647

5.20 -200 1067 -397 11

5.70 -200 1068 -405 262 +331

514 328 ✓

10/20
7.20 +355 13/20

(S) (S) (S)

266 1340
525 269

5.24
5.24

5.24
5.24

5.24
5.24

5.24
5.24

5.24
5.24

5.24
5.24

5.24
5.24

5.24
5.24

5.24
5.24

5.24 265 208
5.24 279 386

40319

5.20

1481 04 29 06 -13 39 6.23 05

✓

6.23-105 1153-445 2700029
6.23-101 1150-434 1170007

R ✓

~~6.23-119 1185-468 11''~~
6.23-103 1152-490 ②

①

②

282
8.17 + 385 } 13pts

~~8.17 + 385
8.06 + 355 } 14pts~~

5.70 + 0.330 = 5.070
5.77 + 1.33 = 7.100
4.75 + 0.330 = 4.420

~~5.74 316 306
5.74 315
5.70 330
5.70 324~~

1433 04 28 38 -46 34 6.15 9.08

R √ 6.15 -79 1234 -474 2.8 reverse

R 6.15 -79 1246 -472 11/11/27
6.16 -79 1242 -457 23 (501 + 325) 13
6.15 -72 1240 -473 ③ (496 + 356) 13

804/387

564/314

329

511 331

518 322

567 325

515 324 ②

5.57

5.67

5.62

+0.343 (collect)

+0.325 (div 2)

1334

332

351

~~Handwritten scribbles and circled marks~~

1435 04 27 30 -62 34 5.78 120

13^m 10^u

R ✓

R

5.75 -118 1173 -462 5.78 77

5.74 -122 1174 -461 10^u 317

5.78 -120 1174 -462

545 ✓
425 ✓

223 +0.378 240

535 317

5.77

5.25 +0.327 ~~7.65~~

5.22 +0.378 21.5 77

5.20 +0.327

⊕

1437 04 30 42 -00 05 491 143 II - II

✓

4.91 + 79 1435 - 573 27 Dec 77

4.91 + 75 1442 - 584 29⁴

4.91 / 4.91 + 77 1438 - 574

805 ✓ 668 326
515 (910) (591) 165

4.36 + 0.485 km

1439 04 29 50 -35 42 5.95 100 333
13" 30" 335

R✓

542 313
503 325
319

5.45 -117
5.47 -116
5.46 -116
1160 -505 11 Dec 77
1162 -525 23"
1161 -515 +390

602
5.52 +0.342 20178
5.48 +0.34 212075
5.50 +0.341 ②

7.26 375 10
7.91 390 13
7.85 385
518 412

1446. 04 32 33 +09 22 6.02 6.02 6.02

V R R

6.03 -23 1158 -474 6 Jan 83

6.02 -57 1132 -474 29 Dec 17

6.04 -62 1132 -452 30 "

6.03 -64 1140 -476 (3)

171 73

[284 + 0.416] 345

5.11 345

(D) (R) (R)

5.41 +13674 Jan 75

5.52 +13603 Jan 75

5.56 -1360

1447 04 32 17 -10 50 6.24 100

✓
6.05 + 117 1419 - 575 - 292078

6.06 + 107 1419 - 575 - 102077

6.07 + 102 - 1435 - 566 - 272077 40⁰⁰

6.06 + 109
+ 109
1424 - 575 - 3(272 + 526) 17/100

733 ✓

634475

5.34 + 186
5.35 + 1487
5.36 + 1488
5.36 - 10.503 7/100
5.35 + 1487 20/100
5.35 + 1496

(37)

(17)

1450 64 33 07 -6 25 9- 584
✓
✓
✓

6.10 4112 1492-423 3843
6.07 4107 1456-487 1070007
6.09 4103 5102 984-486 27 nov 77 40"
6.09 7108 1494-475 ② 522 40.540 1 Feb
469

134 729 537 489
✓
✓
486

5.35 + 0.485 262075
5.48 784.04 24 Jan 75
5.48 4186

⊕

1452

04 33 05

-09 01 5.27 R4 III

5.26 +164 182

-519 27 Jan 77

5.24 +111

1533

-513 10 Nov 77

5.27 +154

1545

-580 27 Nov 77

5.25 +159

1539

-521 (B)

R R *Proprietor*

⁷⁵
~~10.5~~ 10.5

+0.528 7 Dec 77

4.51

4.50

~~10.528~~

4.50

1450 04 32 37 -29 48 4.50 9.06
 452 -127 1111 -486 2.094 3.514
 454 -147 1145 -465 2104 4.548
 4.57 -132 1107 -441 2.113 2.588

4.52 -130 1110 -454 10.44277
 4.50 -150 1112 -499 11.114
 4.51 -130 1114 -460 2.1

4.57 375 400 ✓
 4.56 375 ✓
 4.57 375 ✓
 4.58 375 ✓
 4.59 375 ✓
 4.60 375 ✓
 4.61 375 ✓
 4.62 375 ✓
 4.63 375 ✓
 4.64 375 ✓
 4.65 375 ✓
 4.66 375 ✓
 4.67 375 ✓
 4.68 375 ✓
 4.69 375 ✓
 4.70 375 ✓
 4.71 375 ✓
 4.72 375 ✓
 4.73 375 ✓
 4.74 375 ✓
 4.75 375 ✓
 4.76 375 ✓
 4.77 375 ✓
 4.78 375 ✓
 4.79 375 ✓
 4.80 375 ✓
 4.81 375 ✓
 4.82 375 ✓
 4.83 375 ✓
 4.84 375 ✓
 4.85 375 ✓
 4.86 375 ✓
 4.87 375 ✓
 4.88 375 ✓
 4.89 375 ✓
 4.90 375 ✓
 4.91 375 ✓
 4.92 375 ✓
 4.93 375 ✓
 4.94 375 ✓
 4.95 375 ✓
 4.96 375 ✓
 4.97 375 ✓
 4.98 375 ✓
 4.99 375 ✓
 5.00 375 ✓

Handwritten signature or scribble.

4.12 46.3708
 4.13 46.3708
 4.14 46.3708
 4.15 46.3708
 4.16 46.3708
 4.17 46.3708
 4.18 46.3708
 4.19 46.3708
 4.20 46.3708
 4.21 46.3708
 4.22 46.3708
 4.23 46.3708
 4.24 46.3708
 4.25 46.3708
 4.26 46.3708
 4.27 46.3708
 4.28 46.3708
 4.29 46.3708
 4.30 46.3708
 4.31 46.3708
 4.32 46.3708
 4.33 46.3708
 4.34 46.3708
 4.35 46.3708
 4.36 46.3708
 4.37 46.3708
 4.38 46.3708
 4.39 46.3708
 4.40 46.3708
 4.41 46.3708
 4.42 46.3708
 4.43 46.3708
 4.44 46.3708
 4.45 46.3708
 4.46 46.3708
 4.47 46.3708
 4.48 46.3708
 4.49 46.3708
 4.50 46.3708
 4.51 46.3708
 4.52 46.3708
 4.53 46.3708
 4.54 46.3708
 4.55 46.3708
 4.56 46.3708
 4.57 46.3708
 4.58 46.3708
 4.59 46.3708
 4.60 46.3708
 4.61 46.3708
 4.62 46.3708
 4.63 46.3708
 4.64 46.3708
 4.65 46.3708
 4.66 46.3708
 4.67 46.3708
 4.68 46.3708
 4.69 46.3708
 4.70 46.3708
 4.71 46.3708
 4.72 46.3708
 4.73 46.3708
 4.74 46.3708
 4.75 46.3708
 4.76 46.3708
 4.77 46.3708
 4.78 46.3708
 4.79 46.3708
 4.80 46.3708
 4.81 46.3708
 4.82 46.3708
 4.83 46.3708
 4.84 46.3708
 4.85 46.3708
 4.86 46.3708
 4.87 46.3708
 4.88 46.3708
 4.89 46.3708
 4.90 46.3708
 4.91 46.3708
 4.92 46.3708
 4.93 46.3708
 4.94 46.3708
 4.95 46.3708
 4.96 46.3708
 4.97 46.3708
 4.98 46.3708
 4.99 46.3708
 5.00 46.3708

2Taw

1457

4

35

55

714

25

0.86 98.0

453

[3.23

271

1961

7]

1724216

0.84 +237 1558-515

0.973 975 0.392 ①

0.955 0.614 0.373

News

0.85 230 1543-507 ②

106 596 596 ←

1457 ✓ 4 34 45 +16 28 0.86 +1.53

1457

L. T. A. W.

4 34 50

+16

28 0.96

RT III

(A)

0.07 + 1687.1 A

0.56 + 225 1528 - 499
984 237 1889 - 505

611

[3.77 + 221.1419 - 0.9] + 2.0
[28.87 + 80]

1461R 04 34 00 -19 58 6.11 100

373.
354
350
371

\checkmark 6.12 $\frac{-16}{-20}$ 1394 -520 32849
 6.12 $\frac{-20}{-12}$ 1394 -508 102000
 6.14 $\frac{-12}{-16}$ 1376 -504 84000
 6.13 $\frac{-16}{-16}$ 1346 -511 (3)

5.58
 5.61 +0.321 70075
 5.60 +0.350 200000
 5.60 +0.359 (3)

8.01 +422 32849
 7.45 +0.403 190000
 5.63 353
 5.63 +334
 5.60 +350 200000
 5.62 +344
 5.62 357. 200000
 5.58 350
 5.60 +0.352 (3)

(R) (R) (R) (R) (R)

1464 ✓
04 34 40 -30 36 3.81 AD III

3.83 -141 1133 -476 10.8.77
3.14 -185 1145 -461 11'
3.14 -140 1138 -468 ②

577 392 ✓
✓

+0.32 136.6m
3.413 +11.3.13 35

King 326
34

1475

04 33 21 -62 52

5.86 100

311

8.5 321

323

R ✓

R

5.90 -107 1225 -491 242191 (30)

5.80 -107 1224 -494 96677

5.80 -109 1208 -478 10

5.80 = 107 1227 -499 (2) 616 367

10

5.76 342 32453

4.3 8 323
4.3 2 301

1475
T

315

5.32 + 307

323

314

301

(R) (T) 525 301

5.31 + 0.337 9 6677

5.33 + 0.318 26 6677
5.32 + 328

461

1848 ✓ 04 37 08 -14 20 3.86 1024

Len 1.20

2" 1.5

3.78 -61 1254 -532 9.12-77

~~3.78~~ -72 1252 -537 10"
-64 1253 -535

383 655 499

~~3.78 + 0.385 30 Dec 71~~
~~3.78 + 0.385 30 Dec 71~~

491 + 0.385 30 Dec 71

strip + new 24 of 22, 0.07

+ 0.38 1366

3.41 + 0.355 35

3.35 - 2 10 1/2 ✓
3.35 ③ 3.5

+ 3.92 (Sum)

1487 04 35 16 - 14 24 5.44 141 14

Paul Johnson
 (N)
 R

497 339

5.17 + 10.4 + 0.24 = 15.81

287
 10.404
 10.404
 10.404

7.26 + 10.404 = 17.664

448.3341 (3)

8.52 (2) ←

(9)

5.48 - 81 - 1161 - 428
 5.47 - 79 - 1158 - 424
 5.48 - 80 - 1160 - 428

640
 712

5.0
 5.14
 4.51
 4.51
 4.51
 4.51
 4.51
 4.51

10.378
 10.378
 10.378
 10.378
 10.378
 10.378
 10.378
 10.378

8.08
 8.08
 8.08
 8.08
 8.08
 8.08
 8.08
 8.08

1487 64 38 37 - 01 06 618 120

296
296
296

R ✓

6.12 - 161 1130 - 453 81277

6.13 - 152 1129 - 446 110
6.12 - 157 1130 - 447 871

OR

809 + 341 = 1150
802 + 345 = 1147

~~1147~~

574 22

(R) 567 222
571 222

296

572 - 10.306 73657

571 - 10.252 22077

571 222
572 222

(3) 296

1995 04 39 10 -24 32 5.57 GC II

✓

R

$$\begin{array}{r}
 5.58 \\
 5.59 \\
 \hline
 5.54
 \end{array}$$

1025

$$\begin{array}{r}
 1032 \\
 \hline
 1028
 \end{array}$$

1025 -416 26.20077 40^d

1032 -400 10.11077

1028 [2.57 + 356] 32483

722.7

666 5.14 327

~~5.11~~

~~5.16~~

5.15

5.14

5.16

0.335 26.20077

³⁰⁴¹³
327

+ 0.332 7.11077

+ 1327 20.10077

1330

327

R

1458 04 38 30 -51 43 6.38 120

✓ R/R

645	+72	1404	-500	290047
643	+85	1382	-510	262000 40*
645	+70	1401	-506	11 00077
645	+70	1406	-505	②

✓ 905 ✓ 625

⊕

5.55	+0.457	30.018
5.57	+0.445	6.775
5.74	+0.447	3 Jan 75
5.80	+1.450	③



1-199 64 41 49 +24 03 6.08 dFE +55

WR R

(0.2)

prob

(255)
adms (255)

(255) 396 155

(486) 558

6.16 -367 885 -357 294477
6.18 -354 877 -359 304
6.17 -360 881 -358

6.07 +0.186 56277
6.08 76.197 49277
6.08 76.198

260 496 4305

152

30000

2.59

Am=0 4"

6.50

1504 AD

4 39 54 -58 59 6.52+68

① 2.126

6.55 276
6.54 290
6.54 290

905
924
930

437
438
431

280
280
280

6.27
6.25

+0.20 270
+0.22 290

6.54 294
6.54 291
6.54 427

940
931
190

454
448
476

2.128
2.127

6.22
6.25

+0.225 290
+0.275 290

237 capd

①R

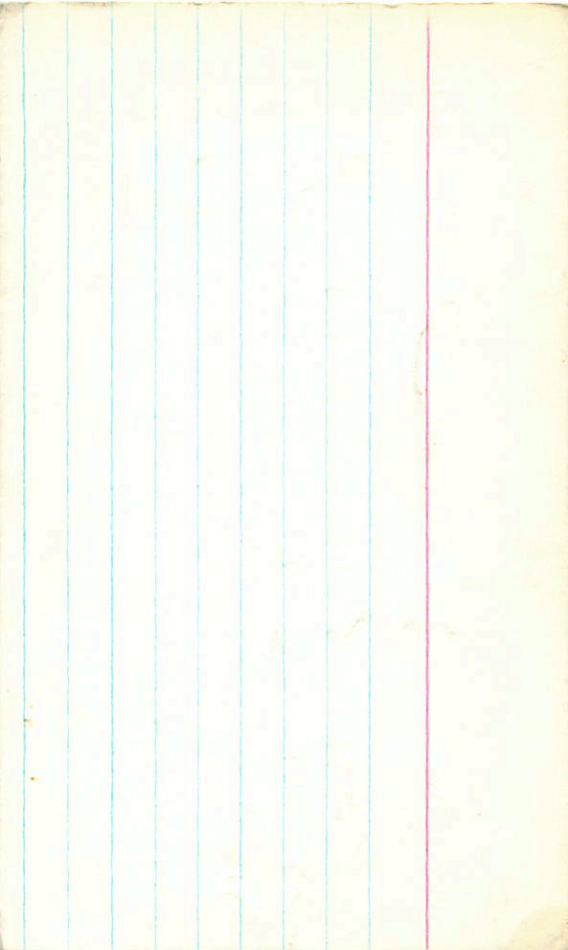
②R

6.27 +0.215

④

653 426 234 324

220



1509 64 42 16 -30 48 567 + 1.415102

✓

5.68 +122 1454 -488 2620077 40'

5.68 +121 1460 -485 840077

5.68 +122 1457 -486 [7.38 + 0.556] 1520 83

5.68 +122 1457 -486 ✓

496

5.67 + 1.41 1072

4.94 + 1.782 1072

5.69 + 1.35 + 1.60 20 1072

4.84 + 0.523 1072

4.95 + 1.491 20 1072

⊕

1516 04 42 12 -50 31 5.30 905

5.32 -129 1134 -442 25210 ^{40"} 40"

5.31 -132 1129 (-482) 26200 77

5.33 -132 1131 -432 11 Dec 77

5.32 -131 1131 -437

4.91 +0.36 2 slots

5.30 +48 - C

4.84 +0.34 3 Dec 71

5.32 +0.975 +0.70 3 Jan 71

4.85 +0.326 6 ^{10 Dec 72}

~~2.28 +0.385 3 Dec 72~~
316

4.90
4.89 +0.316
+0.322 2 Dec 78

4.87 +0.32

1517 04 44 55 + 18 42 6.01 + 121 g 124

✓ R R

$$\begin{array}{r} 5.55 + 3 \quad 1407 - 508 \quad 29 \text{ Dec } 77 \\ 6.00 + 14 \quad 1392 - 450 \quad 30 \text{ } \\ \hline 5.99 + 10 \quad 1400 - 499 \end{array}$$
$$\begin{array}{r} 5.55 + 10353 \text{ Jan } 78 \\ 5.43 \quad 1557 \\ \hline 5.48 \quad 1386 \text{ Jan } 78 \\ \hline 4.390 \end{array}$$

1526 04 45 10 -39 23 6.03 +1.08 100

✓
R/R

6.07 -91 1197 -476 2620077 40'

6.07 -91 1203 -453 2300077

6.07 -86 1200 -450 2889 +0.44] 23

lev 77

5.82 -10.352 -6.277

5.50 -10.249 3.605

5.51 -10.350 -

Q

30479

1531 04 39 20 -77 41.5 6-04 +1.10 100

R ✓ 6.06 -63 1210 -454 2620077 40°

6.07 209 -65 1200 -452 1080077

R 6.06 209 -64 1205 -455 2800077

6.57 454 ✓ 6.59 457 ✓ 6.55 457 ✓ 6.57 457 ✓

5.55 10379 7000077

5.56 10358 2100077

5.56 10369

⊕

5.56 10358 (1015)

2.595

64 14

el 64

30495

1532 4 46 28 -16 58 5.21 10.14

311 923 -492 2.180 3.244

5.48 -297 414 -503 29.11.76

5.48 -293 504 -486 2.4.76

5.50 331 926 -490 12.14 4.847 5.25 +0.23 15

+0.215 18.6.16

5.24 +0.23 3.2.77

5.21 10.24 25.2.76

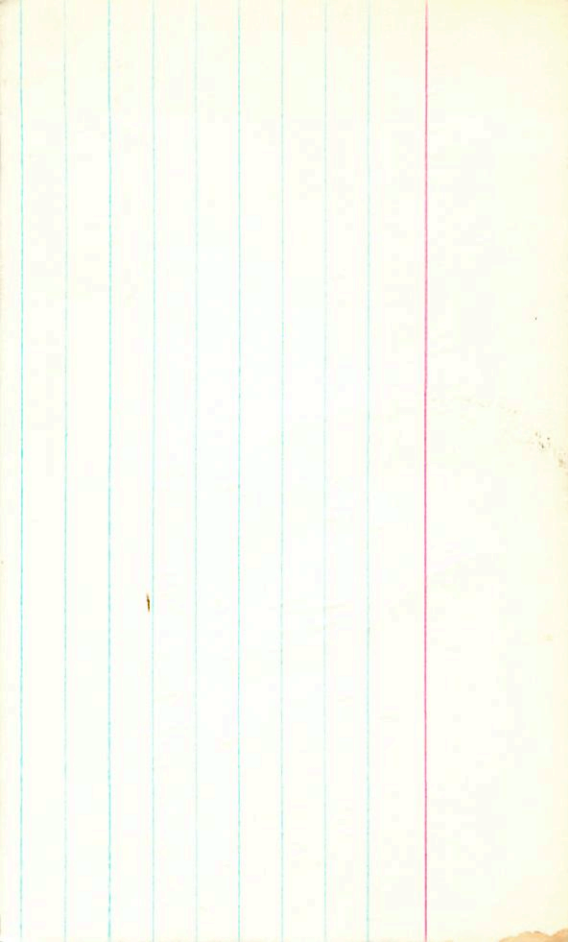
5.22 +0.22 4

5.46 414 120 114 1.5.58

Apr 22 0.11 410 2.18 6.1.16

5.46 395 213 320 2.5.63

5.46 395



1534 ✓ 04 47 32 +3 33.5 4.04 1414

✓

RR

6.04 +16 1253 -755 29.257
6.05 +22 1278 -462 30.0
6.04 +19 1250 -459

5.52 423

5.52

5.60 +1395 3 per 75
5.49 +1390 2 per 75
5.53 +1394

1586
30562

5.48 + 21

12

529 + 645 + 528

576 + 64

30562

4

47

23

-5

42.5

38 35

388 - 2145

2145 25 2180

5.46 + 0.19320 am
5.51 + 0.17523 y
5.48 - 0.175 (2)

574 - 318

921

388 - 2145

5.46 + 0.19320 am
5.51 + 0.17523 y
5.48 - 0.175 (2)

576 - 310

906 - 857

712

5.46 + 0.19320 am
5.51 + 0.17523 y
5.48 - 0.175 (2)

574 - 309

920 - 425

12"

5.46 + 0.19320 am
5.51 + 0.17523 y
5.48 - 0.175 (2)

579 - 314

920 - 374

2145 2145

5.46 + 0.19320 am
5.51 + 0.17523 y
5.48 - 0.175 (2)

577 - 313

919 - 350

2145 2145

5.46 + 0.19320 am
5.51 + 0.17523 y
5.48 - 0.175 (2)

347 174 521 269

192

5.50 + 63 + 16.26

5.50 + 63 + 16.26

5.75 + 66 + 19.85

5.75 + 66 + 19.85

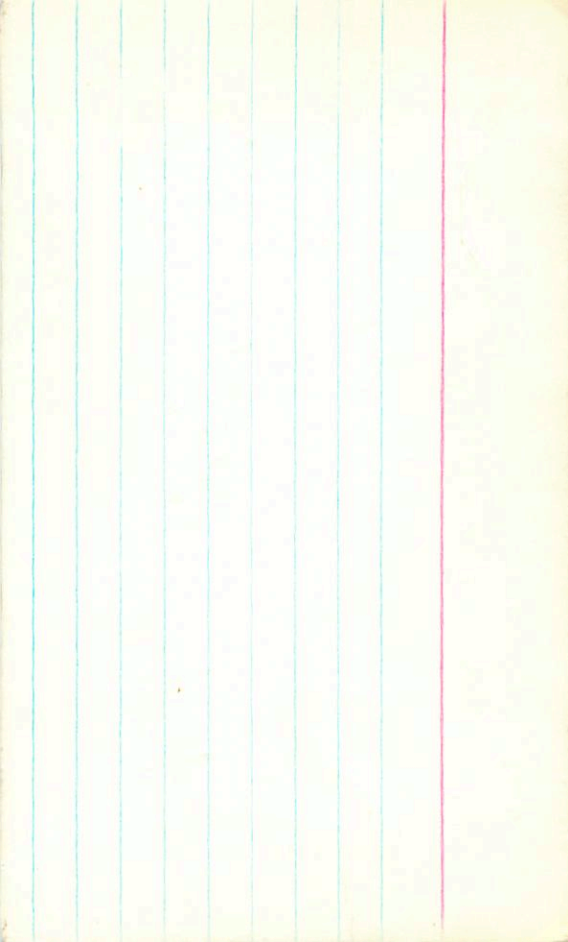
5.75 + 66 + 19.85

5.75 + 66 + 19.85

111

RR

RR



✓

1535
↑B

340 177 449 2123 00 547 141
861 123 457 21623 B 255 13

mail 4 47 40 -16 21 576+550

89

574 -375 901 -381 2:166 26280
 576 -367 877 -372 2:153 27275
 578 -380 897 -378 2:153 25240
 578 -378 899 -380 2:164(2)

340 156 549 2122

270 467

1534 ✓ 04 46 55 -30 03.5 6.36 +108 100

R.R. 6.37 -71 1183 -485 26 Nov 77 40"
6.37 -79 1185 -478 " 6 Dec 77 24"
6.37 -75 1184 -482

5.91 10.41 28.10
5.91 +8.70 20.183
5.93 +0.378 6.481
5.19 +0.370 5.114
~~5.76 +1.372~~
5.88 +372 (3)

6.38 +1.08 8.01 + 8.89
6.36 +1.08 8.01 + 8.89

1587 ~ 04 98 2X + 15 52.6.25