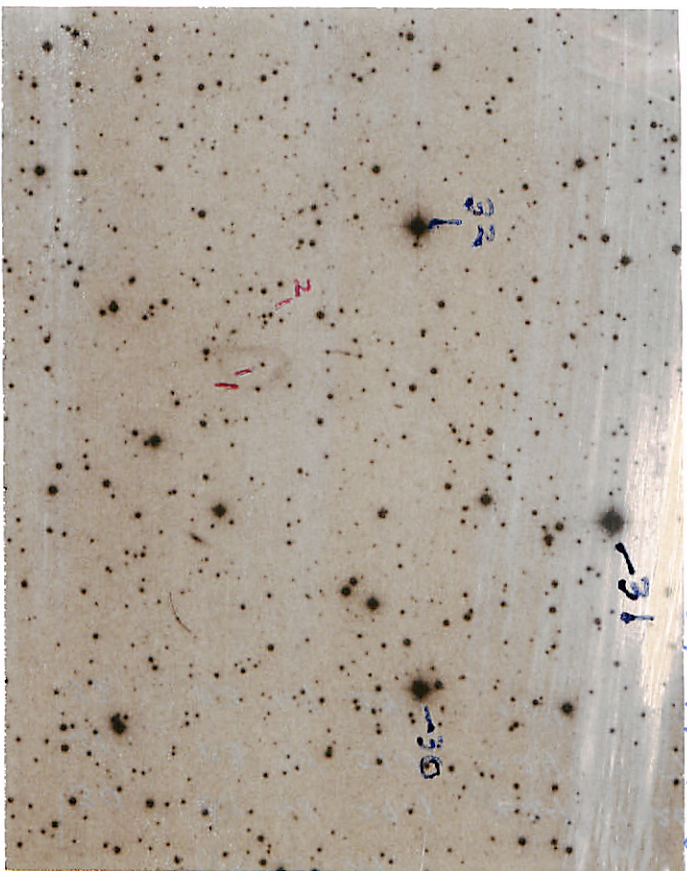


LB 1497

N

03 49 06 } 1950  
+34 47 12 }



32

Z

31

30

E

W

E 31

S

(DUP)

30	03	48	29.1	+24	51	26.6
31	03	48	51.1	+24	56	57.7
32	03	49	29.1	+24	51	24.9

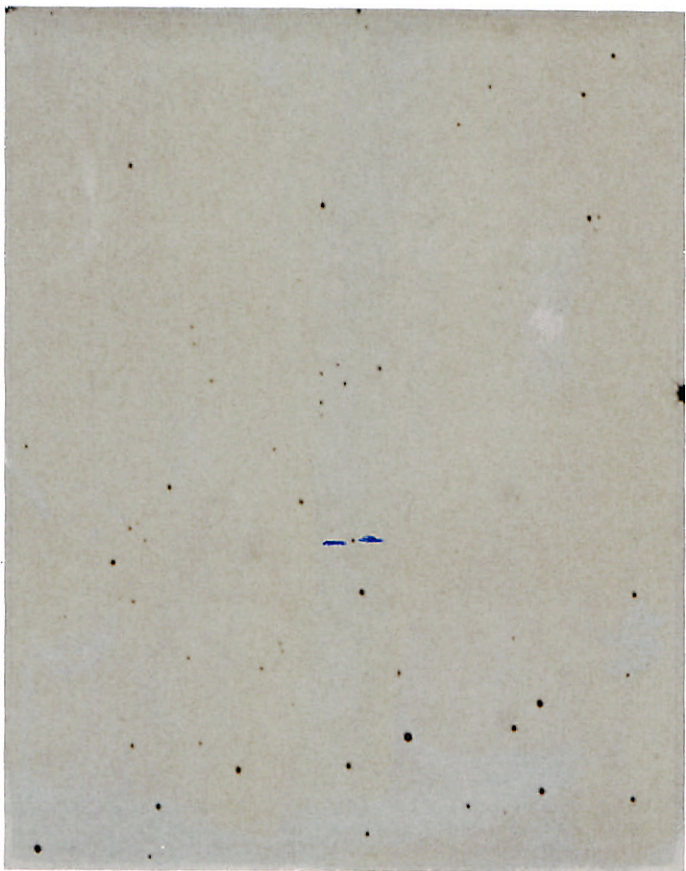
AGK 2 CAT.

LB1497  
E 31

1359

2/6mm

9-4



LTT 6079

0.741

15 12 06

-18 26

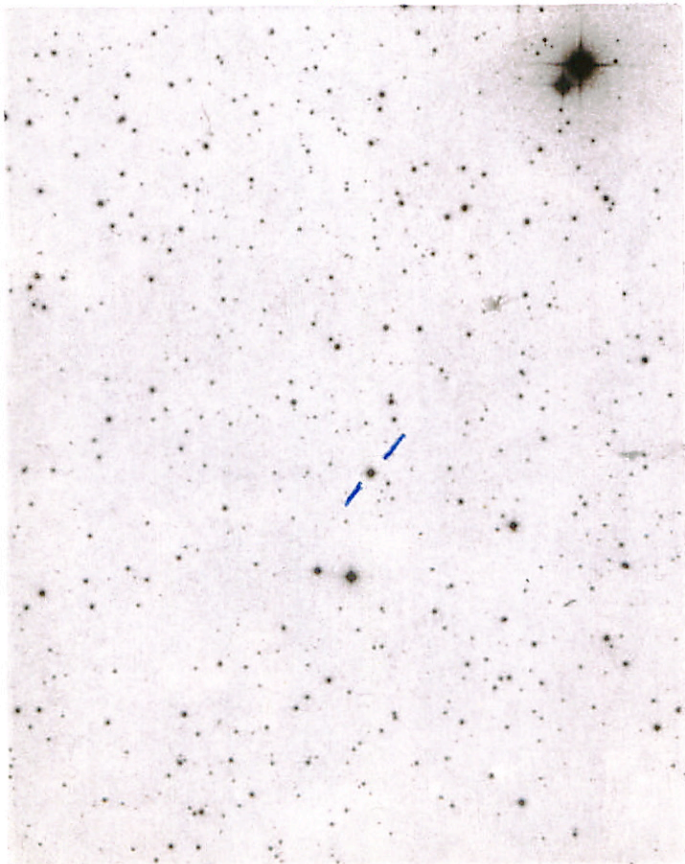
( 15 12 01  
-18 30 )

12.2 5.05

( 8-27 )

LTT 6079

12.46 10.569 -0.22 (3) N



E

14  
15

7 12 39 01 -43 23.5

12 38.1 -43 18 13.7

1.04

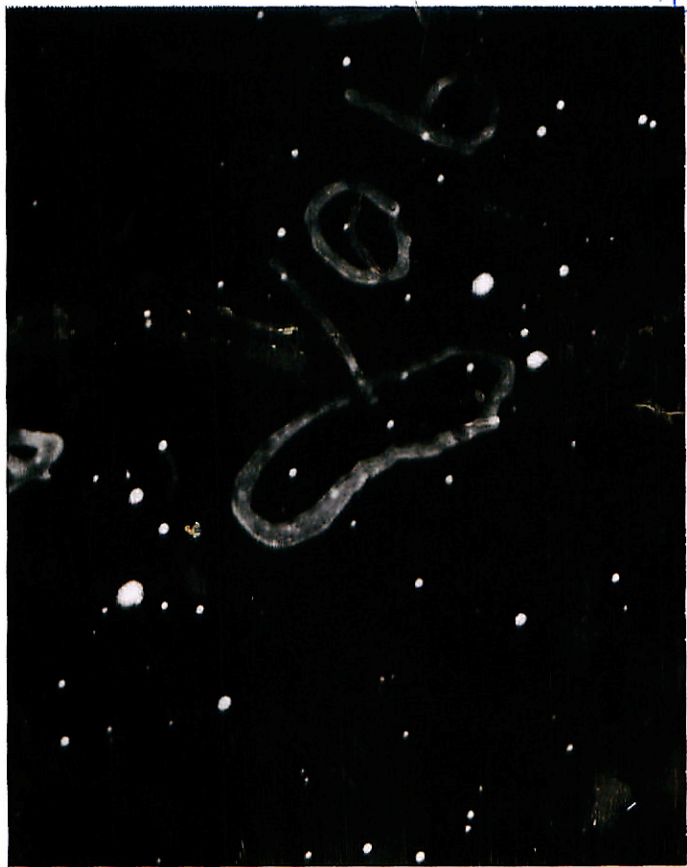
*over*

*12.38*

*1.04*

*(28)*

~~12.44 11.01 10.48~~ (1) 12.24 11.75 11.34 (3)



→ 10 13 34 -47 00  
3758 10 12.4 -46 5 14.8 to 1-12

13.59+175

Try again

Altho... yes

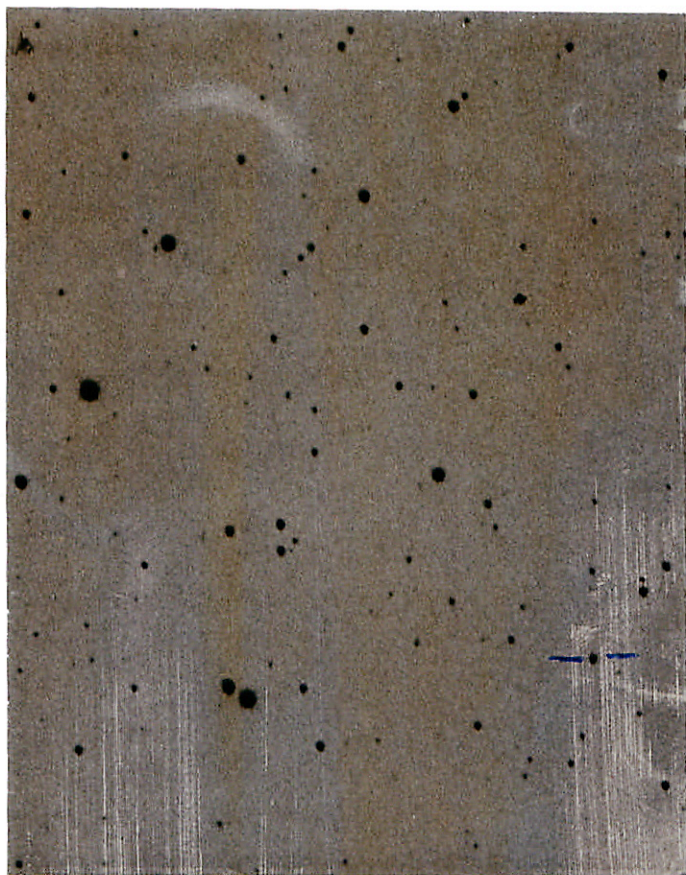
273

for 1/11

320



5



56

DR

2 1/2

Lo



2857  
L588  
246-17

22 29 25

-51 05

✓  
Kings

10 288 -51 03

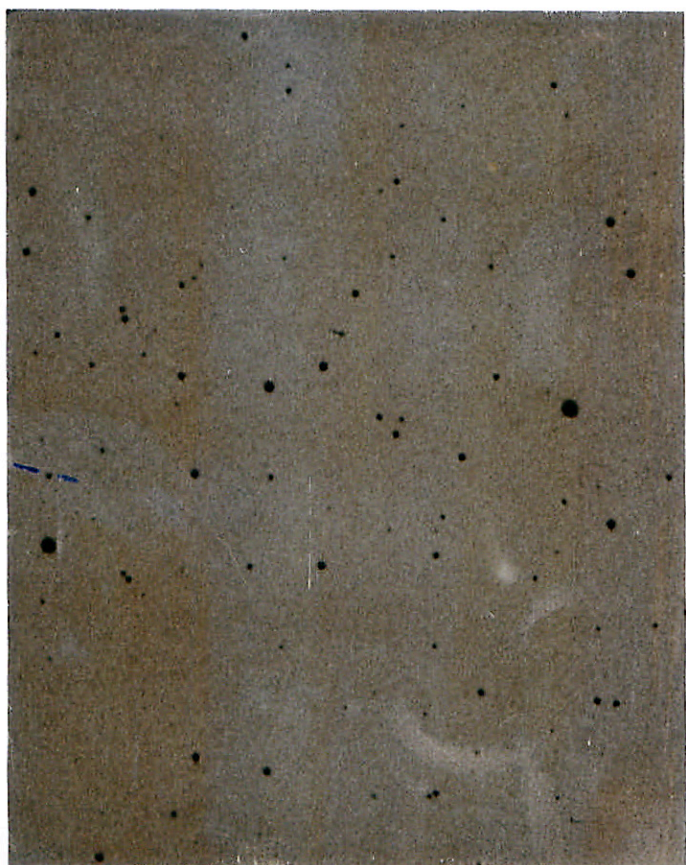
13.7 g-k 0.59

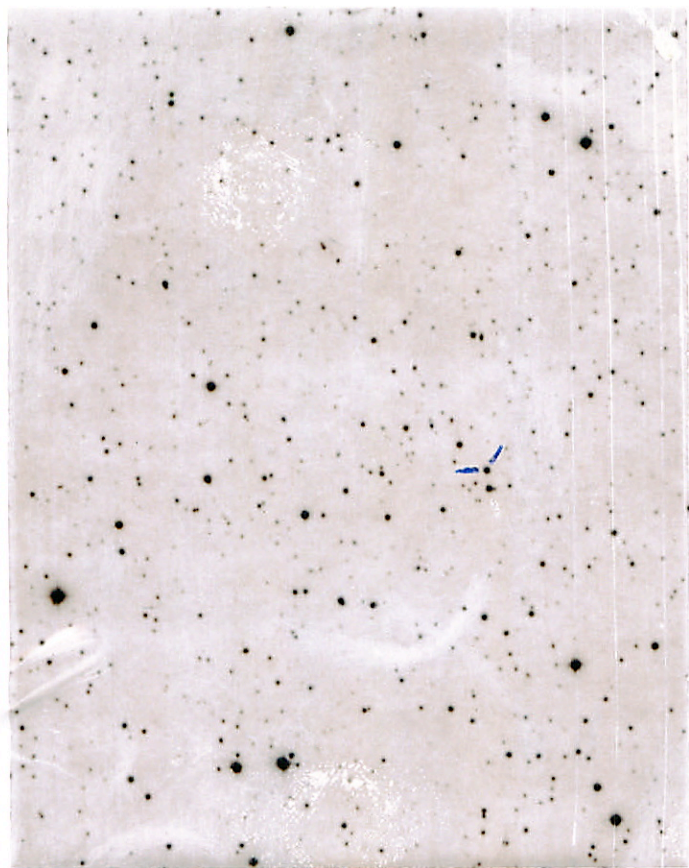


96

2' / cm

9-3









057

21/12

2007 548 -313 906 -514 (30)

548 -314 907 -515 (52)

548 -318<sup>±3</sup> 907<sup>±5</sup> -522<sup>±7</sup> 2.115 -515<sup>±5</sup> (51)

548 -315<sup>±4</sup> 911<sup>±4</sup> -521<sup>±5</sup> 2.114<sup>±5</sup> (24)

548 -314 908 -520 2.117

549 -321 910 -518 2.126 17 Oct 80 0.9 129Wd

548 -315 909 -521 2.120 14 " "

548 -310 907 -522 2.118 20 " "

548 -313 908 -520 2.121 21 " "

548 -309 907 -526 2.122 22 " "

549 -314 906 -520 2.115 23 Oct  
549 -311 906 -514 2.117 24 Oct 1.3  
600 -314 925 -536 2.115 6 "



L1998

2A 12.6 - 13.7  
13.10

B1A<sub>2</sub>

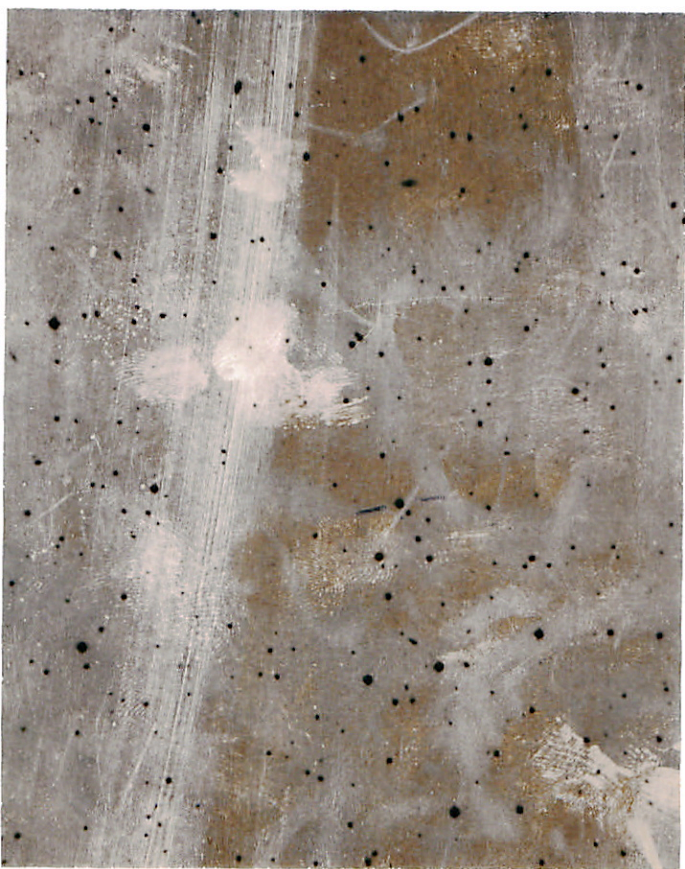
$f = -6.2^\circ$

26

22 38 23

-23 24

M12  
22  
B



N



9-10



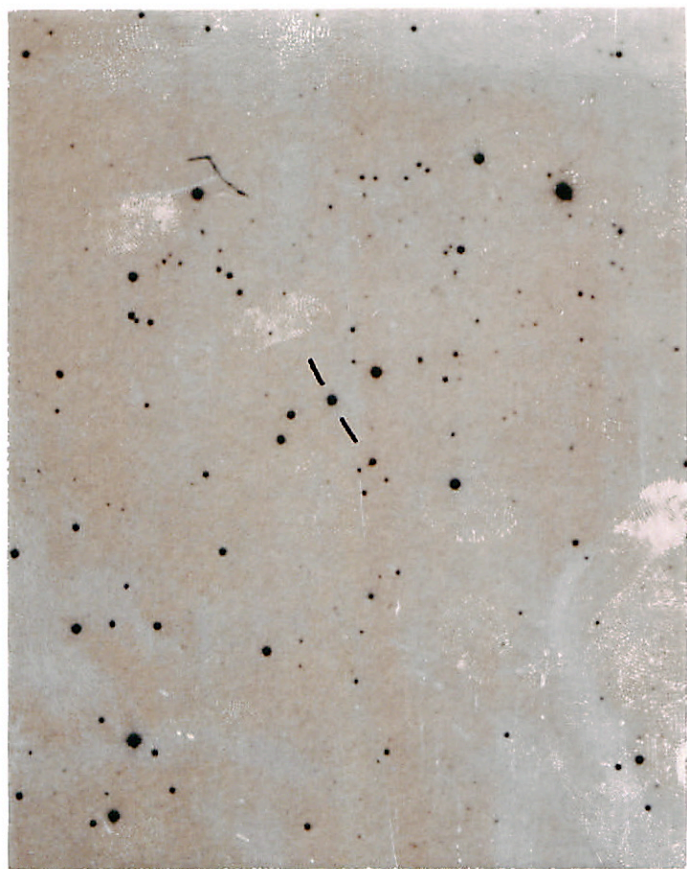
b

N

N

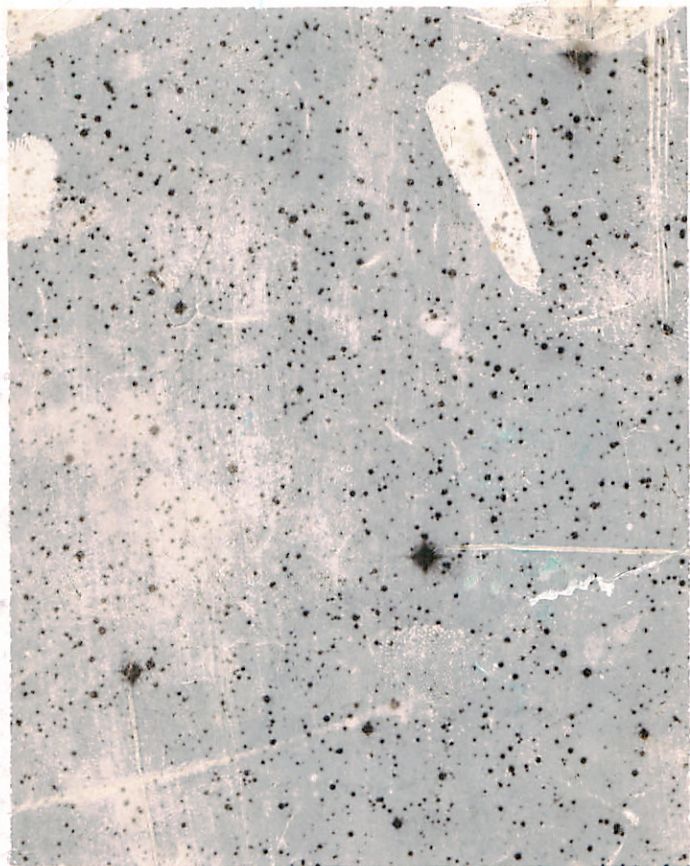
2 1/2 km

14 14 28-28 31 31 ←  
 5645 / 53.5  
 5645 14 181 28 49 140 9.30



9

10

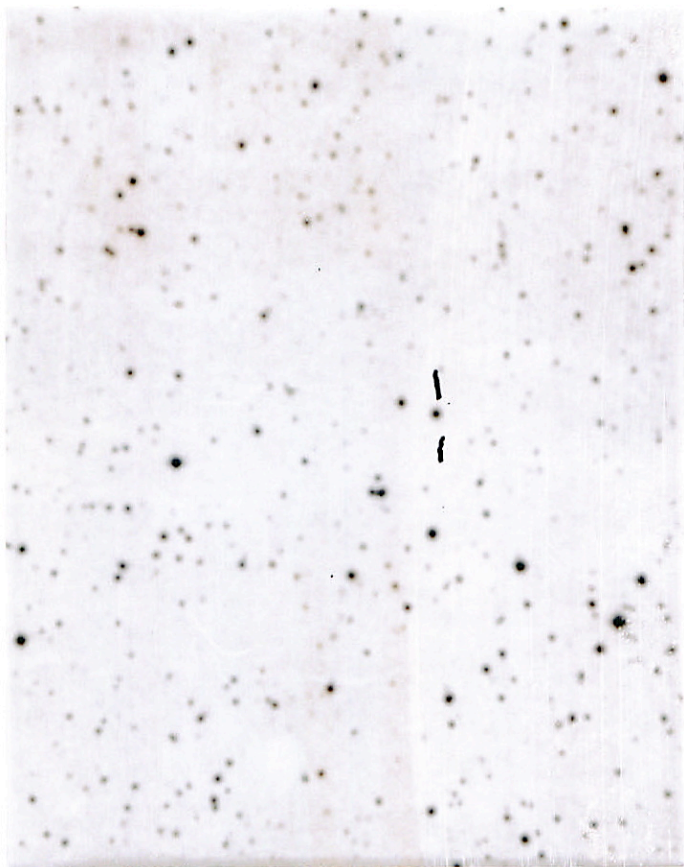


7-2 45.9 45.26.6 1962  
2

446 5.3 4.23 4.11  
3500 6.40 4.23 4.11  
2001 10.07 4.51 4.23  
2002 10.07 4.51 4.23

POLAROID

M10231



34  
8-33

187

E 980

LTT 5453

13 56 24

13 57 21

1963

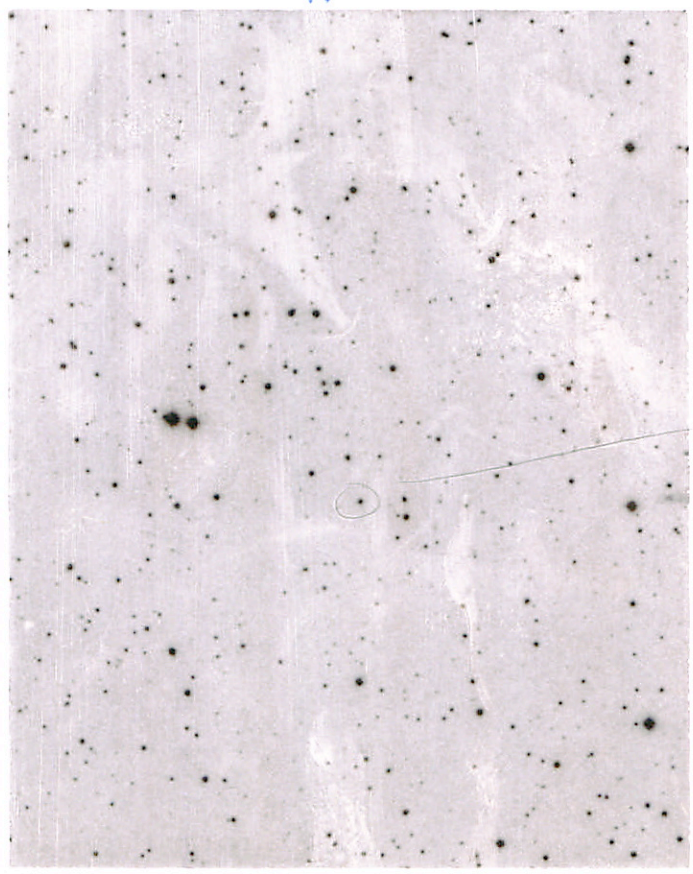
0.35

-23 19

-23 23 S

L

N



↓  
40  
↓

15.02 +0.38 -0.62

1950 Oct 13.7 -24° 41' S

W



N

E

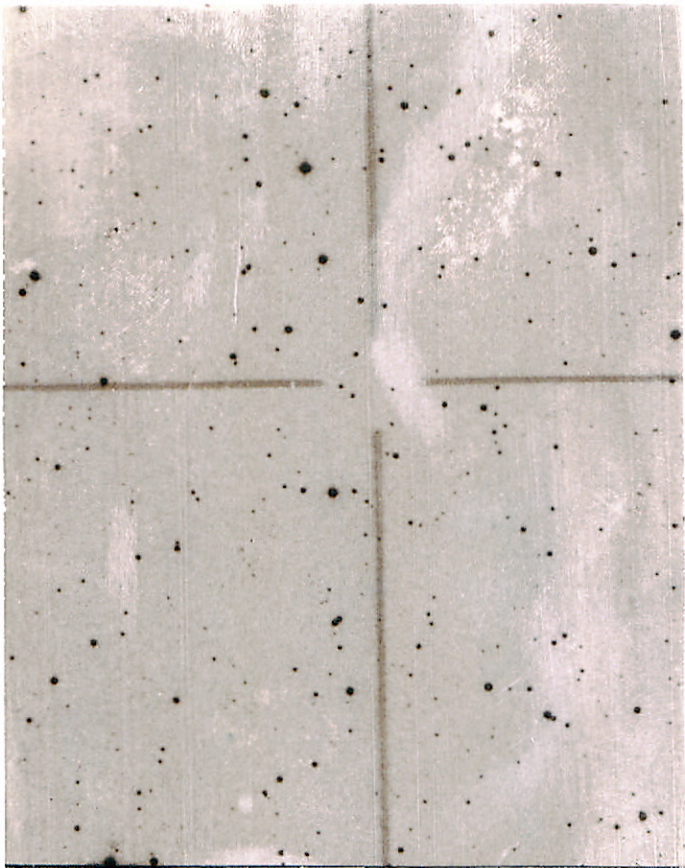
LTT 125

1950

12<sup>h</sup> 23<sup>m</sup> 4<sup>s</sup>

-24° 19' 5"

W

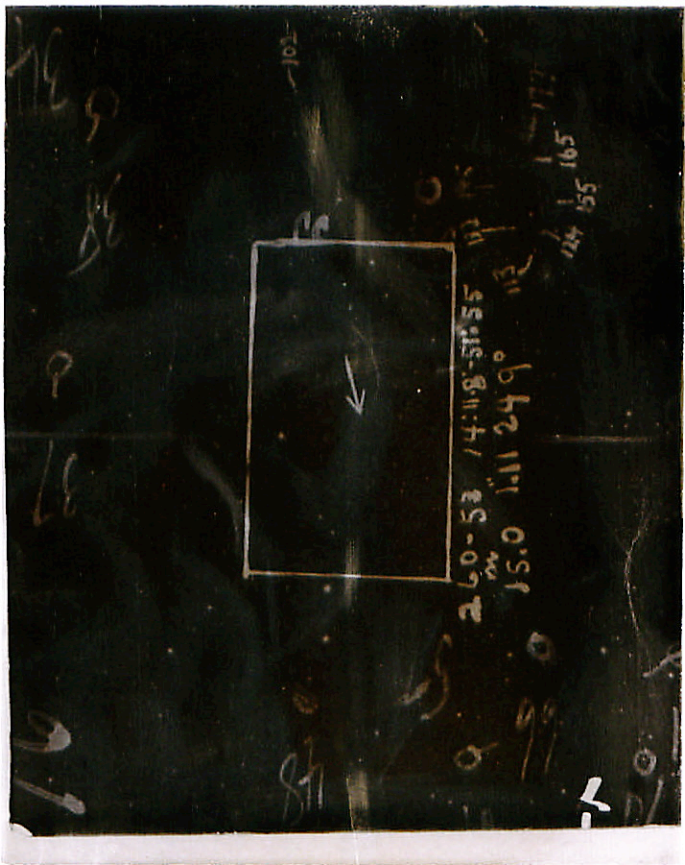


N

E

LTT 4697





102

93

88

9

78

10



2.60-53 / 4:18:51:55

15.0 1.11 249°

124 155 165 177

9 90

7