

2458 23759 -14 06 48 22 24

2553 6 54 44 -14 01 5.0 IN ABVAL

Sp. 2000/1000

7-5-9  
155d

RT Un 13 01 07 +05 21

150d

SW Un 13 12 31 -02 39 7-8-5

SV Un 13 31 17 -07 01 6-8-7

1065H 12 13 35 -10 25 6-5-84  
111

P T Page

8

~~28~~ 03

~~27~~ 55 - 06 12

2.14.13

250<sup>d</sup>

10.20.13

Jul 15  
by

2.47  
+1.59  
+1.00  
12 pm 9h

8.29  
+1.53  
+0.60  
3 pm  
by

5.37  
+1.87  
8 pm 6h

Jul 13

8 pm  
4.24  
+2.38

(B)

ppm 3

ppm 3 pm  
3 pm

Air 14ya

8 38

21 -17

11

G.C-70 A.V.1

↓ ppm

RW 14ya

13 42-39

-25 14

12-11.2

G.M.p.

↓ ppm  
(14V)

G-14-57/58 13 27 29 -8 26.7 1950

12. Spin red 48"  
11.5 in w.d. 48"

22	20	-7	45	1955
27	40	-8	18.8	1950
28	18	-8	22.5	1942
→ 13	28	37	-8	25 ←

B 150"

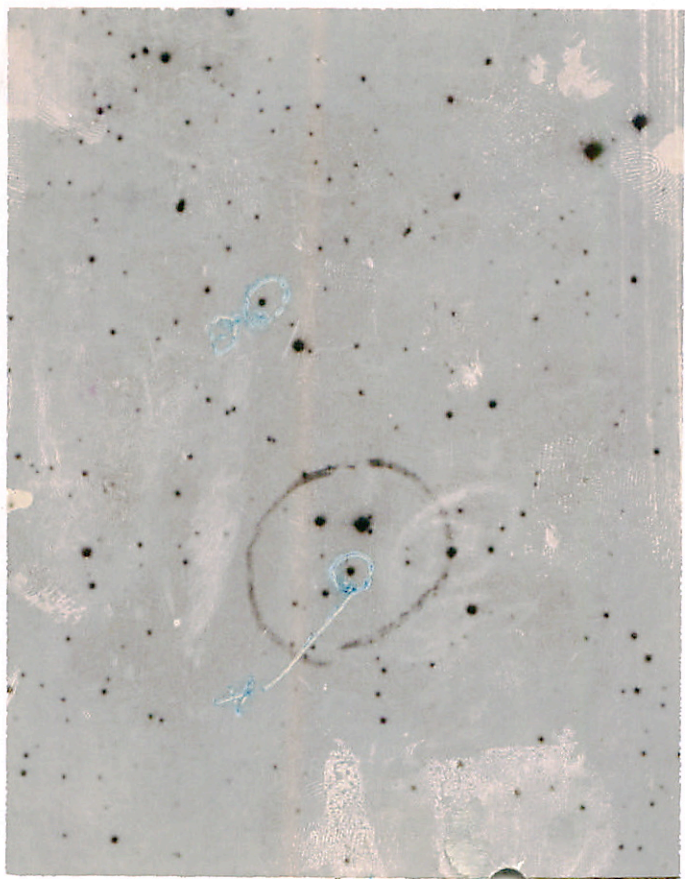
Red 2

B 200  
Phy 194

more red



15/29-41-8



20

2



V948 ceph

18

14 21

103 20

1502

5 12 20

16 51

210 1550

13.5 - 14.0

17 21

21.2 1560

D.5-36

27

21.2 1542

12 06

V949 ceph

18

15 21

103 28

1502

5422-8

18 27

29.3 1942

13.2-13.6

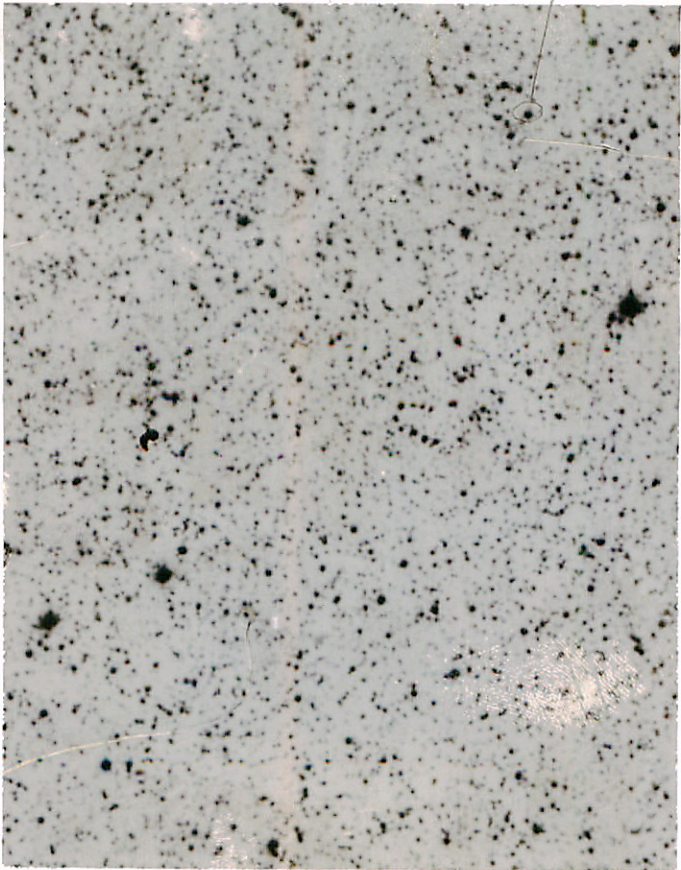
0.579

(2)

Both

~~XXXXXXXXXX~~

1  
A 20



W46905 N

W46905





5-197-60/70



B

↑  
A

A

—

201.1926

Mount ?

89.7 1942

09.4

07.8 +30

59.8 +29

52.6 1858

21

56 16

55 52

53 52

52 04

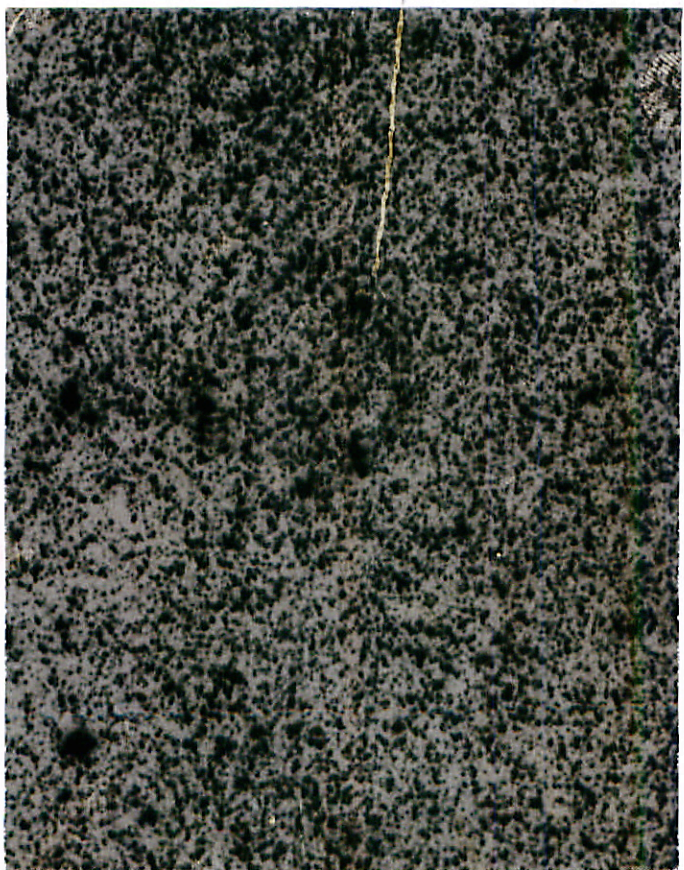
11.7-13.0 11.0

19

Summ. Mt. D. 15

Ez light

100-29



2



SYSAF

00

06

00

-25

39 M 127463

05

54

X

38.6

4119

S ↓

• • • • •

18 Aug

22

18 Sat

20

3 Sat

19 Aug

12 Sat

(B)

M

and

23 Sat

20 Aug

AD516173

22

38.4

H14

17

1550

B-67-12

~~38.4~~  
38.9

20

1960

5.5 } 0.3  
5.5 }

4.5 } 950



;

"

160

Ray

U.S. 17



—



101

00

25

27

-00

10

6.20 -161 1026 -434 (10)

6.23 -171 1029 -440 10 Aug 78 60"

6.21 -163 1014 -423 11 Aug 78 86"

6.26 -164 1025 -446 12 " " "

6.27 -162 1019 -433 13 " " "

6.21 -161 1020 -425 14 Sept 78 36"

6.23 -164 1017 -419 21 Sept 78 36"

6.26 -169 1028 -435 22 " "

6.21 -154 1022 -429 26 Sept 78 24"

6.21 -164 1029 -436 27 " "

6.21 -163 1036 -443 12 Oct 78 91"

6.21 -158 1025 -435 13 Oct 78

6.24 -165 1020 -429 16 Oct 78

~~6.55~~ -725 854 -60 2.245 13 Jan 78  
 6.55-738 863 -60 2.302 14 " 78  
 6.55-714 847 -58 - 14 Nov 78  
 6.54-~~719~~ 848 -47 - 15 Jan 78  
 6.54-721 848 -58 2.244 24 " "  
 6.55-720 850 -54 2.304 25 " "  
 6.56-722 854 -66 2.300 28 Jan 78  
 6.57-703 834 -36 2.243 24 " "  
 6.56-720 856 -67 2.247 30 " "  
 6.55-717 843 -53 2.244 31 " "  
 6.55-721 848 -60 2.244 14 78  
 6.54-722 854 -64 2.243 6 " "  
 6.55-721 844 -62 2.244 7 " "  
 6.55-721 844 -35 2.306 16 " "  
 6.55-721 844 -54 2.242 18 " "  
 6.56-717 847 -52 2.380 14 " "

6.57-724 853 -53 2.304 28 Jan 78  
 6.54-726 866 -64 2.304 22 " "  
 6.56-712 848 -55 2.245 7 Nov 78  
 6.55-718 855 -66 2.256 8 " "  
 6.54-718 848 -59 2.247 5 " "  


---

 6.54-722 851 -57 - 30 Jan 78  
 6.55-724 853 -55 2.244 23 " "  
 6.54-720 857 -65 - 24 " "  
 6.55-722 857 -57 2.303 19 Jan 78  
 6.56-721 855 -54 2.304 20 " "  
 6.55-716 858 -57 2.305 21 " "  
 6.56-716 853 -62 2.304 22 " "  
 6.55-722 844 -51 2.382 24 " "



798 2 39 00 -64 23

6.54 -722 852 -52 2.302  
 ±5 ±5 ±9 ±3

6.56 -723 852 -53 - 27 Dec 75  
 6.54 -731 866 -52 2296 12 Dec 75  
 6.54 -730 859 -49 2307 13 Dec 75  
 6.56 -725 855 -57 2304 16 " "  
 6.55 -719 854 -49 - 9 Dec 77 24 "  
 6.56 -720 854 -83 - 9 " "  
 6.57 -731 853 -45 - 10 " "  
 6.56 -716 946 -45 - 11 " " "  
 6.56 -723 865 -65 - 23 " "  
 6.56 -721 949 -46 - 24 " " "  
 6.54 -726 852 -46 - 25 " "  
 6.56 -703 851 -51 - 20 Nov 78  
 6.55 -722 853 -51 21 " "

6.55 -730 859 -46 22 Nov 75  
 6.55 -723 862 -59 <sup>2301</sup> 23 Nov 76 60 "  
 6.56 -725 855 -58 2302 25 Nov 76 36 "  
 6.56 -718 851 -58 2306 26 " "  
 6.58 -722 852 -55 2309 27 " "  
 6.56 -724 853 -54 2302 29 "  
 6.56 -723 859 -52 2303 30 "  
 6.54 -707 828 -35 2304 5 Dec 78  
 6.55 -725 855 -58 2297 23 " "  
 6.54 -722 856 -51 2300 24 Nov 78 60 "  
 6.56 -719 851 -63 2296 18 Dec 78 60 "  
 6.53 -725 853 -71 2299 19 " "  
 6.56 -723 949 -45 2300 1 Dec 78 36 "  
 6.56 -724 857 -45 2296 21 " "

G 12 - 31/32

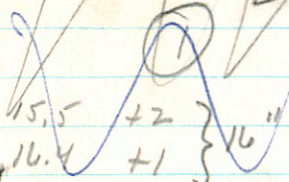
12

11

42

42

1855



AGV in 11

11

55

56

+13

339

5.8-93

0.642

58 29

59 05

17.2

13 1962

AAV in

12

09.15

+12

22.7 1900

11 49

06.0 1550

9.7 - 10.3

0.40

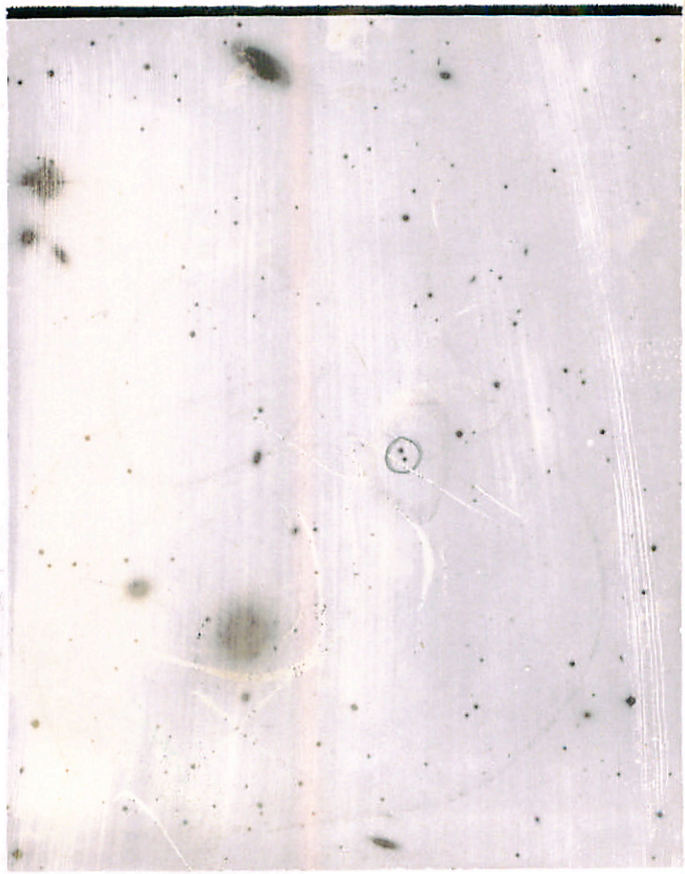
12 24

02.0 1962

Y in 12 397

- or 1.4

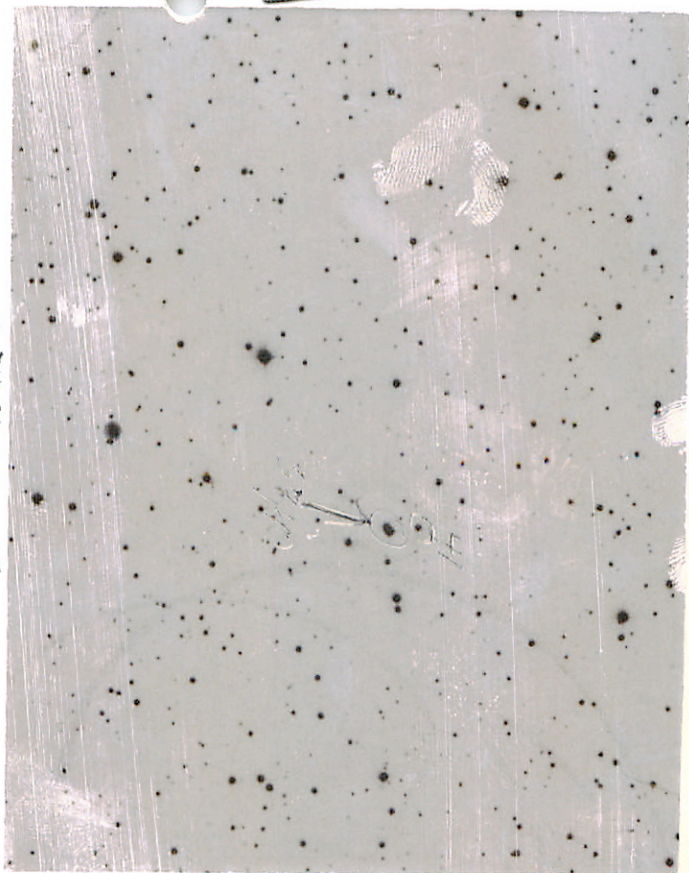
N



E

Q 12.-31/32

5 1000' 99-16 2



G-74-39

40/  
41

2

31 10

37.31

33 42 1555  
434 07

28 15

10.1962

13.3 +4

14.3 +3

16.0 +4

(

(

)

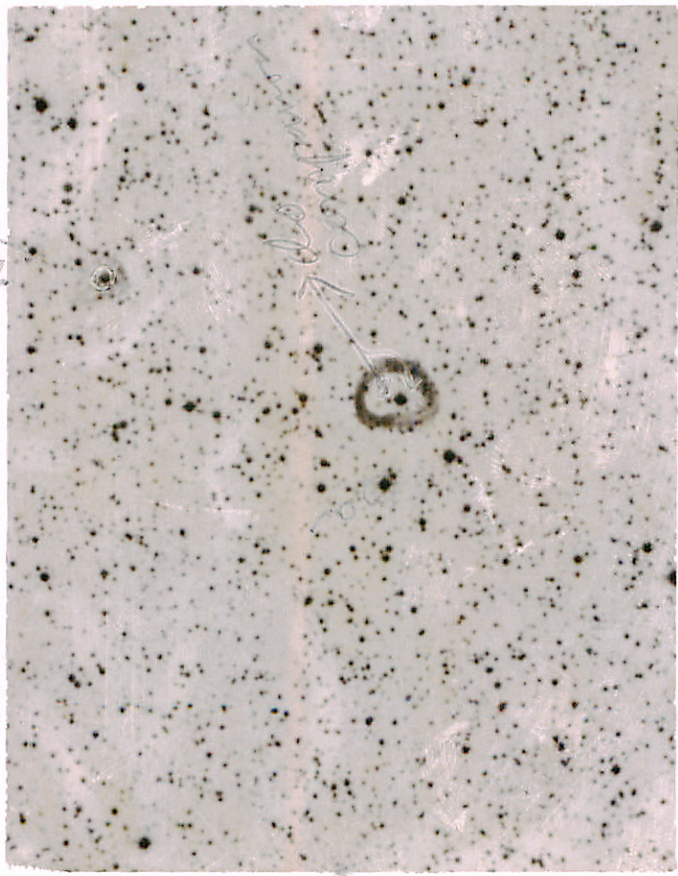
)

			44	07		11.9	1855
S Z mm	6		46	24	-01	15.2	1900
			48	56		18.5	1950
			49	32		19.3	1962

$$\begin{array}{r} 10.7 - 11.4 \\ \hline 16.37 \end{array}$$

			43	33		16.0	1855
TX mm	6		45	50	-01	19.0	1900
			48	22		22.3	1950
				58		23.1	1962

Sp 9 11 duart



37

N



N

E

⊙

Scale 56'' = 1 mar.

BRT



BR Ter 1967 20 31 31 -5258.5

9.5 - 11.4 142 65 SRJ