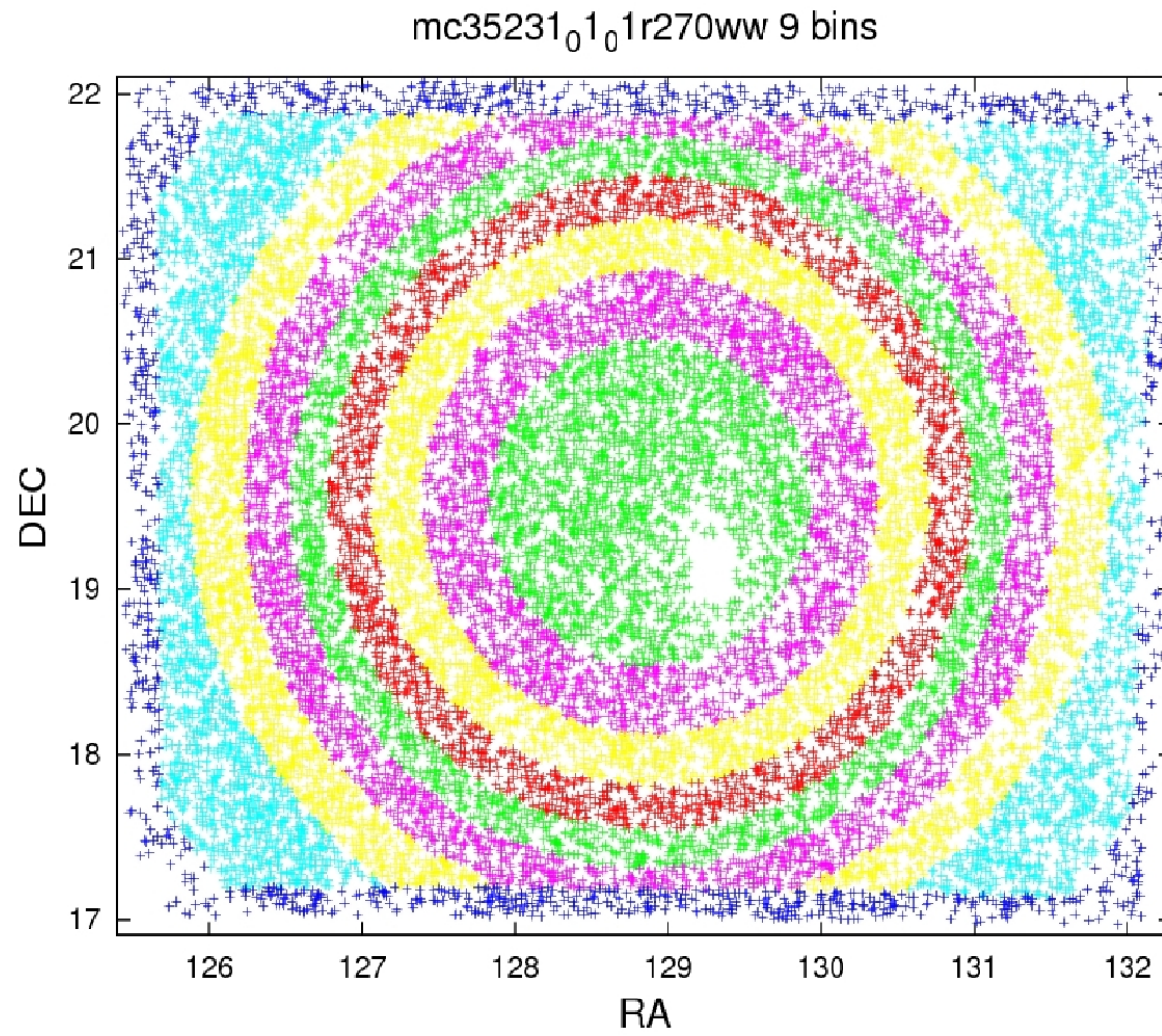


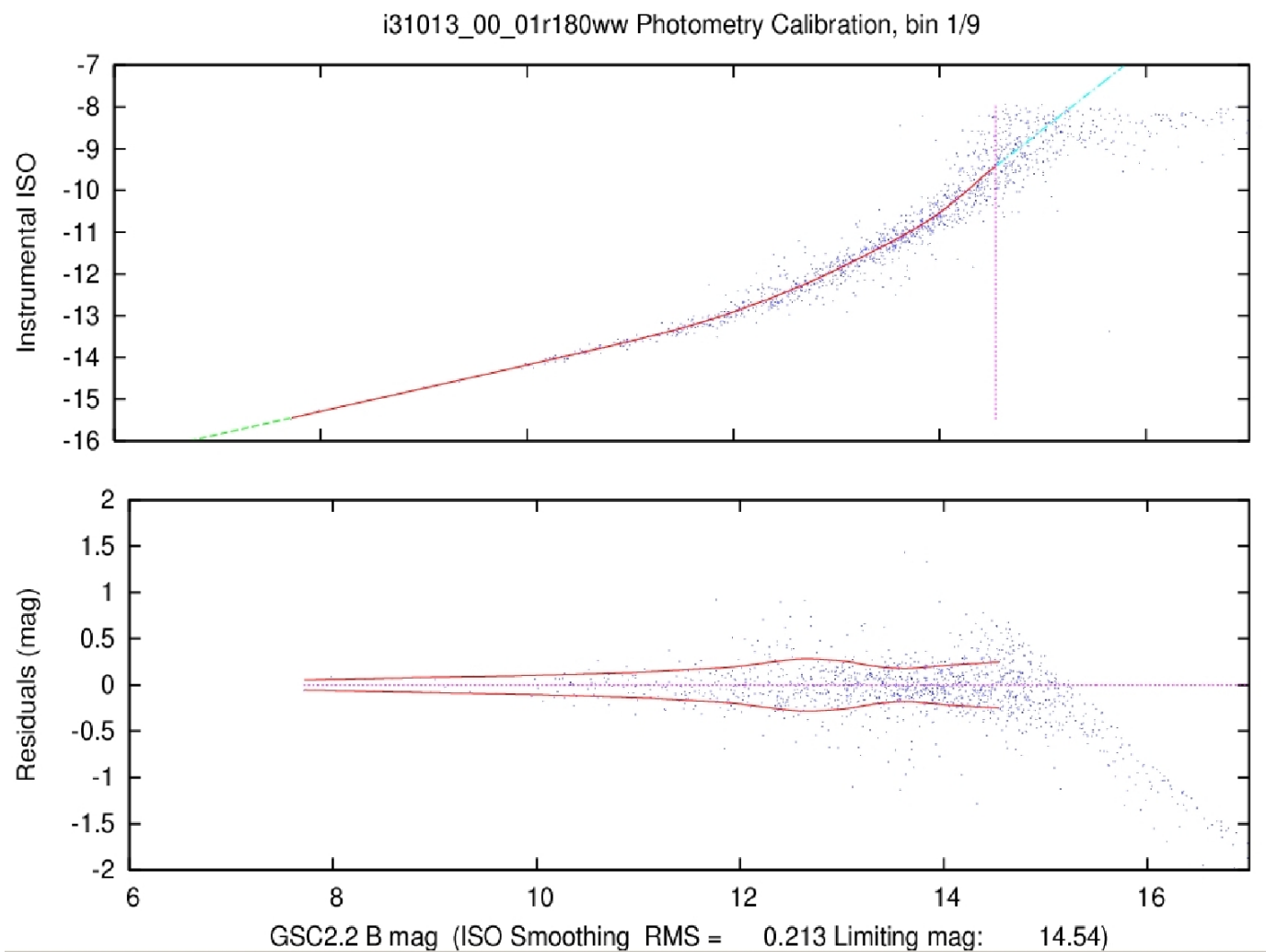
Limiting Magnitudes of the HCO Plates

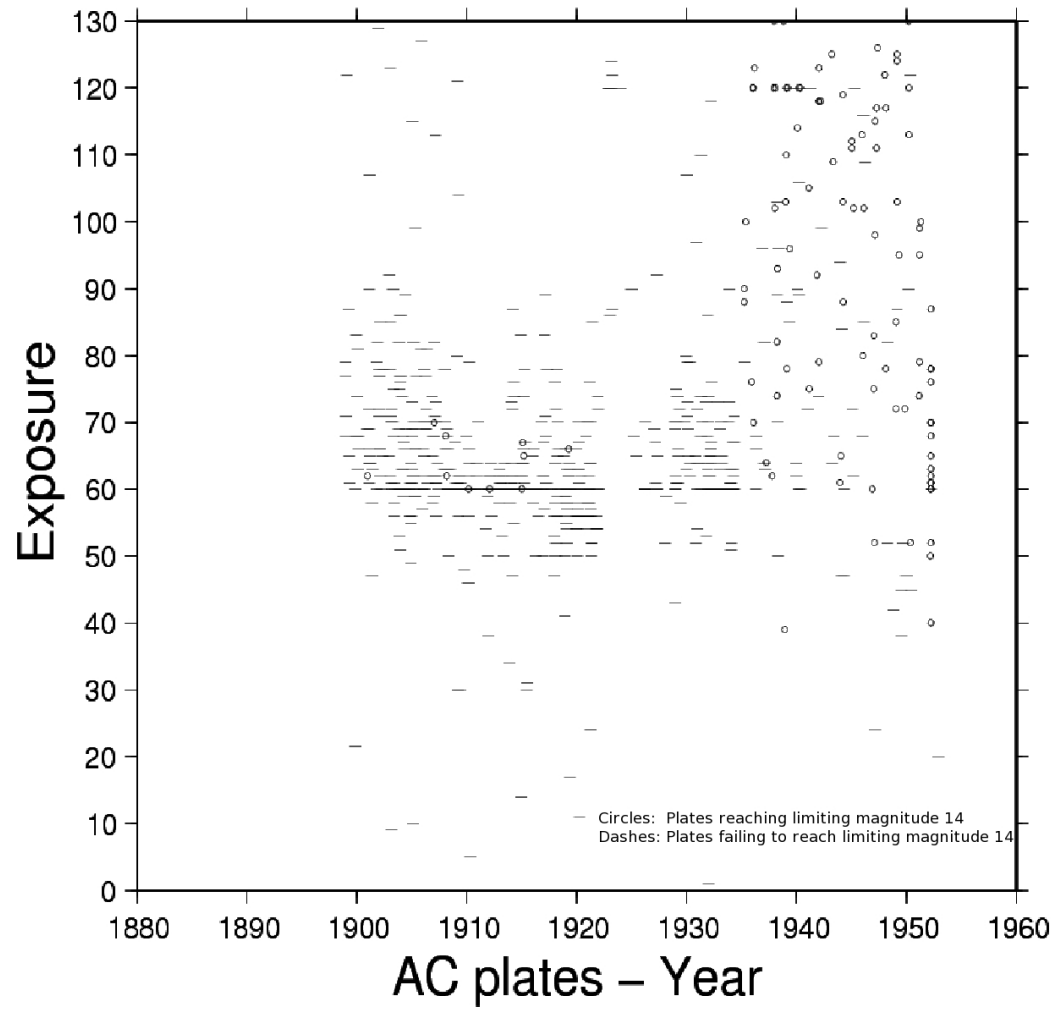
Edward J. Los

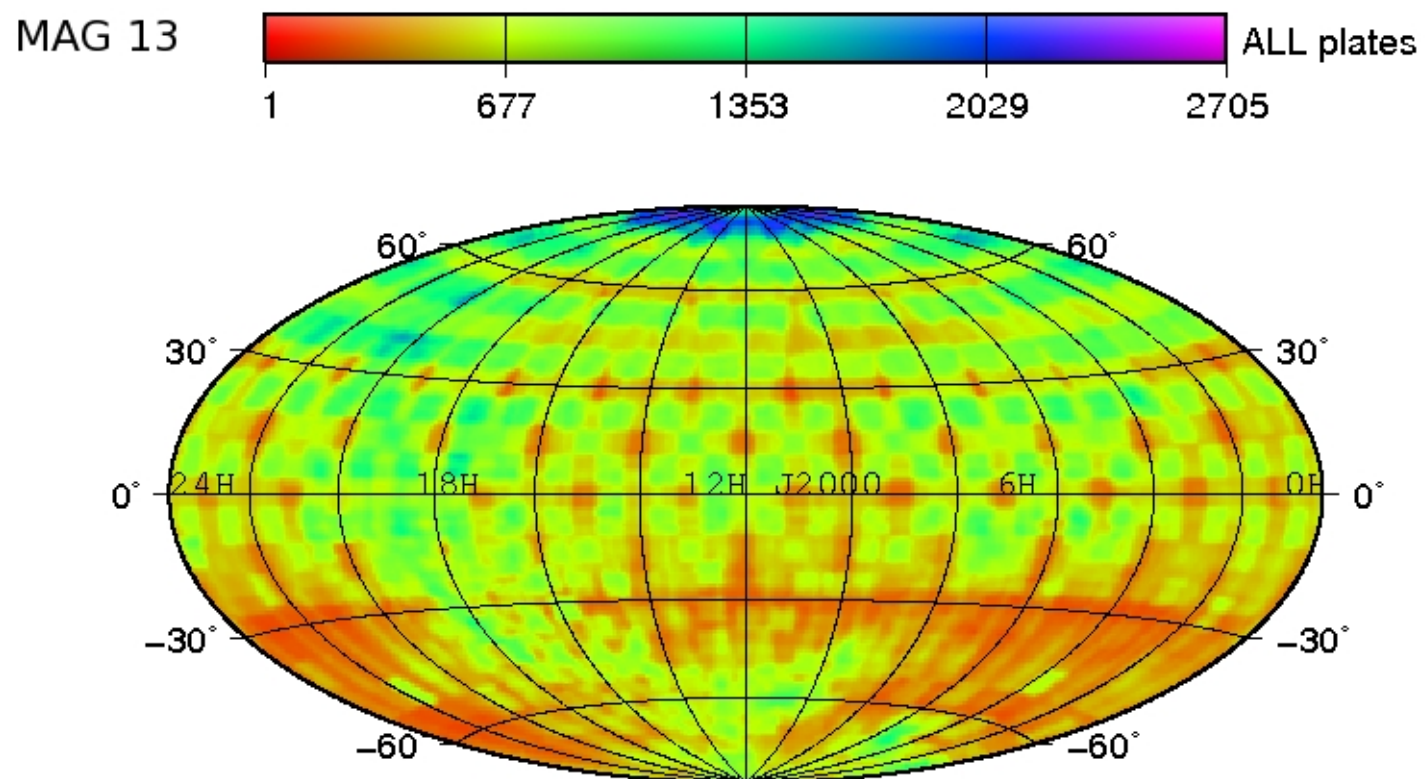
November 7, 2009

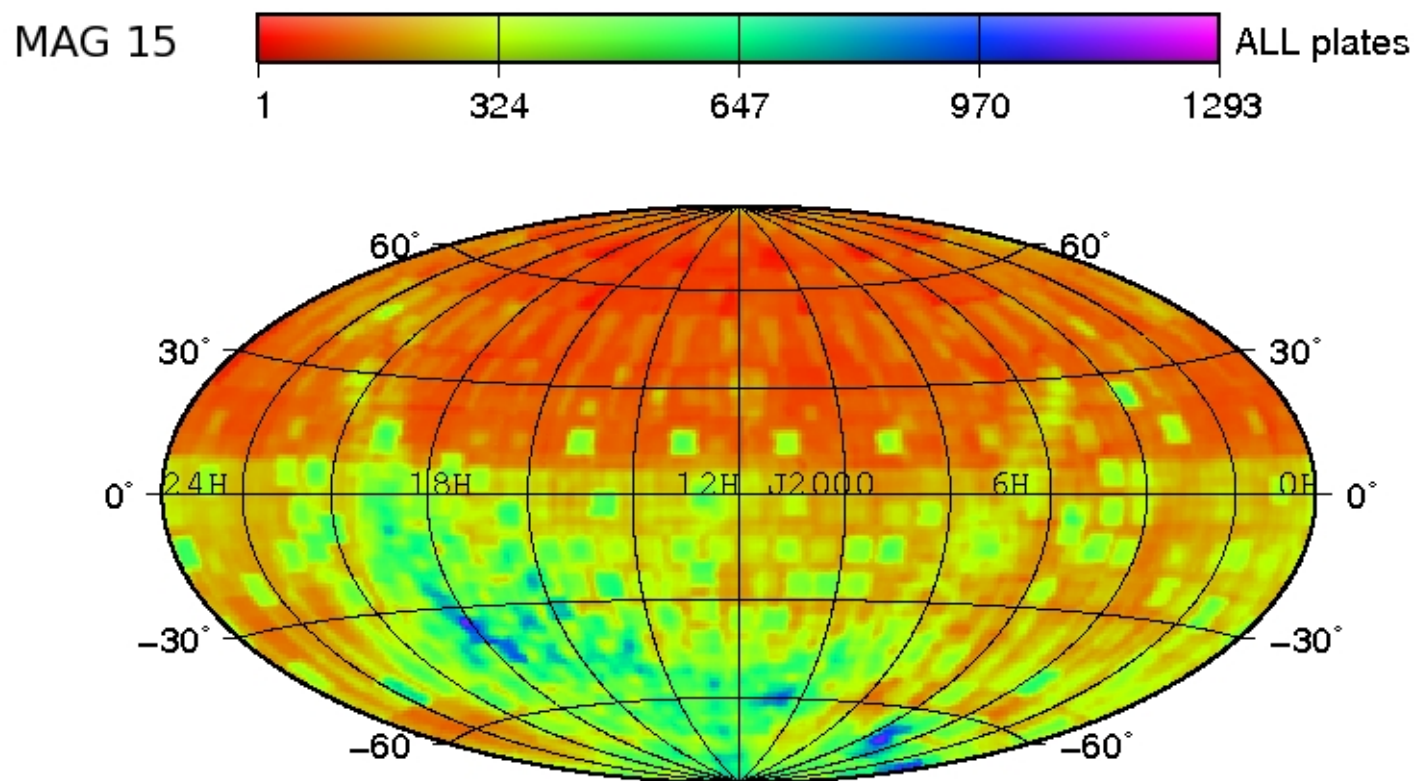
Series	Analyzed	Transcribed	Total	Telescope
a	59	23595	27504	24-inch Bruce Doublet
ac	748	25534	32288	1.5-inch Cooke Lenses
ax	84	3522	4833	3 inch Ross-Tessar Lens
ay	20	1973	1974	2.6-inch Zeiss-Tessar
b	362	48652	76864	8-inch Bach Doublet
bm	348	3219	3222	3-inch Ross
ma	122	6154	11737	12-inch Metcalf Doublet
mc	497	21550	41475	16-inch Metcalf Doublet
mf	116	29917	40897	10-inch Metcalf Triplet
rb	686	17027	17030	3-inch Ross Fecker
rh	1038	16195	16201	3-inch Ross Fecker
OTHER	1961	2644	255975	-
TOTAL	6041	199982	530000	-

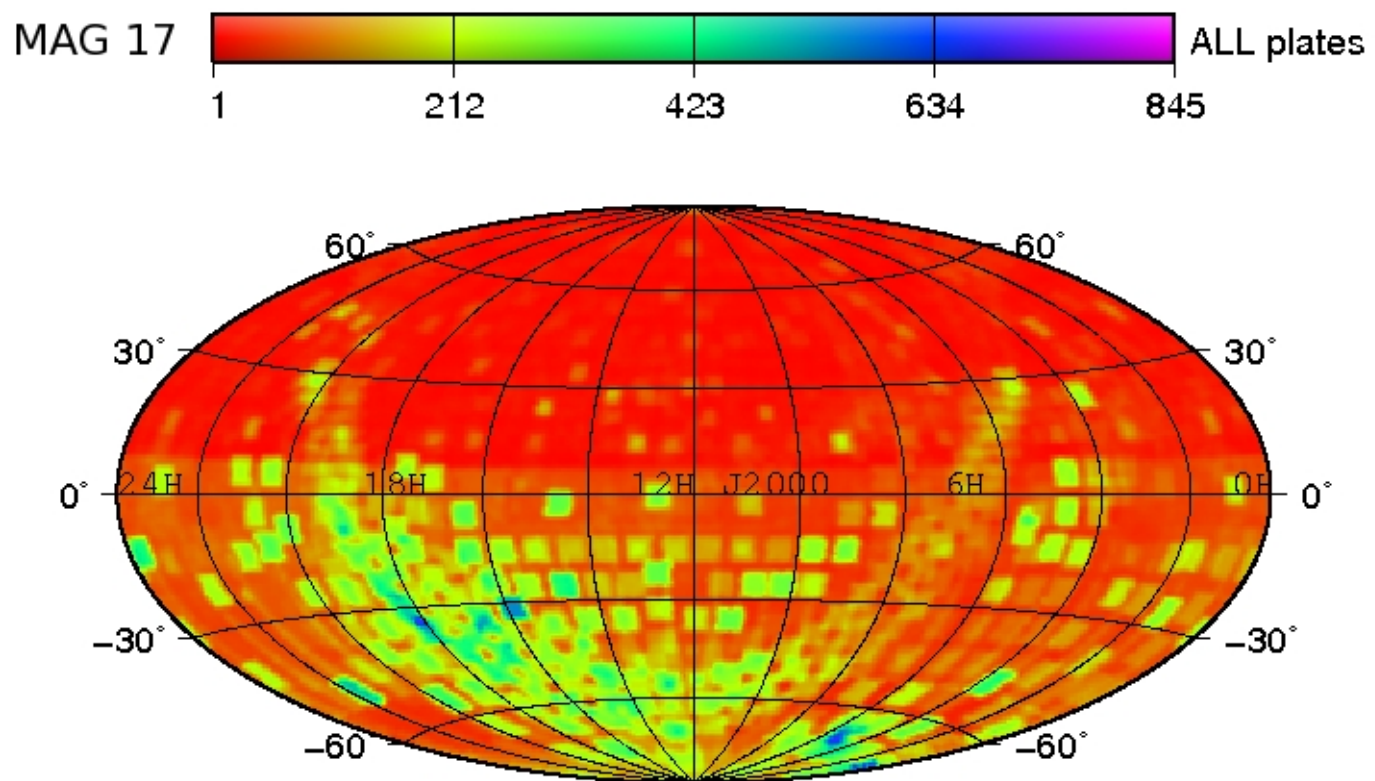












Web Site

DASCH WEB SITE

<http://hea-www.harvard.edu/DASCH/index.php>

...

FULL TEXT OF THIS PAPER

<http://hea-www.harvard.edu/DASCH/papers/coverage6041/aavso5.pdf>