

Solar Bulletin

THE AMERICAN ASSOCIATION OF VARIABLE STAR OBSERVERS — SOLAR DIVISION

P.O. Taylor, Editor
P.O. Box 1476
Boca Raton, FL 33429-1476 U.S.A.



Volume 39

Number 6

June 1983

Relative Sunspot Numbers For June 1983

R_a final			$*R_I$ prov.		
1) 62	11) 78	21) 119	1) 61	11) 73	21) 117
2) 70	12) 75	22) 133	2) 72	12) 66	22) 136
3) 74	13) 87	23) 141	3) 73	13) 67	23) 143
4) 70	14) 90	24) 121	4) 68	14) 88	24) 122
5) 78	15) 90	25) 121	5) 77	15) 92	25) 122
6) 84	16) 88	26) 103	6) 85	16) 84	26) 110
7) 102	17) 83	27) 100	7) 104	17) 79	27) 92
8) 105	18) 87	28) 82	8) 92	18) 78	28) 83
9) 98	19) 107	29) 69	9) 100	19) 103	29) 68
10) 89	20) 120	30) 68	10) 86	20) 117	30) 59

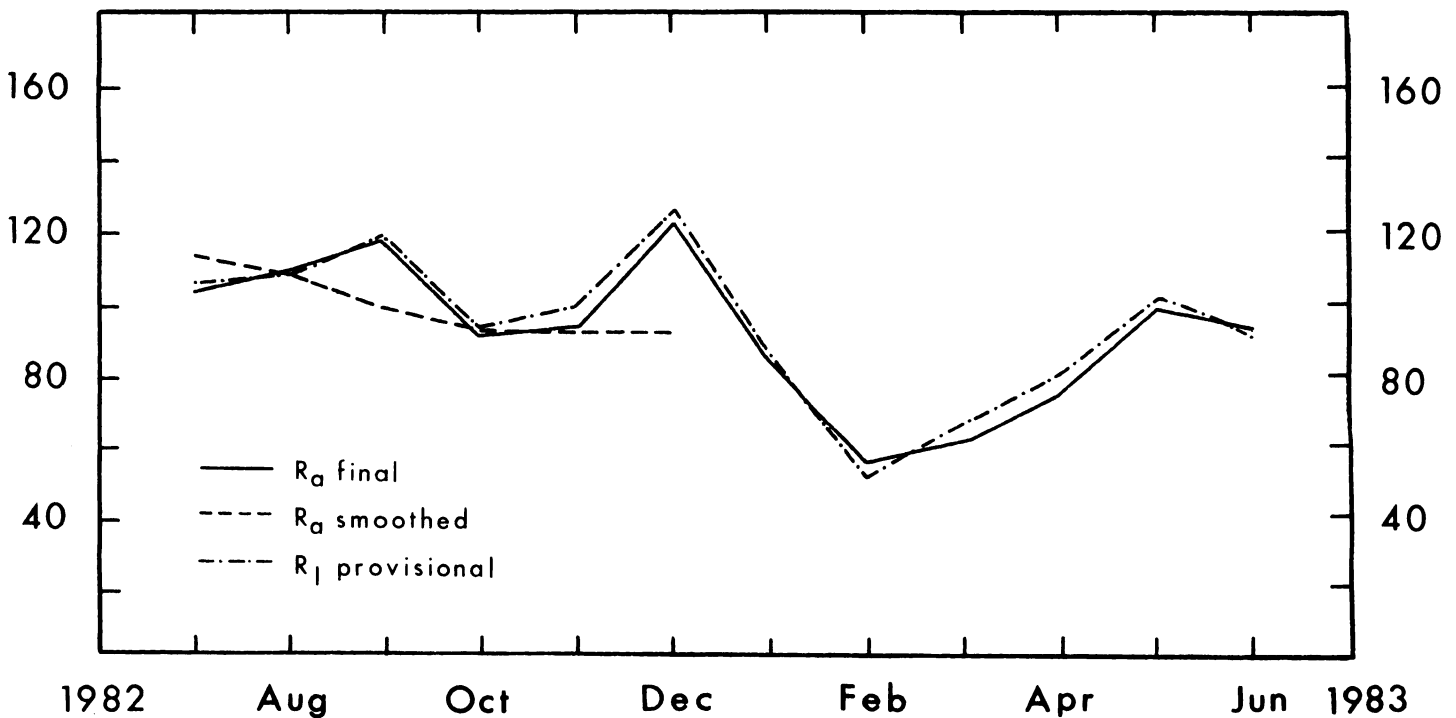
Mean = 93.1

Mean = 90.6

The smoothed mean American relative sunspot number (Waldmeier equation) is 92.4 for December 1982.

R_a final was computed from the reports of 29 members of the AAVSO international sunspot-observer network.

*Sunspot Bulletin, 1983, No. 6.



Sudden Ionospheric Disturbances Recorded During June 1983

Records were received from A1, 9, 19, 26, 28, 31, 46, 49, 50, 51, 54, 55, 56

Day	Max	Imp	Def	Observers	Day	Max	Imp	Def	Observers
1	01:21	1-	5	A31	8	13:08	1-	5	A1,26,49,50,54
1	02:51	1	5	A31	9	22:07	1	5	A19,26,31,46,55
1	05:00	1-	5	A55	10	13:37	1-	5	A1,19,26,31,50
1	13:56	1	5	A1,26,31,46,49,50	10	14:27	1-	5	A31,50
1	22:00	1-	5	A31,46,49	10	18:02	1	5	A1,19,26,31,46,50,55
2	15:33	1	5	A1,26,31,46,49,50,55	13	15:40	1-	4	A31
3	14:32	1-	5	A26,49,50	16	15:35	1+	5	A19,26,31,46,50,51,54,55
3	20:24	1-	5	A31	19	20:13	1	5	A1,9,19,31,55
4	02:29	1-	5	A46,55	19	20:45	1	5	A1,9,19,31,46,55
4	14:22	1-	5	A31	19	23:43	1-	5	A9,31,46,50,55
4	20:00	1+	5	A1,26,31,46,55	20	14:31	1	5	A1,19,26,31,49,50,54,55
5	12:09	1-	5	A1,51	21	02:08	1-	5	A31,55
5	15:33	1-	5	A19,31	21	16:04	1-	5	A19,31,50,55
5	15:52	1	5	A1,19,26,31,46,49,50,51,54,55	21	16:24	1	5	A1,19,26,31,50,55
5	17:14	1	5	A1,31,46,51,54,55	22	18:07	1	5	A19,31,55
5	18:00	1-	5	A1,19,31,46,54,55	22	18:47	1-	5	A19,31,55
5	19:45	1	5	A31,46	24	22:31	1	5	A31,49,50,55
5	23:14	1-	5	A31,55	25	11:35	1+	5	A1,49
6	03:15	1-	5	A31,55	25	19:04	2	5	A1,19,26,31,54,55
6	04:36	1-	5	A55	25	20:59	1+	5	A1,19,26,31,46,49,51,54,55
6	13:47	2	5	A1,26,31,49,51,54,55	26	04:41	1-	5	A55
6	17:48	1	5	A1,26,31,46,54,55	26	14:23	1	5	A1,31,50,51,55
6	21:35	1-	5	A31,49,55	28	01:33	1-	5	A55
7	17:35	1-	5	A31	28	20:54	1-	5	A46,55
7	19:15	1-	5	A31,55	29	19:14	1-	5	A9,31,55
7	20:45	1-	5	A26,31,46,49,54,55	29	22:44	2	5	A9,26,31,49,50,55
7	21:06	1+	5	A26,31,46,49,54,55	29	23:48	1-	5	A31,55
7	22:39	1-	5	A31	30	18:20	1-	5	A26,31,55

* * * * *